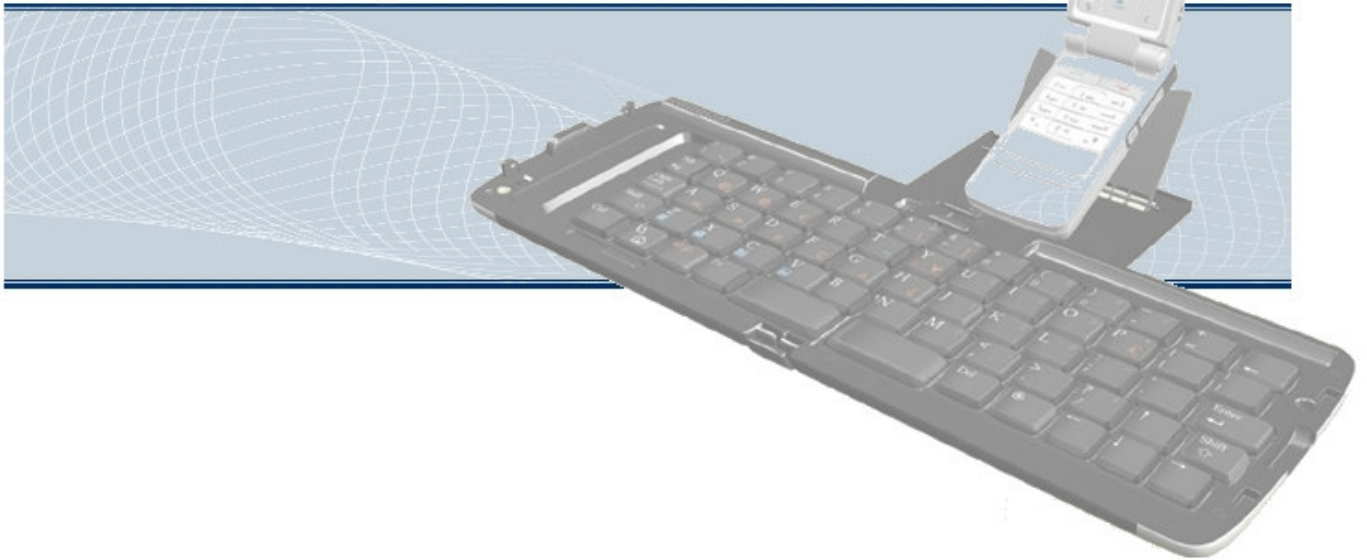


Bluetooth Keyboard



Support:

Microsoft Pocket PC 2003

Acer n30	HP iPAQ h5550	O2 Xda IIs
Dopod 700	HP iPAQ RX3417	Dell Axim X30
HP iPAQ h1940	HP iPAQ RX3715	Dell Axim X50
HP iPAQ h2210	HP iPAQ hx2750	i-MATE Pocket PC
HP iPAQ h2215	HP iPAQ hx4700	i-MATE JAM

Microsoft Pocket PC Phone Edition

Dopod 818	T-Mobile MDA3
Dopod 699	T-Mobile MDA COMPACT
O2 Xda II	E-TEN M500
O2 Xda II min	ASUS P505
T-Mobile MDA2	HP iPAQ h6365

Manufacturer's Disclaimer Statement

The information in this document is subject to change without notice and does not represent a commitment on the part of the vendor. No warranty or representation, either expressed or implied, is made with respect to the quality, accuracy or fitness for any particular purpose of this document. The manufacturer reserves the right to make changes to the content of this document and/or the products associated with it at any time without obligation to notify any person or organization of such changes. In no event will the manufacturer be liable for direct, indirect, special, incidental or consequential damages arising out of the use or inability to use this product or documentation, even if advised of the possibility of such damages. This document contains materials protected by copyright. All rights are reserved. No part of this manual may be reproduced or transmitted in any form, by any means or for any purpose without expressed written consent of its authors. Product names appearing in this document are mentioned for identification purposes only. All trademarks, product names or brand names appearing in this document are registered property of their respective owner.

Table of Contents

◆ Introduction of Bluetooth Keyboard	4
➤ Keyboard Features	4
➤ Keyboard Setting Up	5
◆ Driver Installation / Upgrading / Removing	6
➤ System Requirements	6
➤ Before to Use	6
➤ How to Install/Upgrade/ Remove the Bluetooth keyboard Driver	6
◆ Configuring Bluetooth Keyboard	9
◆ The Illustration of “Config” Page	10
➤ Active Keyboard	10
➤ Reconnection	11
➤ Typing Repeat Rate	11
➤ Typing Repeat Delay	11
➤ Keyboard Test	12
◆ The Illustration of “Function” Page	12
◆ The Illustration of “About” Page	13
◆ Function key and the Combination keys	13
➤ Launching Applications	13
➤ Editing Text Command	14
➤ Other Function Key	14
➤ Symbol Characters	15
➤ Latin Characters	15
➤ Special Shortcut Key	16
➤ Calculator Functions	17
◆ Bluetooth Keyboard Status LED	18
◆ Product Specifications	18
◆ Appendix A: Troubleshooting	19
◆ Appendix B: Look up the version of Bluetooth Stack	20

Introduction of Bluetooth Keyboard

➤ Keyboard Features

Welcome use the

Bluetooth Keyboard

Cradle :

The SmartPhone & PDA
cradle of the keyboard

Battery Cover :

Allow to place
two AAA battery
in it.

Keyboard lock :

The lock is able to
fix the keyboard in
unfolding position.

Power & the LED signal :

Power turn upward :
Power on
Power turn downward :
Power off

Slide shaft :

Pull in the right direction
to leave keypad no gap
for typing.

Cradle Lock :

Please unlock the lock
when you are folding
your cradle.

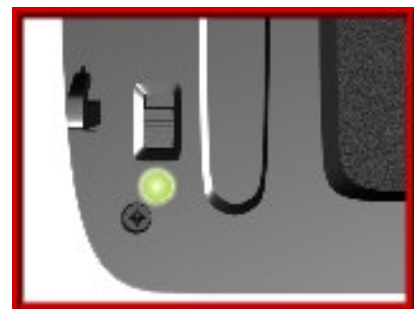


➤ Keyboard Setting Up



Notes:

- * Please turn the keyboard on first.
- * Once the LED flash orange light or no light, change the battery.



- * Before folding the keyboard, make sure the keyboard is unlock and the cradle is inserted back into the keyboard.

Driver Installation/Upgrading/Remove

➤ **System Requirements**

- Microsoft Pocket PC 2003 with built-in Bluetooth.
- At least 420 KB of free memory on your Pocket PC.
- A computer with the Microsoft Windows 2000/XP operating system.
- A synchronizing program on your computer, such as Microsoft ActiveSync 3.6 or higher, for copying files to your Pocket PC.

➤ **Before to Use**

- Check the batteries status of Bluetooth keyboard.
(Open the switch to check the green light on the keyboard.)
- Disable other previously installed keyboard application which will use Bluetooth on your Pocket PC.

➤ **How to Install / Upgrade / Remove the Bluetooth keyboard Driver?**

■ **Installation**

- * Connect your Microsoft Pocket PC 2003 through infrared/cable for ActiveSync with the computer.
- * Insert LevelOne BLK-2000 CD into computer's CD-ROM drive.
- * Follow the instruction on screen to complete the installation.
- * After the Bluetooth keyboard driver is installed successfully and the Microsoft Pocket PC is reset, you can find this Bluetooth keyboard icon is showed on the Programs of the Pocket PC.
(Figure 1)

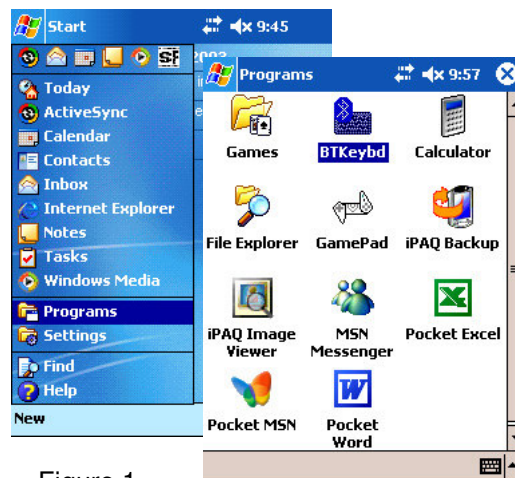


Figure 1

- * Insert BTKeybd Icon into Start Menus.
(Figure 1.1)

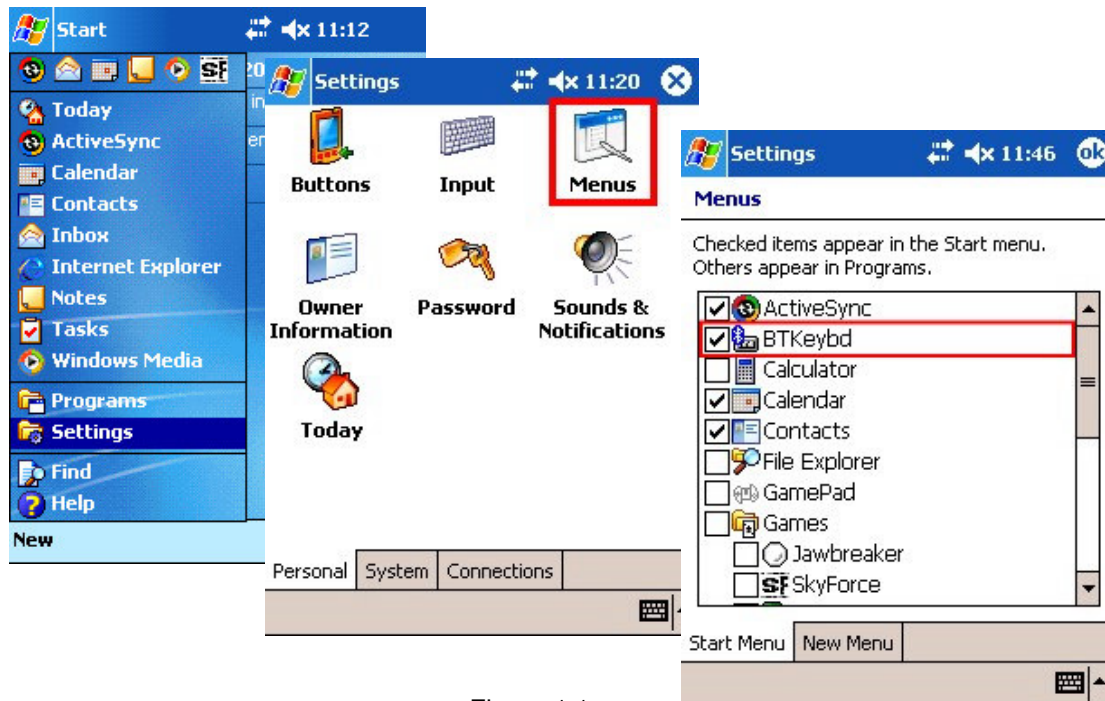


Figure 1.1

■ Upgrading

Please check the Agent's website from time to time to check if any new driver is released.

(**Note:** Please remove the old driver out first, and then install the last one into your device.)

■ Removing

Step 1 : Turn the driver off

Step 2 : Tap Start -> Settings -> System -> Remove Programs, (Figure 2) choose "Bluetooth Keyboard" and click the **Remove** button. (Figure 3)

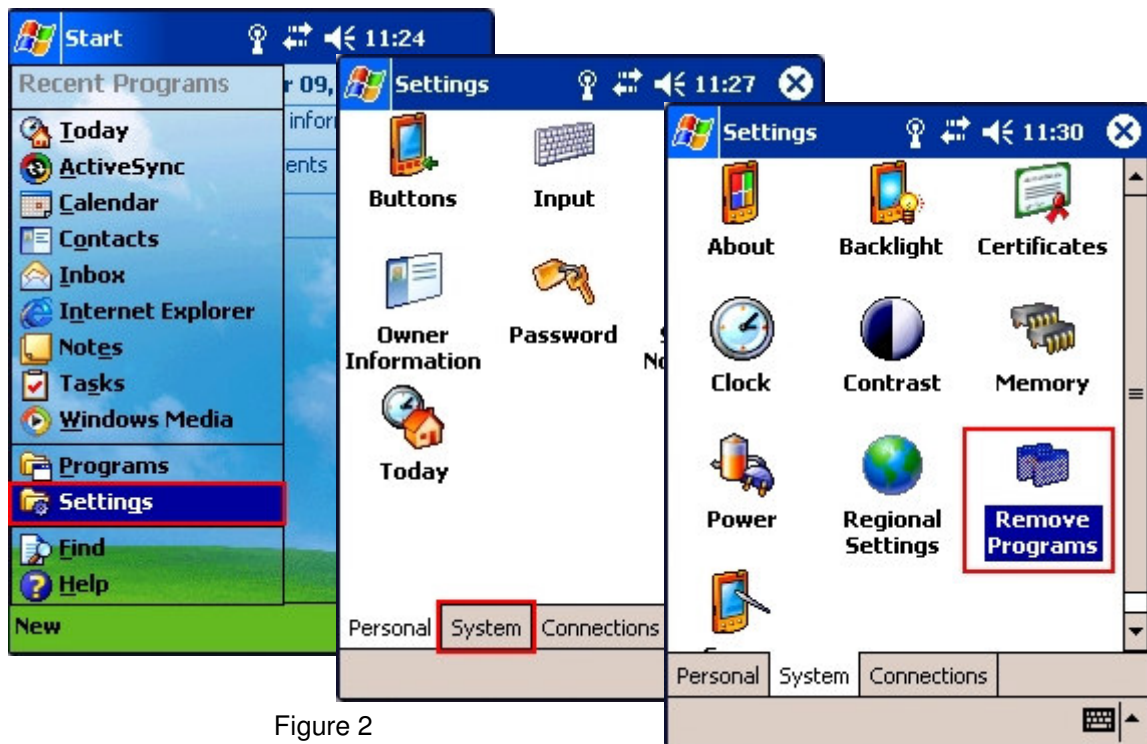


Figure 2

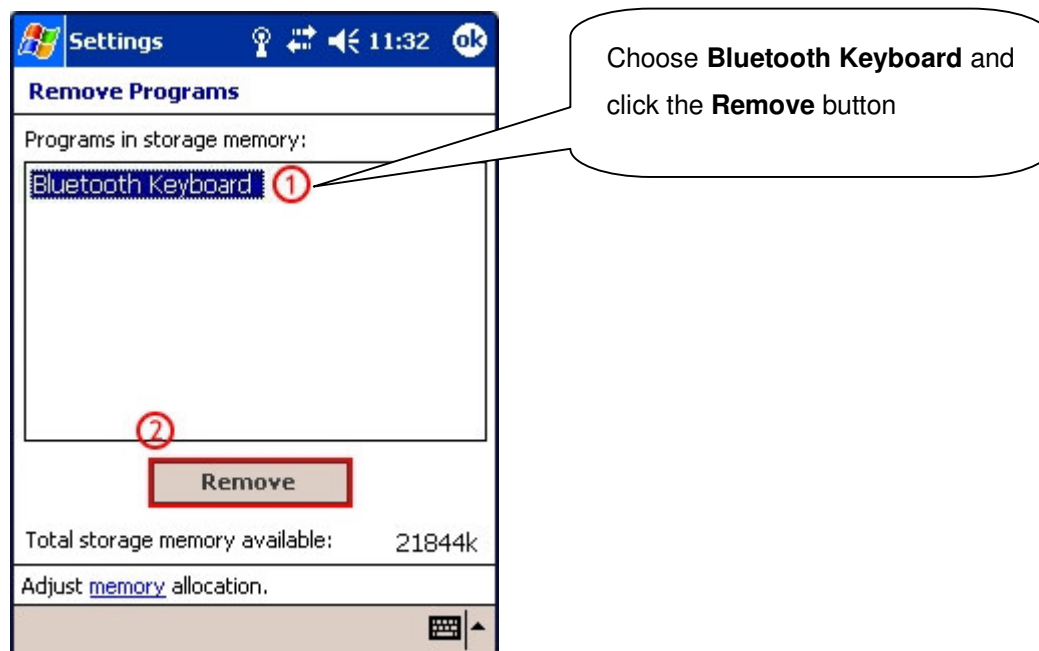
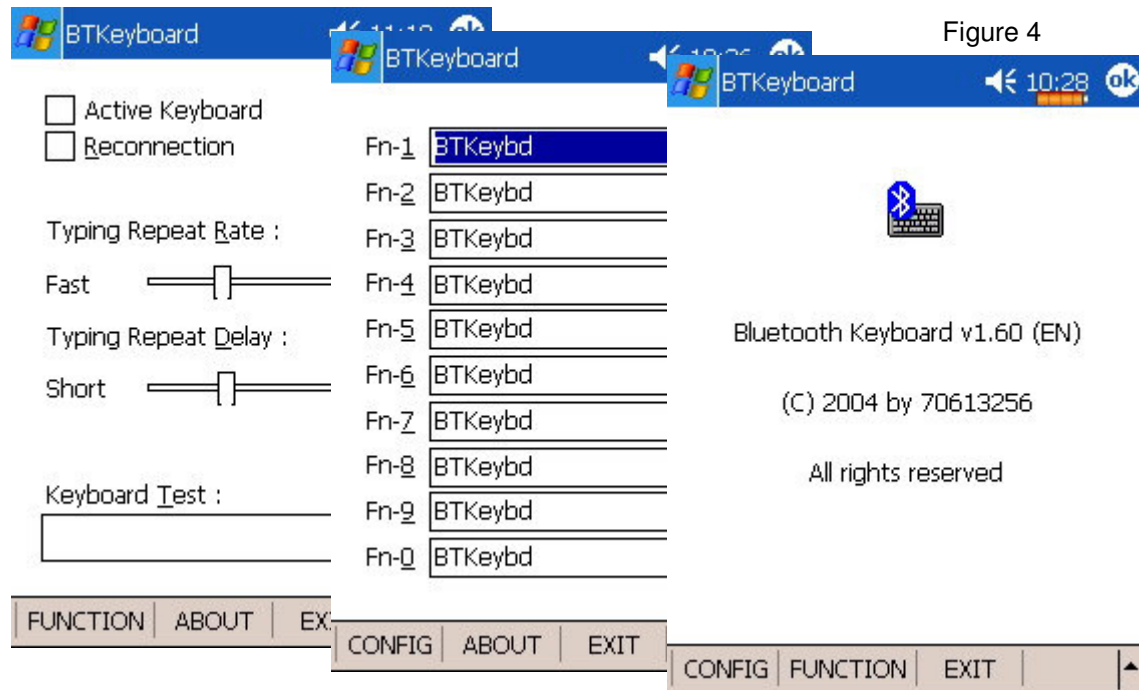


Figure 3

Configuring Bluetooth Keyboard

- When you click the “BTkeybd” icon, you will see three pages “Config”, “Function”, “About”. (Figure 4)



- **“Config” Page :**
There are including:
“Active keyboard”, “Reconnection”, “Typing Repeat Rate”, “Typing Repeat Delay”, “Keyboard Test”.
- **“Function” Page :**
This page provides ten user-definable function keys as **Hot Keys**.
- **“About” Page :**
Provides the version of the driver installed in your handheld device.

The Illustration of “Config” Page

- **Active Keyboard**
- **How to connect the Bluetooth keyboard with your device??**

Step 1:

Turn the Bluetooth keyboard on, the LED will flash orange for 1 second, then turn to flash green once every other second, the Bluetooth keyboard is in Discovery mode.

Step 2:

Tap Start -> **BTKeybd**. (Figure 5)

Step3:

Click "**Active Keyboard**".

Pocket PC will search and connect the Bluetooth Keyboard automatically (Figure 6)



Figure 5

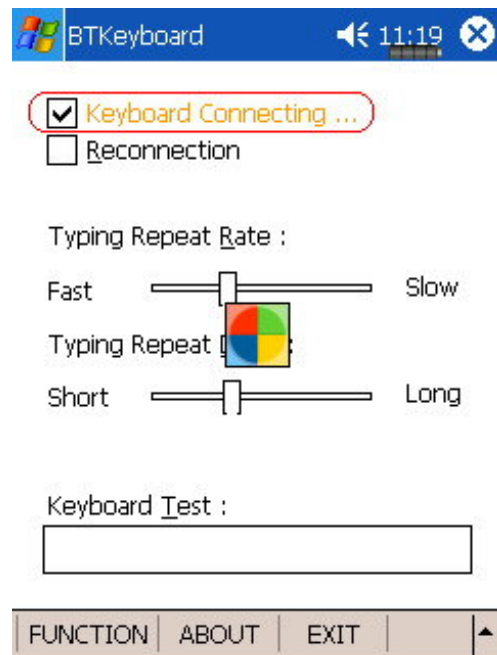


Figure 6

➤ Reconnection

After the connection established successfully, then you can turn “**Reconnection**” to “**On**”. This function allows the Bluetooth keyboard memorizes the last connected device, and they will pair automatically in next connection without further search.
(Figure 7)

Note: Please do not turn “**Reconnection**” on before the first connection established.

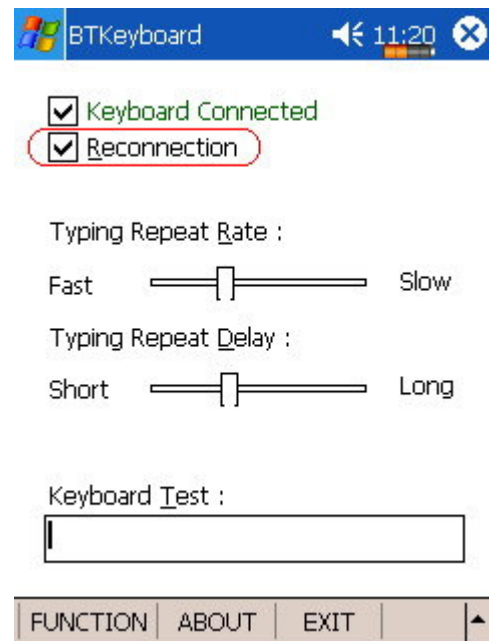


Figure 7

➤ Typing Repeat Rate

This option allows you to set the speed at which a letter, number or other character repeats when you press and hold a key. Use your stylus to drag the marker arrow toward **Fast** (to increase) or **Slow** (to decrease) the repeat rate. (Figure 8)

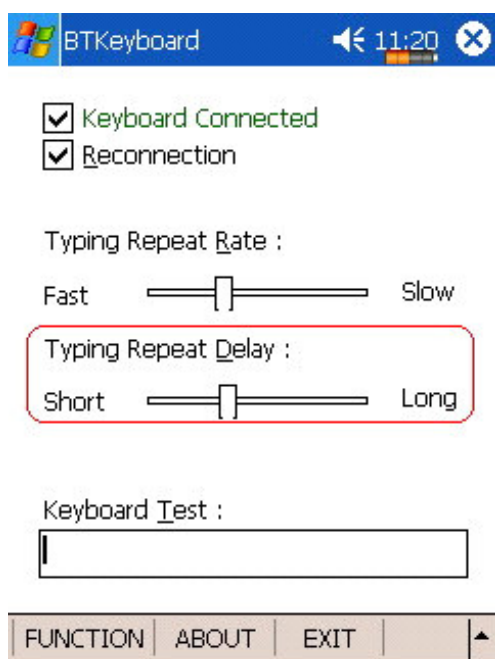
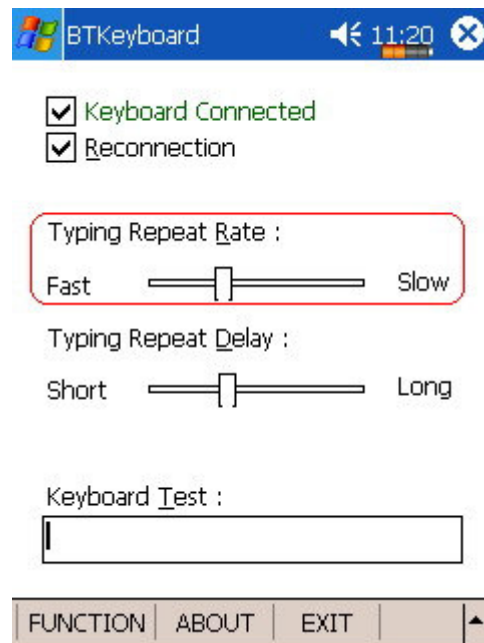


Figure 9

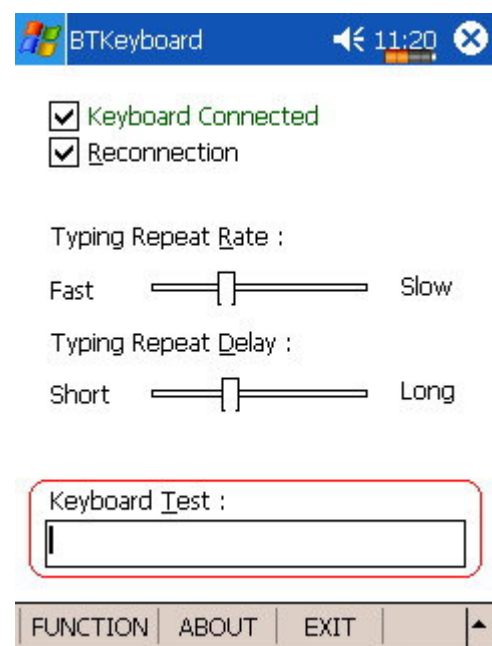
➤ Keyboard Test

Test the repeat rate and delay by holding down a letter or number key on the Bluetooth keyboard. The character appears according to the setting you have chosen. Change and test these settings until you achieve the desired outcome. (Figure 10)



➤ Typing Repeat Delay

This option allows you to set the length of time before a letter, number or other character begins to repeat when you press and hold a key. Use your stylus to drag the marker arrow toward **Long** (to increase) or **Short** (to decrease) the length of the delay. (Figure 9)



The Illustration of “Function” Page

- **How to set function keys for your Bluetooth keyboard?**

You should be able to set 10 different function keys (Fn -1, Fn -2 ~ Fn -0).

Please use the [Fn] key to combine with the number [0] ~ [9] to activate the function key. (Figure 11)

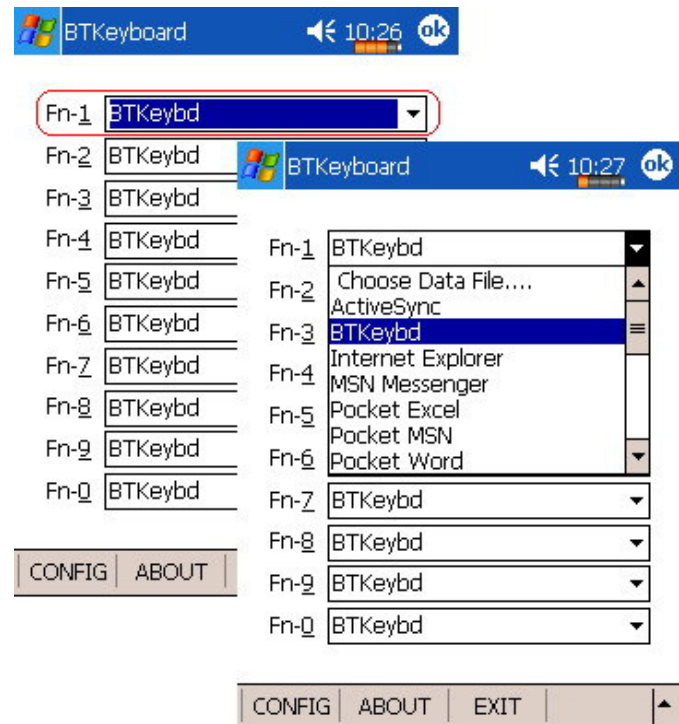


Figure 11

The Illustration of “About” Page

- **How to check the version of driver?**

Please click “**About**” page. (Figure 12)

Driver version: V1.60

English	Version	EN
French	Version	FR
German	Version	DE





Figure 12

Function key and the Combination keys

- **Launching Applications :**

Launch the application by shortcut.

Function	Keystroke
Launches a specific user-defined application.	[Fn] + [Number]
Launches Today	
Launches Start Menu	[Fn] + []
Launches “Inbox” application	[Fn] + [Z]
Launches “Contacts” application	[Fn] + [X]
Launches “Tasks” application.	[Fn] + [C]
Launches “Calendar” application	[Fn] + [V]
Launches “Notes” application	[Fn] + [B]
Launches “Word” application.	[Fn] + [N]
Launches “Excel” application	[Fn] + [M]

➤ **Editing Text Command :**

This table lists the key combinations to activate various commands.

Function	Keystroke
Moves cursor left one word	[Ctrl] + [⬅]
Moves cursor right one word	[Ctrl] + [➡]
Selects previous word	[Ctrl] + [Shift] + [⬅]
Selects next word	[Ctrl] + [Shift] + [➡]
Selects the previous character	[Shift] + [⬅]
Selects the next character	[Shift] + [➡]
Selects pervious line	[Shift] + [⬆]
Selects next line	[Shift] + [⬇]
Beginning of the line	[Fn] + [⬅]
End of the line	[Fn] + [➡]
Page Up	[Fn] + [⬆]
Page Down	[Fn] + [⬇]
Select all	[Ctrl] + [A]
Undo last action	[Ctrl] + [Z]
Cuts selected text	[Ctrl] + [X]
Copies selected text	[Ctrl] + [C]
Pastes cut or copied text	[Ctrl] + [V]

➤ **Other Function Key :**

Function	Keystroke
All keys embedded with gray characters are accessible by enabling the Num Lock setting. Enabling Num Lock emulates a 10-key keypad interface found on most standard keyboards.	[Fn] + [Caps Lock]
Insert a tab	[Tab]
Generate an ESC	[Fn] + [Tab]
Show/Hide the input method	[Fn] + [Space]

➤ **Symbol Character :**

International Character Key

Keystroke	Character
[Alt gr] + [1]	~
[Alt gr] + [4]	`
[Alt gr] + [6]	\
[Alt gr] + [7]	
[Alt gr] + [Q]	®
[Alt gr] + [W]	©
[Alt gr] + [E]	€
[Alt gr] + [Y]	¥
[Alt gr] + [P]	£
[Alt gr] + [A]	«
[Alt gr] + [S]	»
[Alt gr] + [D]	μ
[Alt gr] + [F]	Ç
[Alt gr] + [G]	ñ
[Alt gr] + [H]	¿

Latin Characters

How to input Latin Character?

Press **[Fn] + [Ctrl]** at the same time, the Bluetooth keyboard is in Latin mode. This table lists

keystrokes to activate Latin functions.

Keystroke	Character
Q	á
W	à
E	ã
R	â
T	å
Y	ä
U	æ
I	ç
Keystroke	Character
O	ñ
P	ø
A	é
S	è
D	ë
F	ê
G	í
H	ì
J	ï
K	î
L	ß
;	ý
‘	ÿ
Z	ó
X	ò
C	ö
V	ô
B	õ
N	ú
M	ù
,	ü
.	û
/	¿

➤ **Special Shortcut Key :**

This function supports to dial or hang up if your device include phone function.

Function	Keystroke
Dial	[Ctrl] + [T]
Hang up	[Ctrl] + [Y]

➤ **Calculator Functions :**

Press **[Fn] + [Caps Lock]** at the same time, the Bluetooth keyboard is in NumLock mode.

This table lists keystrokes to activate calculator functions.

keystroke	Action
/	(+) Add
;	(-) Subtract
P	(*) Multiply
-	(/) Divide
=	(=) Equals
J	(1) One
K	(2) Two
L	(3) Three
U	(4) Four
I	(5) Five
O	(6) Six
8	(7) Seven
9	(8) Eight
0	(9) Nine
M	(0) Zero
C	Clear all
E / Backspace	Clear last entry
H	Clear memory
Y	Set current number on display in memory
R	Recall value in memory
,	comma
.	decimal point

Bluetooth Keyboard Status LED

When the Bluetooth keyboard is open, you can find a LED on your left side keyboard. This LED can indicate the status of the keyboard and battery

- ★ When the LED flashes **green** light once every other second, this is the state that the Bluetooth keyboard can be detected by handheld device.
- ★ When the LED flashes **green** light twice every other second, this is the status that the Bluetooth keyboard is connected by handheld device.
- ★ When the LED flashes **orange** light once or twice every other second, this is the batteries are in low level. You should change the batteries immediately.

Product Specifications

Item		Typ.	Unit
Module Size (Close)	Horizontal (H)	143	mm
	Vertical (V)	95	mm
	Depth (D)	19	mm
Module Size (Open)	Horizontal (H)	279	mm
	Vertical (V)	95	mm
	Depth (D)	13	mm
Weight	Net	200	g

Absolute Maximum Rating

Item	Min	Max	Unit	Note
Operation Temperature	-10	50	℃	Humidity Condition = 5 ~ 90%RH
Storage Environmental	-30	70	℃	Humidity Condition = 5 ~ 90%RH

Appendix A: Troubleshooting

1. How do I verify my WinCE Operation System version?

- Go “Start → Settings”.
- Select “System” middle down your screen.
- Click “About”.
- Select “Version” left bottom of your screen.
- You can see WinCE OS software version here.

2. I am not able to install Bluetooth keyboard driver to my Pocket PC?

- Please ensure the connection cable is connected between PC and Pocket PC.
- Please check Microsoft “ActiveSync” software is right down on your system tray.
- Click “Start → ActiveSync” on your Pocket PC”
- To synchronize Pocket PC and PC to ensure connection is fine. (If you did fail to connect with your PC, please check the connection between Pocket PC and PC first.)
- Follow Bluetooth keyboard user guide to repeat installation.

3. Why Pocket PC has no response when I type on Bluetooth keyboard?

- Make sure the keyboard is in the connected status by LED flash time.
- Check the battery of mobile device is charged.
- Check the batteries of Bluetooth keyboard have enough power by LED color.

4. Why couldn't I remove the Bluetooth keyboard driver from my device?

- Please check if the Bluetooth keyboard still in the link mode or not. If the keyboard still connected with your device, please close the application from your device and try again.

5. Why the message of “ ‘BTKeybd.exe’ will not found (or its Bluetooth component...)” is appeared when you press the “BTKeybd.exe”?

- That means the Bluetooth which inside your Pocket PC is not using the Widcomm Bluetooth Stack module. If the situation is happen on your device, please contact us for support.

Appendix B: Look up the version of Bluetooth Stack

Tap "Start → Settings → System (or Connections) → Bluetooth"

Choose the "About" page from the bottom of your Pocket PC, and you should be able to find the version of the Bluetooth Stack.

(**Note:** If you couldn't find the **Bluetooth** selection from the list, which means your Pocket PC is not able to support Widcomm Bluetooth Stack)

