



WAP-6221
N300 PoE Wireless Access Point, In-Wall
Mount, Controller Managed

User's Manual

Contents

Chapter 1 Equipment Instruction and Power Supply	4
1. PoE Power supply:	4
2. Operation Mode description and usage:	4
Chapter 2 Run and Login	6
Chapter 3 Operation mode setting	7
1. Router operation:	8
2. Repeater operation:	8
3. Wireless Coverage:	10
Chapter 4 System Tools and Advanced Settings:	12
1. System Tools	12
2. Wireless	13
3. Network Setting	14
4. Management	15
4.1 System.....	15
4.2 User	16
4.3 Logs.....	16
4.4 Upgrade Firmware	17
4.5 System Time	17
Appendix A LICENSE STATEMENT / GPL CODE STATEMENT	19

This quickly guider is for our 300Mbps in wall AP. It will instruct you how to configure and manage this Access Point/Router/Repeater in right ways.

Packing Contents:

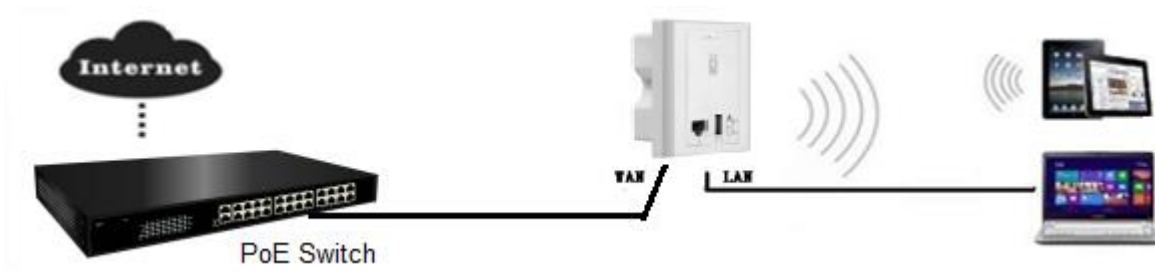
- 300Mbps in wall AP
- QIG
- Setting accessory

Chapter 1 Equipment Instruction and Power Supply

1. PoE Power supply :

There are two way to supply power for this device:

A. PoE Switch: pls make sure the PoE switch comply with IEEE 802.3af standard; then connect switch and in wall AP as follow:



P2 Power Supply



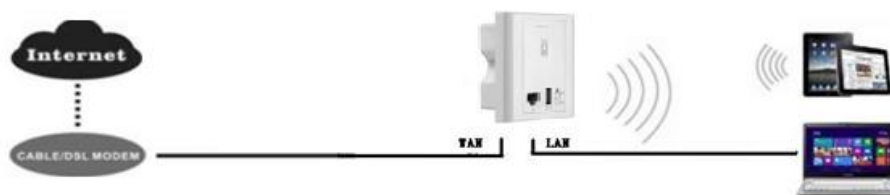
Attent

wrong connection may damage the device.

2. Operation Mode description and usage:

There are three operation mode in our in wall AP: Internet Settings, Wireless Repeater, Wireless Coverage

Internet Settings: WAN Connection, from cable internet to Wifi internet by setup PPPoE, Dynamic IP, Static IP or PPTP in Internet Settings



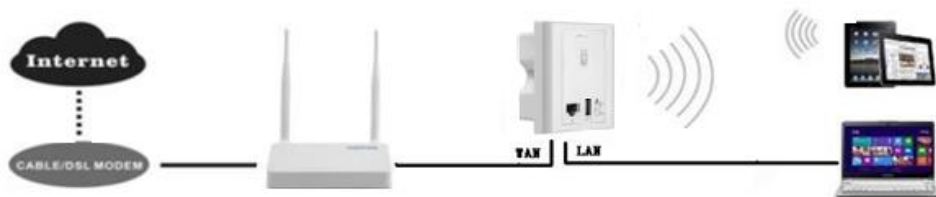
P3 Internet Setting

Wireless Repeater: The in wall AP can bridge and extend the existing WiFi signal in this operation mode, for example: this in wall AP bridge and extend the existing Wifi Signal from router, then PC will connect with WiFi Repeater as follow:



P4 Wireless Repeater

Wireless Coverage Mode: LAN cable from Switch to in wall AP, then wired networking will change to Wireless network via Wireless Coverage mode. it suit for hotel, travel, business trip, home



P5 Wireless Coverage Operation mode

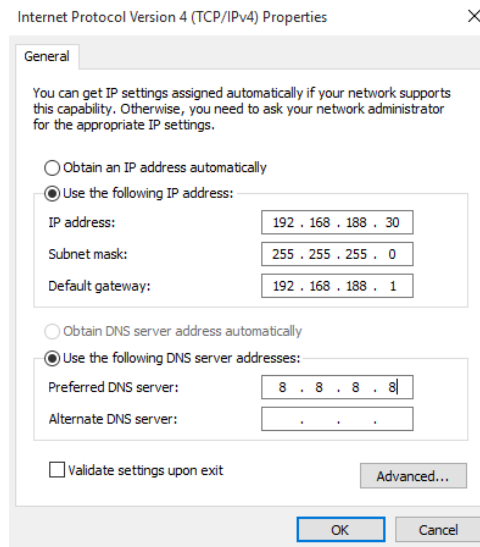
- **Description of LED Status:**

LED Status	Working Status
Flash fast	Networking connecting
Flash slow	Networking connection success
Flash off	Networking connection failure

Chapter 2 Run and Login

A. Power this in wall AP in right way

B. Set an IP address for your PC: configure local IP address as 192.168.188.X(X can be selected from 2-254), the same network segment as this access point, subnet mask is 255.255.255.0

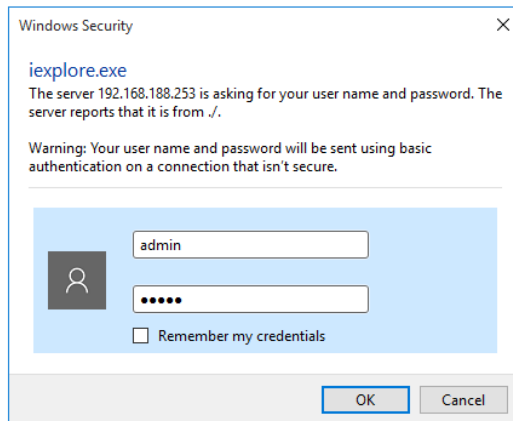


P6 IP Address configure

C. Connect in wall AP with PC by LAN Cable or Wireless

Pls note, if connect in wall with PC by wireless, then the default SSID is Levelone 2.4G, default passwords are 66666666.

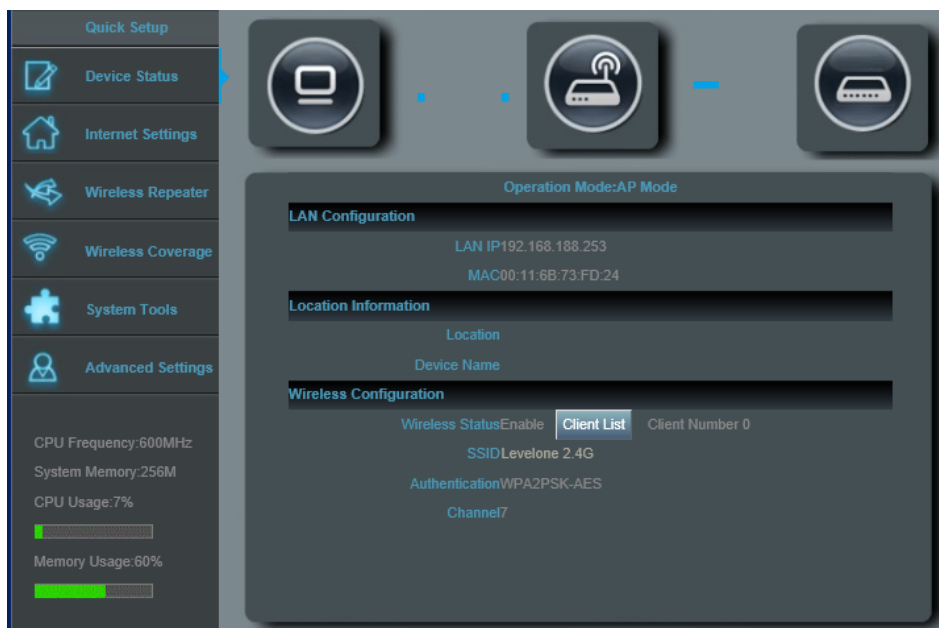
D. Log in: type 192.168.188.253 in your IE, will pop up following picture, pls input **admin/admin** in User name/Password to Log into this in wall AP



P7 Login


Chapter 3 Operation mode setting

Log into 192.168.188.253 in your Internet Explorer and input user name/Passwords, following device status will be showed, then you can set this in wall AP as Router/Repeater/AP from Quick Setup:



P8 Device Status

Pls note, if signal strength  is blue, mean work fine,

if signal strength  is red, there is some connection problem.

1. Router operation:

Click Internet Settings, then will see following page, pls choose dynamic IP or PPPOE, then input the user name, passwords in PPPOE part, after that can change the SSID, Channel, Key as you like, then apply.



P9 Internet Setting

2. Repeater operation:

Click Wireless Repeater, then will see following page:



P10 Wireless Repeater

Then scan AP, choose AP, input AP's passwords to finish the connection setting.



P11 Scan AP

If you want to change this device's SSID, channel, Key, then set it from Wireless Part. After that, then apply.



P12 Internet Setting

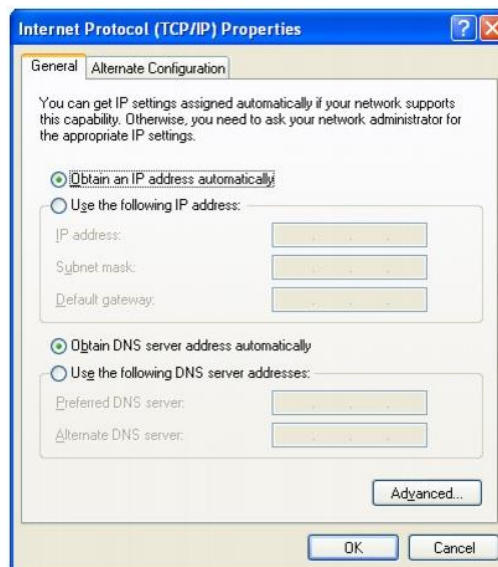
3. Wireless Coverage:

click wireless coverage, then will appear following page, change the SSID, Key, Channel as you like, then apply.



P13 Wireless Coverage

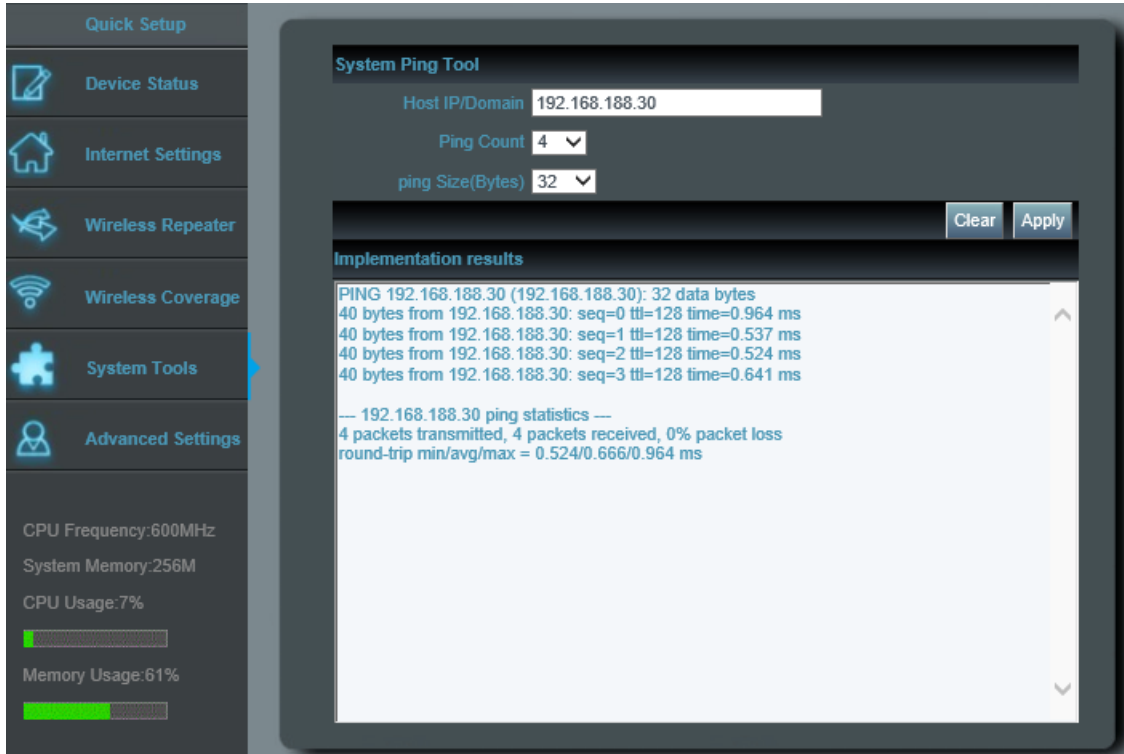
After finish the setting, then cancel the IP address you setted for your PC, then the internet setting is finished.



P14 Obtain IP address automatically

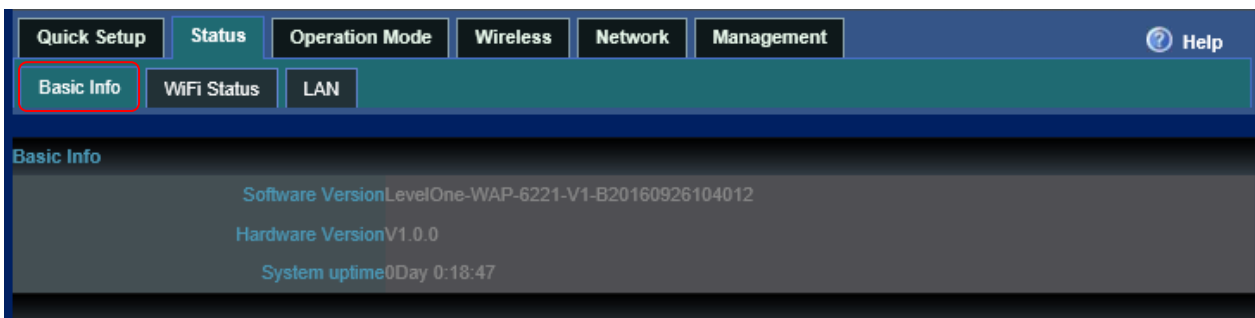
Chapter 4 System Tools and Advanced Settings:

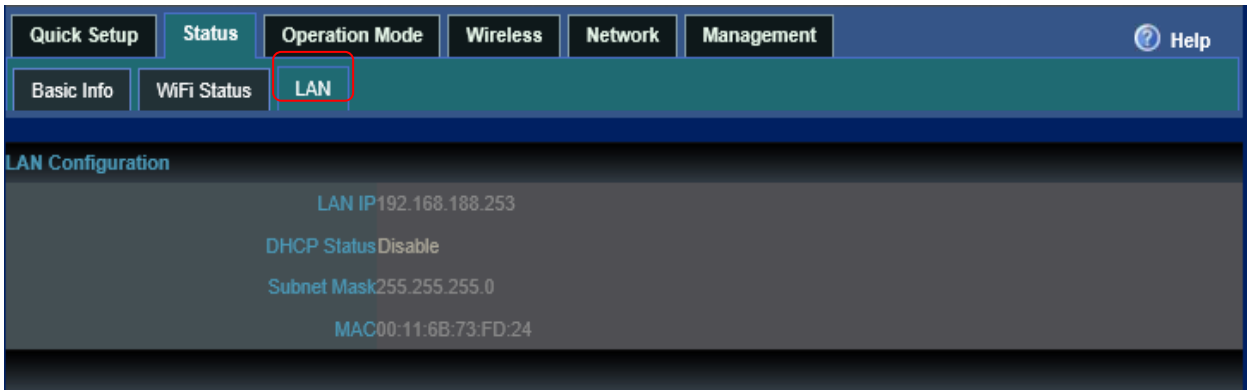
1. System Tools



P15 System Tools

In system tools, you can ping any IP address/Domain easy to check the AP's working status.



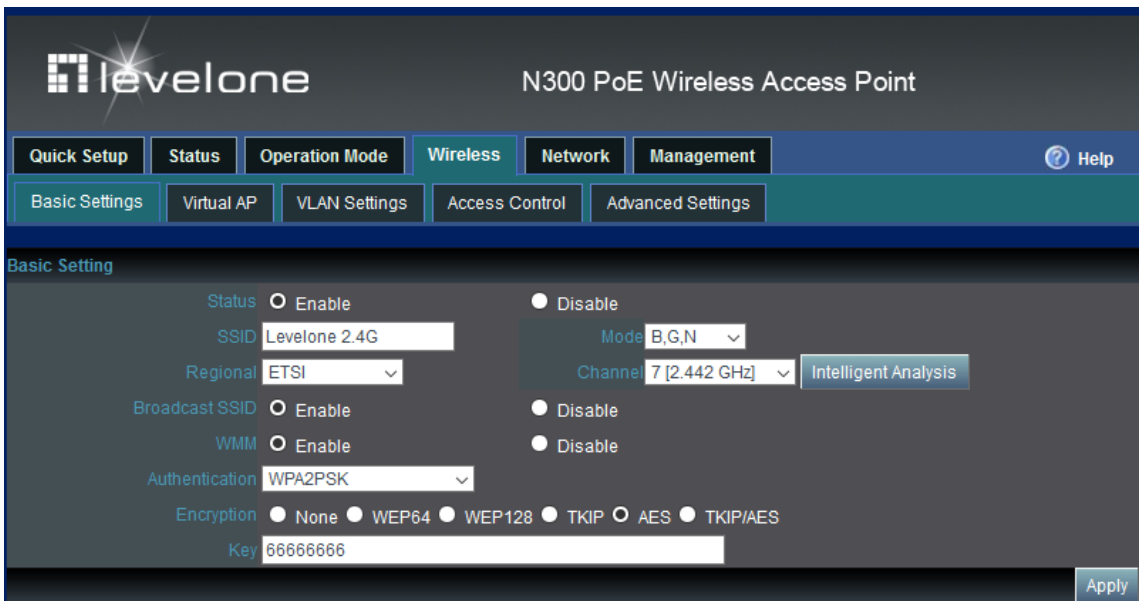


P16 Advanced Setting

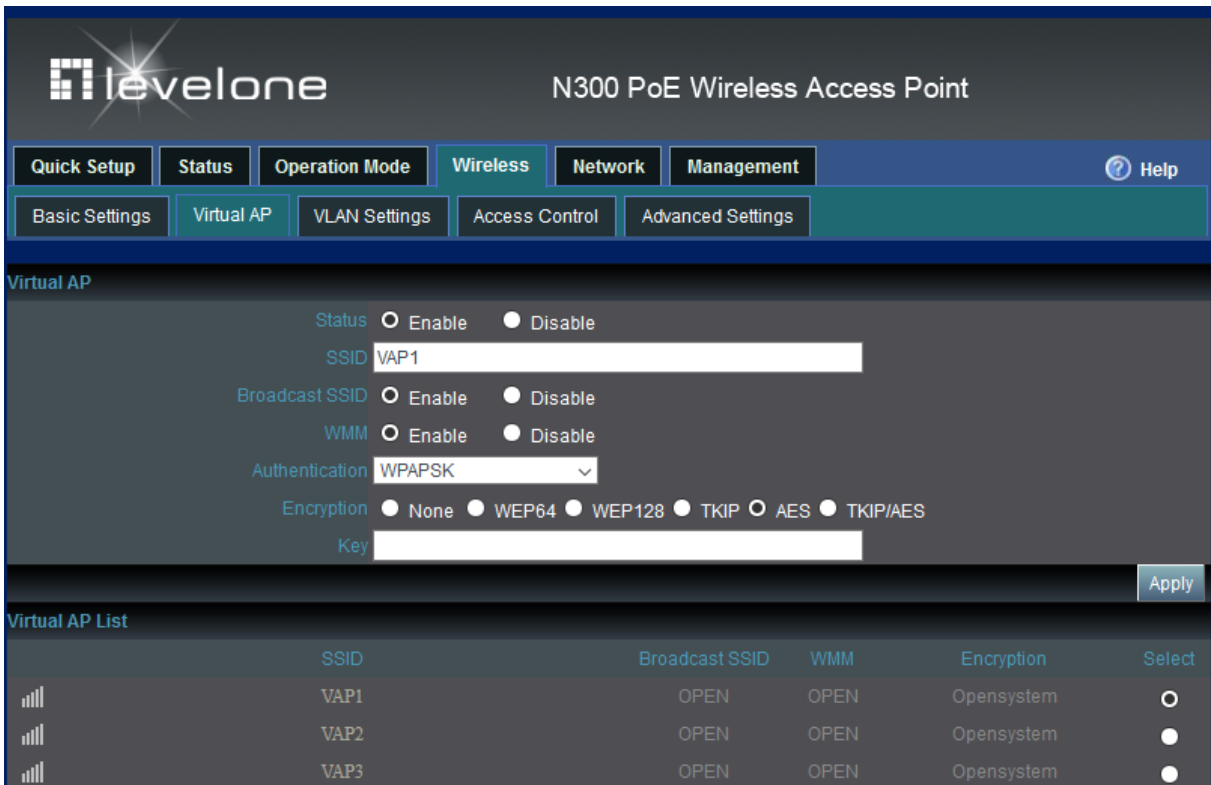
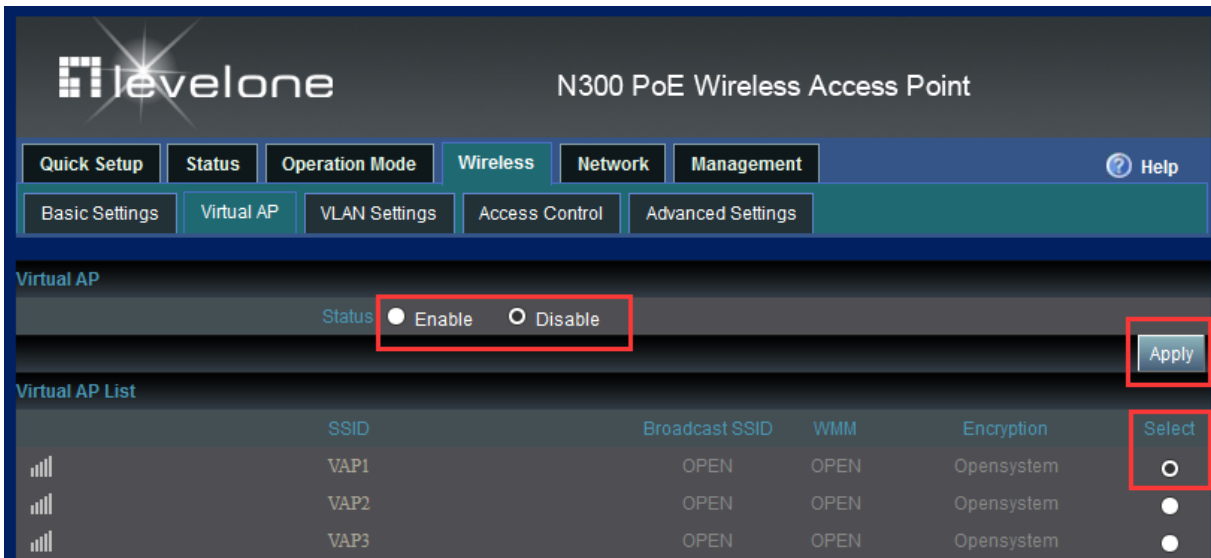
In Advanced Setting, you can set operation mode, SSID, IP address setting, Channel setting, management and firmware upgrade, let's show how to upgrade firmware and revert to default.

2. Wireless

In basic setting, you can change the SSID, Region, mode and decide the encryption type and key to SSID. Intelligent analysis can help you to choose the best channel.



In Virtual AP, you are allowed to use three virtual ap. Please select the SSID first and then enable it. For instance, i would like to use the VAP1, I should select VAP1 as below and then enable it. After being enabled, you can configure the details of the AP. After configuration, please apply them.



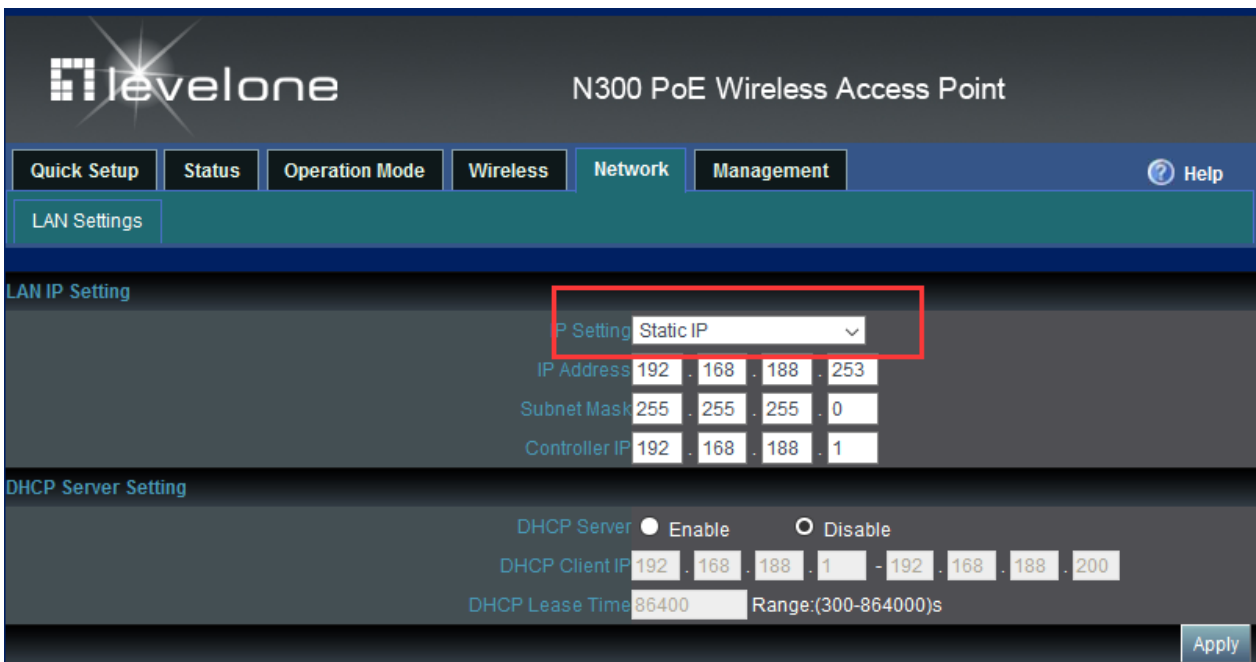
3. Network Setting

In this page, users can set up the basic LAN setting

Under AP Mode, DHCP from Controller means you are allowing the controller to control the IP of the AP(originally 192.168.188.253) . Therefore the controller can find and manage the AP.



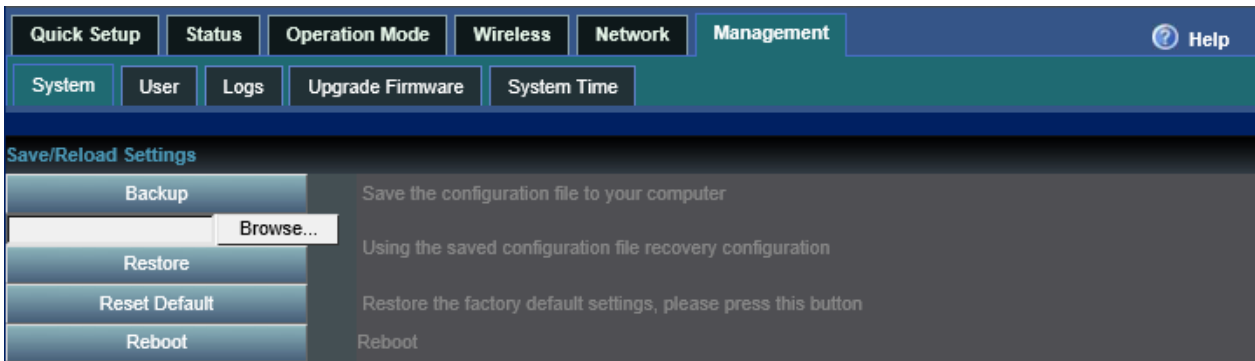
When you choose Fixed IP, that means the AP is having the right to decide its own IP instead of being totally controlled by controller. However, when the IP Address is in the same network segment as controller's, can the controller find and manage the AP. Take one for example, when controller's IP is 192.168.10.1, and only when AP's IP is 192.168.10.X can the controller find and manage the AP.



4. Management

4.1 System

Press the WPS/Reset button until the LED light off. Click Reset Default from System.



P18 Reset Default

Backup function allows you to save the current configuration to your PC. Restore helps you to apply your configuration you saved before in your PC. Reset Default and Reboot the device just with one click.

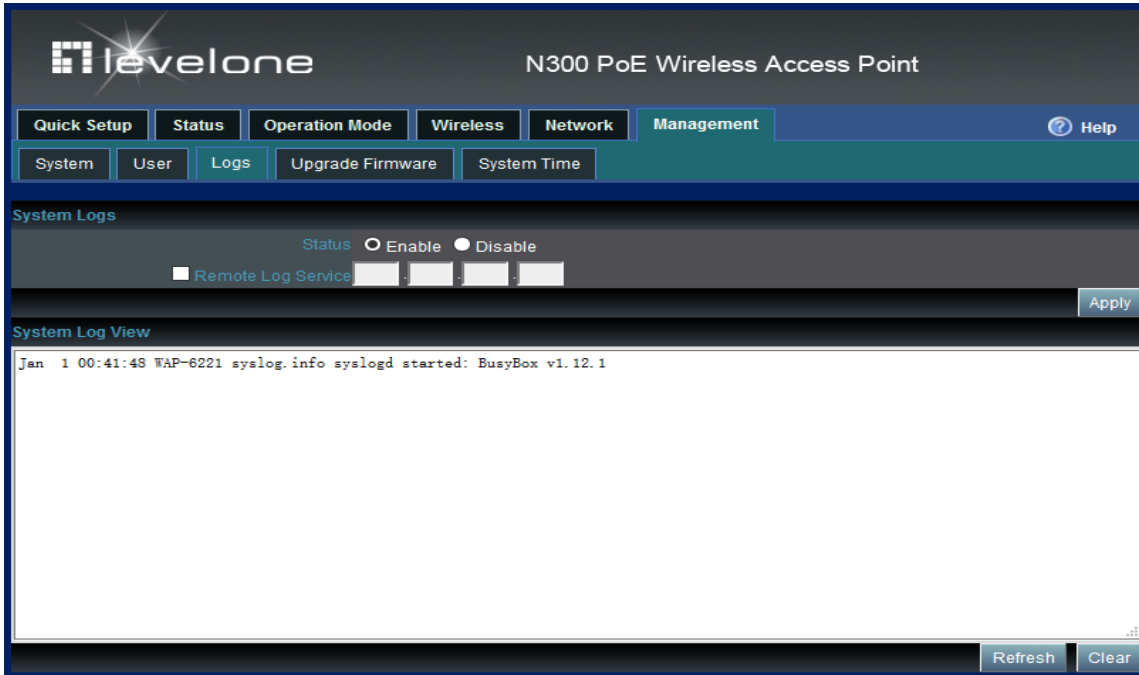
4.2 User

Change the user name and password for Log in



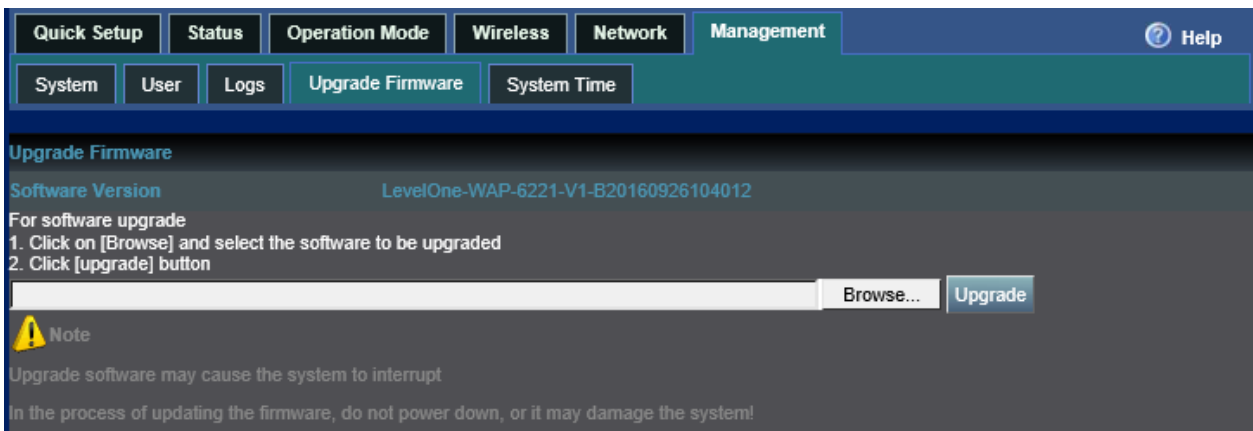
4.3 Logs

Logs helps to record the running history of the device which will help you a lot when you have trouble with this device. You can copy the logs and send it to consult your engineers.



4.4 Upgrade Firmware

Browse and choose the firmware should upgrade from above picture, then click upgrade. After that click Reset Default from System to finish firmware upgrade



P17 Firmware upgrade

4.5 System Time

In this part, you can set the time of the device. NTP server can only work under Gateway mode. When NTP server is chosen, Sync with host will be unavailable. When it connects with controller click Sync with Host, it will get time from controller rather than from PC.

When device running at xx:xx will reboot the device automatically at xx:xx.



N300 PoE Wireless Access Point

Quick Setup

Status

Operation Mode

Wireless

Network

Management

Help

System

User

Logs

Upgrade Firmware

System Time

System Time

System Time 2014-01-01 00:49:09

Synchronization with the host

When device running at 0:00 Automatic reboot

Apply

Appendix A LICENSE STATEMENT / GPL CODE STATEMENT

This product resp. the here

(<http://global.level1.com/downloads.php?action=init>) for

downloading offered software includes software code developed

by third parties, including software code subject to the GNU

General Public License Version 2 (“GPLv2”) and GNU Lesser

General Public License 2.1 („LGPLv2.1“).

WRITTEN OFFER FOR GPL/LGPL SOURCE CODE

We will provide everyone upon request the applicable GPLv2 and

LGPLv2.1 source code files via CDROM or similar storage

medium for a nominal cost to cover shipping and media charges

as allowed under the GPLv2 and LGPLv2.1. This offer is valid for 3

years. GPLv2 and LGPLv2 inquiries: Please direct all GPL and

LGPL inquiries to the following address:

Digital Data Communications GmbH

Zeche-Norm-Str. 25

44319 Dortmund

Deutschland

Phone: [+49 231 9075 - 0](tel:+4923190750)

Fax: [+49 231 9075 - 184](tel:+492319075184)

Email: support@level1.com

Web: www.level1.com

NO WARRANTY

This program is distributed in the hope that it will be useful, but WITHOUT ANY WARRANTY; without even the implied warranty of MERCHANTABILITY or FITNESS FOR A PARTICULAR PURPOSE. See the GNU General Public License for more details. IN NO EVENT UNLESS REQUIRED BY APPLICABLE LAW OR AGREED TO IN WRITING WILL ANY COPYRIGHT HOLDER, OR ANY OTHER PARTY WHO MAY MODIFY AND/OR REDISTRIBUTE THE PROGRAM AS PERMITTED ABOVE, BE LIABLE TO YOU FOR DAMAGES, INCLUDING ANY GENERAL, SPECIAL, INCIDENTAL OR CONSEQUENTIAL DAMAGES ARISING OUT OF THE USE OR INABILITY TO USE THE PROGRAM (INCLUDING BUT NOT LIMITED TO LOSS OF DATA OR DATA BEING RENDERED INACCURATE OR LOSSES SUSTAINED BY YOU OR THIRD PARTIES OR A FAILURE OF THE PROGRAM TO OPERATE WITH ANY OTHER PROGRAMS), EVEN IF SUCH HOLDER OR OTHER PARTY HAS BEEN ADVISED OF THE POSSIBILITY OF SUCH DAMAGES.

GNU GENERAL PUBLIC LICENSE

Version 2, June 1991

Copyright (C) 1989, 1991 Free Software Foundation, Inc.
51 Franklin Street, Fifth Floor, Boston, MA 02110-1301, USA

Everyone is permitted to copy and distribute verbatim copies of this license document, but changing it is not allowed.

Preamble

The licenses for most software are designed to take away your freedom to share and change it. By contrast, the GNU General Public License is intended to guarantee your freedom to share and change free software--to make sure the software is free for all its users. This General Public License applies to most of the Free Software Foundation's software and to any other program whose authors commit to using it. (Some other Free Software Foundation software is covered by the GNU Lesser General Public License instead.) You can apply it to your programs, too.

When we speak of free software, we are referring to freedom, not price. Our General Public Licenses are designed to make sure that you have the freedom to distribute copies of free software (and charge for this service if you wish), that you receive source code or can get it if you want it, that you can change the software or use pieces of it in new free programs; and that you know you can do these things.

To protect your rights, we need to make restrictions that forbid anyone to deny you these rights or to ask you to surrender the rights. These restrictions translate to certain responsibilities for you if you distribute copies of the software, or if you modify it.

For example, if you distribute copies of such a program, whether gratis or for a fee, you must give the recipients all the rights that you have. You must make sure that they, too, receive or can get the source code. And you must show them these terms so they know their rights.

We protect your rights with two steps: (1) copyright the software, and (2) offer you this license which gives you legal permission to copy, distribute and/or modify the software.

Also, for each author's protection and ours, we want to make certain that everyone understands that there is no warranty for this free software. If the software is modified by someone else and passed on, we want its recipients to know that what they have is not the original, so that any problems introduced by others will not reflect on the original authors' reputations.

Finally, any free program is threatened constantly by software patents. We wish to avoid the danger that redistributors of a free program will individually obtain patent licenses, in effect making the program proprietary. To prevent this, we have made it clear that any patent must be licensed for everyone's free use or not licensed at all.

The precise terms and conditions for copying, distribution and modification follow.

TERMS AND CONDITIONS FOR COPYING, DISTRIBUTION AND MODIFICATION

0. This License applies to any program or other work which contains a notice placed by the copyright holder saying it may be distributed under the terms of this General Public License. The "Program", below, refers to any such program or work, and a "work based on the Program" means either the Program or any derivative work under copyright law: that is to say, a work containing the Program or a portion of it, either verbatim or with modifications and/or translated into another language. (Hereinafter, translation is included without limitation in the term "modification".) Each licensee is addressed as "you".

Activities other than copying, distribution and modification are not covered by this License; they are outside its scope. The act of running the Program is not restricted, and the output from the Program is covered only if its contents constitute a work based on the Program (independent of having been made by running the Program). Whether that is true depends on what the Program does.

1. You may copy and distribute verbatim copies of the Program's source code as you receive it, in any medium, provided that you

conspicuously and appropriately publish on each copy an appropriate copyright notice and disclaimer of warranty; keep intact all the notices that refer to this License and to the absence of any warranty; and give any other recipients of the Program a copy of this License along with the Program.

You may charge a fee for the physical act of transferring a copy, and you may at your option offer warranty protection in exchange for a fee.

2. You may modify your copy or copies of the Program or any portion of it, thus forming a work based on the Program, and copy and distribute such modifications or work under the terms of Section 1 above, provided that you also meet all of these conditions:

a) You must cause the modified files to carry prominent notices stating that you changed the files and the date of any change.

b) You must cause any work that you distribute or publish, that in whole or in part contains or is derived from the Program or any part thereof, to be licensed as a whole at no charge to all third parties under the terms of this License.

c) If the modified program normally reads commands interactively when run, you must cause it, when started running for such

interactive use in the most ordinary way, to print or display an announcement including an appropriate copyright notice and a notice that there is no warranty (or else, saying that you provide a warranty) and that users may redistribute the program under these conditions, and telling the user how to view a copy of this License. (Exception: if the Program itself is interactive but does not normally print such an announcement, your work based on the Program is not required to print an announcement.)

These requirements apply to the modified work as a whole. If identifiable sections of that work are not derived from the Program, and can be reasonably considered independent and separate works in themselves, then this License, and its terms, do not apply to those sections when you distribute them as separate works. But when you distribute the same sections as part of a whole which is a work based on the Program, the distribution of the whole must be on the terms of this License, whose permissions for other licensees extend to the entire whole, and thus to each and every part regardless of who wrote it.

Thus, it is not the intent of this section to claim rights or contest your rights to work written entirely by you; rather, the intent is to exercise the right to control the distribution of derivative or collective works based on the Program.

In addition, mere aggregation of another work not based on the Program with the Program (or with a work based on the Program)

on a volume of a storage or distribution medium does not bring the other work under the scope of this License.

3. You may copy and distribute the Program (or a work based on it, under Section 2) in object code or executable form under the terms of Sections 1 and 2 above provided that you also do one of the following:

we use this doubled UL to get the sub-sections indented, while making the bullets as unobvious as possible.

a) Accompany it with the complete corresponding machine-readable source code, which must be distributed under the terms of Sections 1 and 2 above on a medium customarily used for software interchange; or,

b) Accompany it with a written offer, valid for at least three years, to give any third party, for a charge no more than your cost of physically performing source distribution, a complete machine-readable copy of the corresponding source code, to be distributed under the terms of Sections 1 and 2 above on a medium customarily used for software interchange; or,

c) Accompany it with the information you received as to the offer to distribute corresponding source code. (This alternative is allowed only for noncommercial distribution and only if you received the

program in object code or executable form with such an offer, in accord with Subsection b above.)

The source code for a work means the preferred form of the work for making modifications to it. For an executable work, complete source code means all the source code for all modules it contains, plus any associated interface definition files, plus the scripts used to control compilation and installation of the executable. However, as a special exception, the source code distributed need not include anything that is normally distributed (in either source or binary form) with the major components (compiler, kernel, and so on) of the operating system on which the executable runs, unless that component itself accompanies the executable.

If distribution of executable or object code is made by offering access to copy from a designated place, then offering equivalent access to copy the source code from the same place counts as distribution of the source code, even though third parties are not compelled to copy the source along with the object code.

4. You may not copy, modify, sublicense, or distribute the Program except as expressly provided under this License. Any attempt otherwise to copy, modify, sublicense or distribute the Program is void, and will automatically terminate your rights under this License. However, parties who have received copies, or rights, from you under this License will not have their licenses terminated so long as such parties remain in full compliance.

5. You are not required to accept this License, since you have not signed it. However, nothing else grants you permission to modify or distribute the Program or its derivative works. These actions are prohibited by law if you do not accept this License. Therefore, by modifying or distributing the Program (or any work based on the Program), you indicate your acceptance of this License to do so, and all its terms and conditions for copying, distributing or modifying the Program or works based on it.

6. Each time you redistribute the Program (or any work based on the Program), the recipient automatically receives a license from the original licensor to copy, distribute or modify the Program subject to these terms and conditions. You may not impose any further restrictions on the recipients' exercise of the rights granted herein. You are not responsible for enforcing compliance by third parties to this License.

7. If, as a consequence of a court judgment or allegation of patent infringement or for any other reason (not limited to patent issues), conditions are imposed on you (whether by court order, agreement or otherwise) that contradict the conditions of this License, they do not excuse you from the conditions of this License. If you cannot distribute so as to satisfy simultaneously your obligations under this License and any other pertinent obligations, then as a consequence you may not distribute the Program at all. For example, if a patent license would not permit royalty-free

redistribution of the Program by all those who receive copies directly or indirectly through you, then the only way you could satisfy both it and this License would be to refrain entirely from distribution of the Program.

If any portion of this section is held invalid or unenforceable under any particular circumstance, the balance of the section is intended to apply and the section as a whole is intended to apply in other circumstances.

It is not the purpose of this section to induce you to infringe any patents or other property right claims or to contest validity of any such claims; this section has the sole purpose of protecting the integrity of the free software distribution system, which is implemented by public license practices. Many people have made generous contributions to the wide range of software distributed through that system in reliance on consistent application of that system; it is up to the author/donor to decide if he or she is willing to distribute software through any other system and a licensee cannot impose that choice.

This section is intended to make thoroughly clear what is believed to be a consequence of the rest of this License.

8. If the distribution and/or use of the Program is restricted in certain countries either by patents or by copyrighted interfaces, the original copyright holder who places the Program under this License may add an explicit geographical distribution limitation

excluding those countries, so that distribution is permitted only in or among countries not thus excluded. In such case, this License incorporates the limitation as if written in the body of this License.

9. The Free Software Foundation may publish revised and/or new versions of the General Public License from time to time. Such new versions will be similar in spirit to the present version, but may differ in detail to address new problems or concerns.

Each version is given a distinguishing version number. If the Program specifies a version number of this License which applies to it and "any later version", you have the option of following the terms and conditions either of that version or of any later version published by the Free Software Foundation. If the Program does not specify a version number of this License, you may choose any version ever published by the Free Software Foundation.

10. If you wish to incorporate parts of the Program into other free programs whose distribution conditions are different, write to the author to ask for permission. For software which is copyrighted by the Free Software Foundation, write to the Free Software Foundation; we sometimes make exceptions for this. Our decision will be guided by the two goals of preserving the free status of all derivatives of our free software and of promoting the sharing and reuse of software generally.

NO WARRANTY

11. BECAUSE THE PROGRAM IS LICENSED FREE OF CHARGE, THERE IS NO WARRANTY FOR THE PROGRAM, TO THE EXTENT PERMITTED BY APPLICABLE LAW. EXCEPT WHEN OTHERWISE STATED IN WRITING THE COPYRIGHT HOLDERS AND/OR OTHER PARTIES PROVIDE THE PROGRAM "AS IS" WITHOUT WARRANTY OF ANY KIND, EITHER EXPRESSED OR IMPLIED, INCLUDING, BUT NOT LIMITED TO, THE IMPLIED WARRANTIES OF MERCHANTABILITY AND FITNESS FOR A PARTICULAR PURPOSE. THE ENTIRE RISK AS TO THE QUALITY AND PERFORMANCE OF THE PROGRAM IS WITH YOU. SHOULD THE PROGRAM PROVE DEFECTIVE, YOU ASSUME THE COST OF ALL NECESSARY SERVICING, REPAIR OR CORRECTION.

12. IN NO EVENT UNLESS REQUIRED BY APPLICABLE LAW OR AGREED TO IN WRITING WILL ANY COPYRIGHT HOLDER, OR ANY OTHER PARTY WHO MAY MODIFY AND/OR REDISTRIBUTE THE PROGRAM AS PERMITTED ABOVE, BE LIABLE TO YOU FOR DAMAGES, INCLUDING ANY GENERAL, SPECIAL, INCIDENTAL OR CONSEQUENTIAL DAMAGES ARISING OUT OF THE USE OR INABILITY TO USE THE PROGRAM (INCLUDING BUT NOT LIMITED TO LOSS OF DATA OR DATA BEING RENDERED INACCURATE OR LOSSES SUSTAINED BY YOU OR THIRD PARTIES OR A FAILURE OF

THE PROGRAM TO OPERATE WITH ANY OTHER PROGRAMS), EVEN IF SUCH HOLDER OR OTHER PARTY HAS BEEN ADVISED OF THE POSSIBILITY OF SUCH DAMAGES.

END OF TERMS AND CONDITIONS

How to Apply These Terms to Your New Programs

If you develop a new program, and you want it to be of the greatest possible use to the public, the best way to achieve this is to make it free software which everyone can redistribute and change under these terms.

To do so, attach the following notices to the program. It is safest to attach them to the start of each source file to most effectively convey the exclusion of warranty; and each file should have at least the "copyright" line and a pointer to where the full notice is found.

```
one line to give the program's name and an idea of what it does.  
Copyright (C) yyyy name of author
```

```
This program is free software; you can redistribute it and/or  
modify it under the terms of the GNU General Public License  
as published by the Free Software Foundation; either version 2  
of the License, or (at your option) any later version.
```

```
This program is distributed in the hope that it will be useful,  
but WITHOUT ANY WARRANTY; without even the implied warranty of  
MERCHANTABILITY or FITNESS FOR A PARTICULAR PURPOSE. See the  
GNU General Public License for more details.
```

You should have received a copy of the GNU General Public License along with this program; if not, write to the Free Software

Foundation, Inc., 51 Franklin Street, Fifth Floor, Boston, MA 02110-1301, USA.

Also add information on how to contact you by electronic and paper mail.

If the program is interactive, make it output a short notice like this when it starts in an interactive mode:

```
Gnomovision version 69, Copyright (C) year name of author
Gnomovision comes with ABSOLUTELY NO WARRANTY; for details
type `show w'. This is free software, and you are welcome
to redistribute it under certain conditions; type `show c'
for details.
```

The hypothetical commands ``show w'` and ``show c'` should show the appropriate parts of the General Public License. Of course, the commands you use may be called something other than ``show w'` and ``show c'`; they could even be mouse-clicks or menu items--whatever suits your program.

You should also get your employer (if you work as a programmer) or your school, if any, to sign a "copyright disclaimer" for the program, if necessary. Here is a sample; alter the names:

```
Yoyodyne, Inc., hereby disclaims all copyright
interest in the program `Gnomovision'
(which makes passes at compilers) written
by James Hacker.
```

```
signature of Ty Coon, 1 April 1989
Ty Coon, President of Vice
```

This General Public License does not permit incorporating your program into proprietary programs. If your program is a subroutine library, you may consider it more useful to permit linking proprietary applications with the library. If this is what you want to do, use the [GNU Lesser General Public License](#) instead of this

License.

Notification of Compliance

Europe - EU Declaration of Conformity



For complete DoC please visit

<http://global.level1.com/downloads.php?action=init>

GPL License Agreement

GPL may be included in this product, to view the GPL license agreement goes to

<http://download.level1.com/level1/gpl/GPL.pdf>

For GNU General Public License (GPL) related information, please visit

<http://global.level1.com/downloads.php?action=init>