



LevelOne

User Manual

PLI-4052

500Mbps Nano Powerline Adapter

Ver. 1.0



WEEE Directive & Product Disposal

At the end of its serviceable life,
this product should not be treated as household or general waste.
It should be handed over to the applicable collection point for
the recycling of electrical and electronics equipment,
or returned to the supplier for disposal.

Safety

CE

This equipment is in compliance with the requirements of the following regulations: CE
Mark, 2006/95/EC

RoHS

This product is RoHS compliant.

Table of Contents

Chapter 1 – Introduction	1
1.1 Overview	1
1.2 Specification	1
1.3 LED Indicators	1
1.4 Package Contents	1
1.5 System Requirements.....	1
Chapter 2 – Installation & Uninstallation	2
2.1 Installing Powerline Device	2
2.2 Installation of Powerline Utility.....	3
2.3 Uninstallation of Configuration Utility.....	10
Chapter 3 – Configuration Utility Setup.....	11
3.1 Map View	11
3.2 Detailed View.....	17
3.3 Device Setup	18
3.4 Advanced.....	19
3.5 Options	20
3.6 About Screen	21
3.7 Enabling Trace	21
Chapter 4 – Reset and Network ID Setting.....	22
4.1 Reset function	22
4.2 Network ID function	22

Chapter 1 – Introduction

1.1 Overview




The Powerline Device operates on HomePlug AV standard, providing up to 500Mbps data speed over the existing household power supply. This Product is cost-effective, easy to create a home network without spending time and money to run expensive CAT-5 cabling. Powerline Device is the best solution for no-new-wire networking in the house or office.

1.2 Specification

- Standard : IEEE 1901 and HomePlug AV compliant
- Speed : up to 500Mbps
- Modulation : supports OFDM 4096 / 1024/256/64/16/8 QAM, QPSK, BPSK, and ROBO modulation schemes.
- Frequency : 2 MHz ~ 68 MHz
- Security : 128-bits AES encryption
- IEEE802.3 10Base-T, IEEE802.3U 100Base-TX

1.3 LED Indicators

The Powerline Ethernet Adaptor has three LEDs indicator:

	Turn on when connected to AC power supply.
	Turn on when detected and connected with another HomePlug adaptor within the network.
	Turn on when connected to the Ethernet card of the computer or Ethernet Hub / Switch.

1.4 Package Contents

Make sure that you have the following items:

- Powerline Ethernet Adaptor
- RJ-45 Ethernet Network cable
- Powerline Utility CD
- Quick Installation Guide

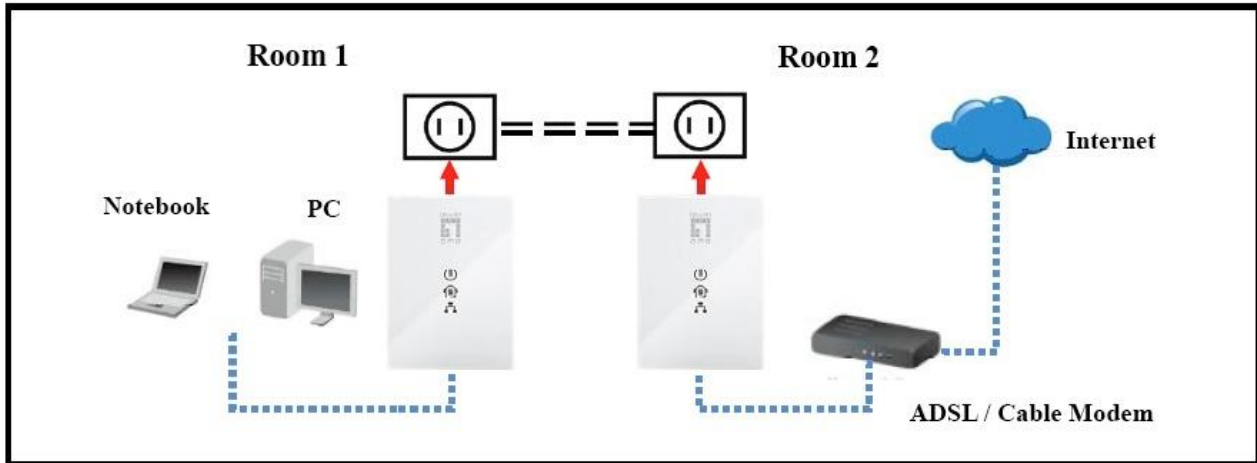
1.5 System Requirements

- Powerline Ethernet Adaptor can support any Operation System. But the Powerline Utility can only support Windows 2000/XP/Vista/Windows 7/Windows 8.
- Pentium III 300 MHz or above
- Powerline device
- AC power outlet

Chapter 2 – Installation & Uninstallation

Connection of Powerline Ethernet Adapter

Ethernet Cable (RJ-45)
Powerline = = = = =



2.1 Installing Powerline Device

1. If you have the SINGLE PACKAGE of Powerline, Connect the supplied RJ45 Ethernet cable from your PC's Ethernet port to the Powerline Ethernet Adapter's LAN Ports or connect the supplied RJ45 Ethernet cable from your xDSL/Cable Modem's Ethernet port to the Powerline Ethernet Adapter's LAN Ports.
2. If you have the TWIN PACKAGE of Powerline, connect the supplied RJ45 Ethernet cable from your PC's Ethernet port to the Powerline Ethernet Adapter's LAN Ports and connect the supplied RJ45 Ethernet cable from your xDSL/Cable Modem's Ethernet port to the Powerline Ethernet Adapter's LAN Ports.
3. Connect the Powerline Ethernet Adapter to your wall-mounted power outlet.
4. Check if the **PLC LED** of Powerline Ethernet Adapter is **ON**, the Powerline Ethernet Adapter is connected and suitable for Internet Connections.
5. Check if the **PLC LED** is **OFF**, the Powerline Ethernet Adapter isn't connected and suitable for Internet Connections. Please follow next step to have it connected and suitable for Internet Connections.

2.2 Installation of Powerline Utility

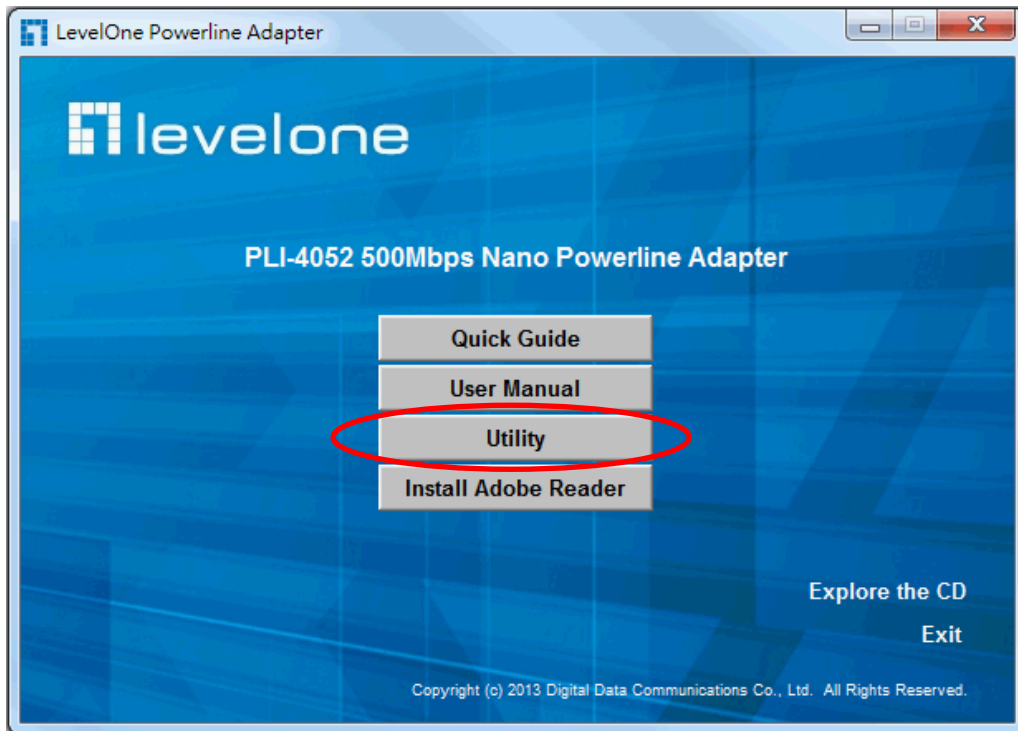
The Configuration Utility enables the users to identify HomePlug devices on the Powerline network, measures data rate performance, ensures privacy and performs diagnostics by setting user defined secure Powerline networks.

Users are requested to verify that no other Encryption Management Utilities are installed prior to the installation of this utility. Other utilities should be uninstalled before installing this utility.

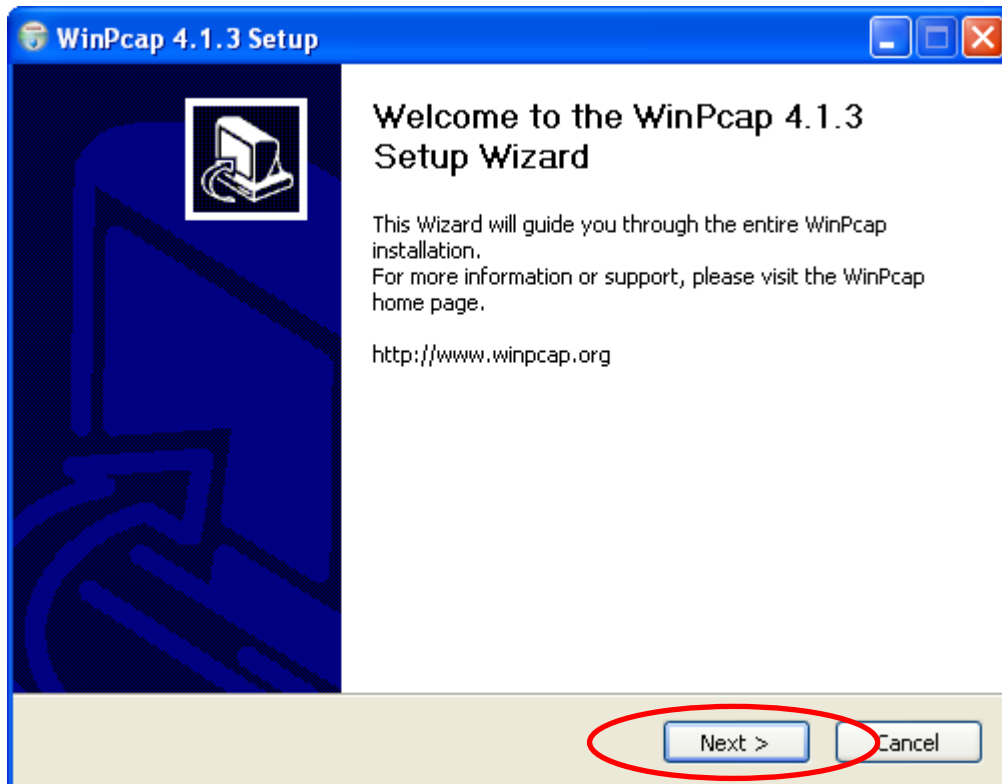
All screen shots in this document are generated from Windows XP; screen shots for Windows 7, Vista and Windows 8 will be similar.

1. In order to install, insert Configuration Utility CD-ROM into the computer's CD-ROM drive. The program shall run automatically. Alternatively this can also be done manually by double clicking the **autorun.exe** file on the CD.
2. For **Windows 8 / 7 / Vista User** only, for Security reasons Windows 8 / 7 / Vista requires the installer program to have administrator privileges so the new policy called "**User Account Control**" has been introduced in Windows 8 / 7 / Vista. If UAC is enabled Windows pops up a window "**User Account Control**" Windows need your permission to continue. User needs to click "**Yes / Allow**" to continue.

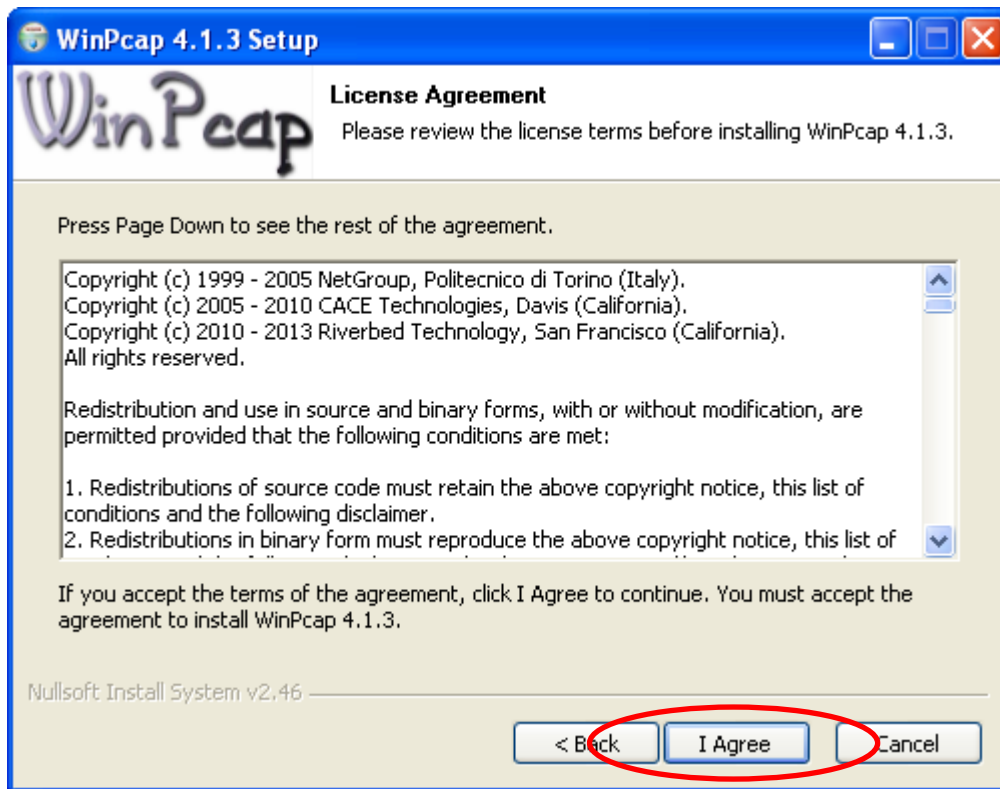
3. Please click **Power line Utility** button to continue.



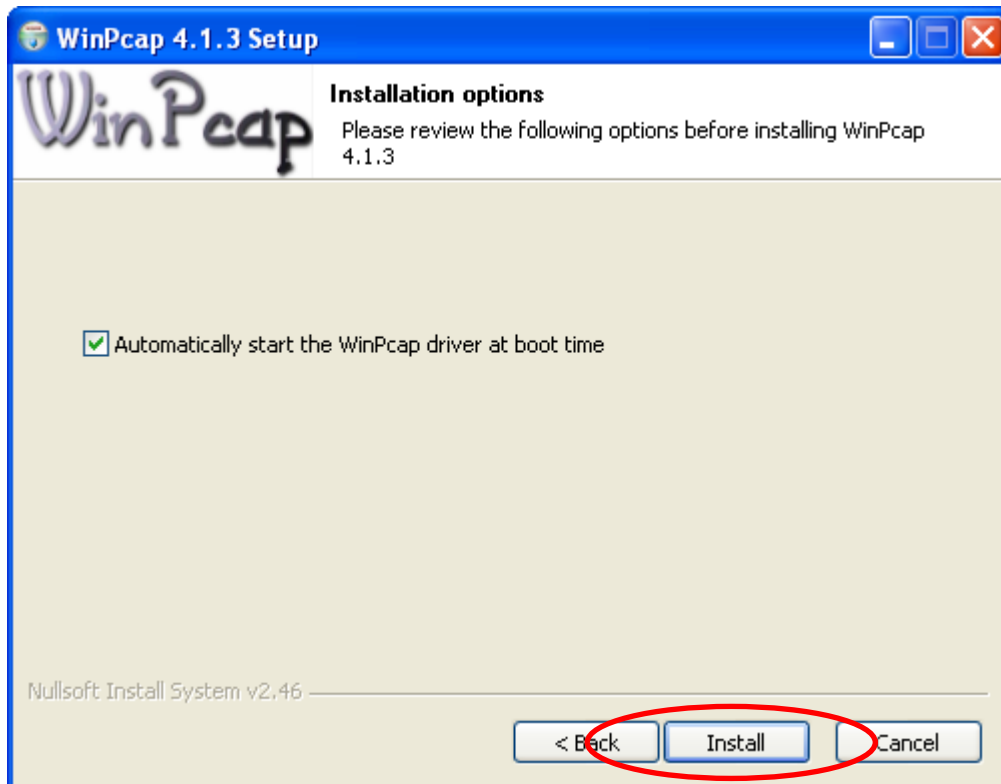
4. Click **Next** button to continue.



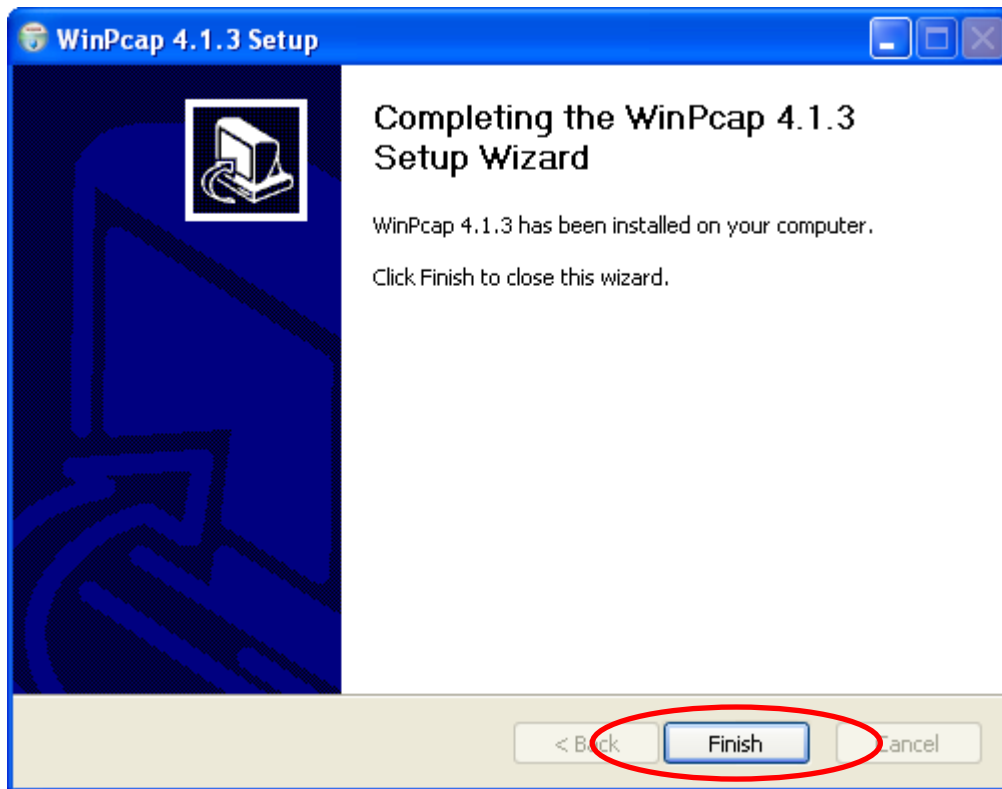
5. Click **"I Agree"** button to continue.



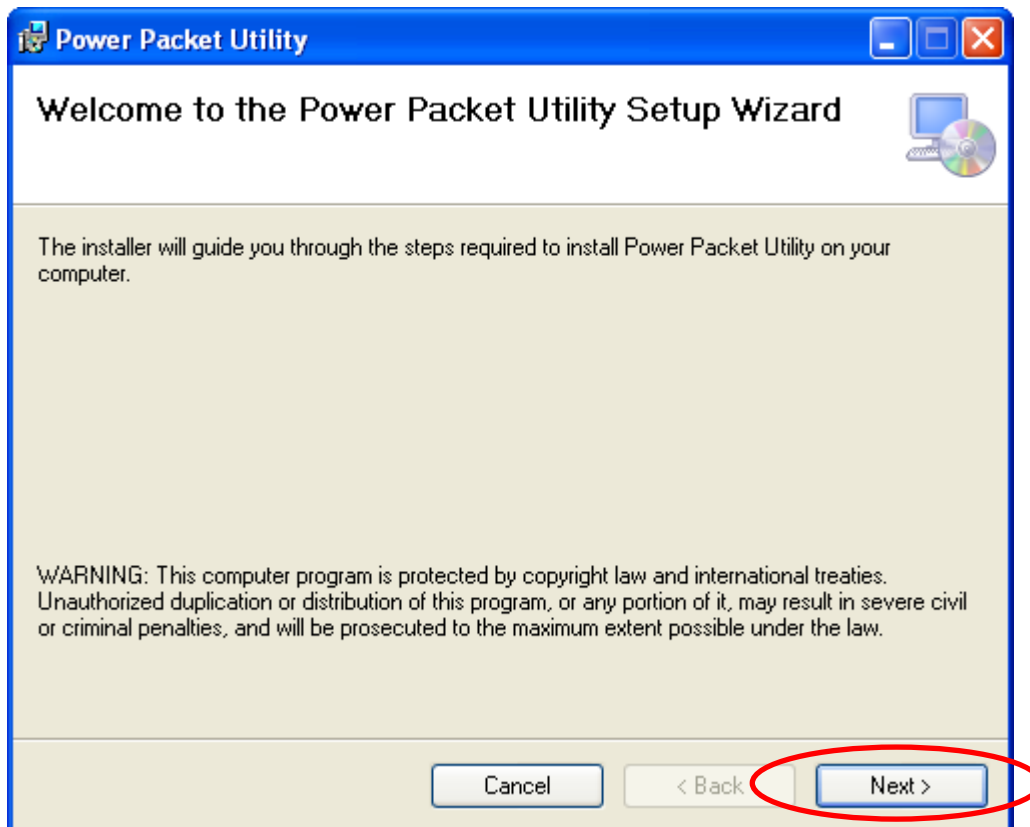
6. Click **"Install"** button to continue.



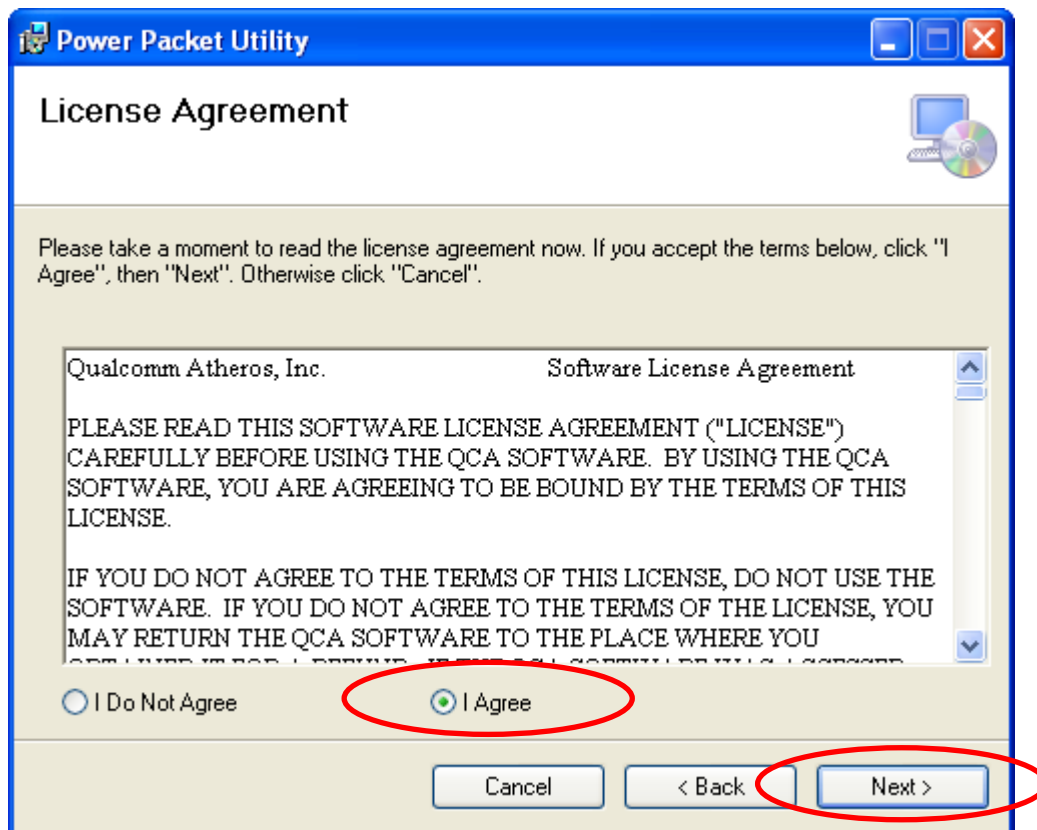
7. Click **Finish** button to continue.



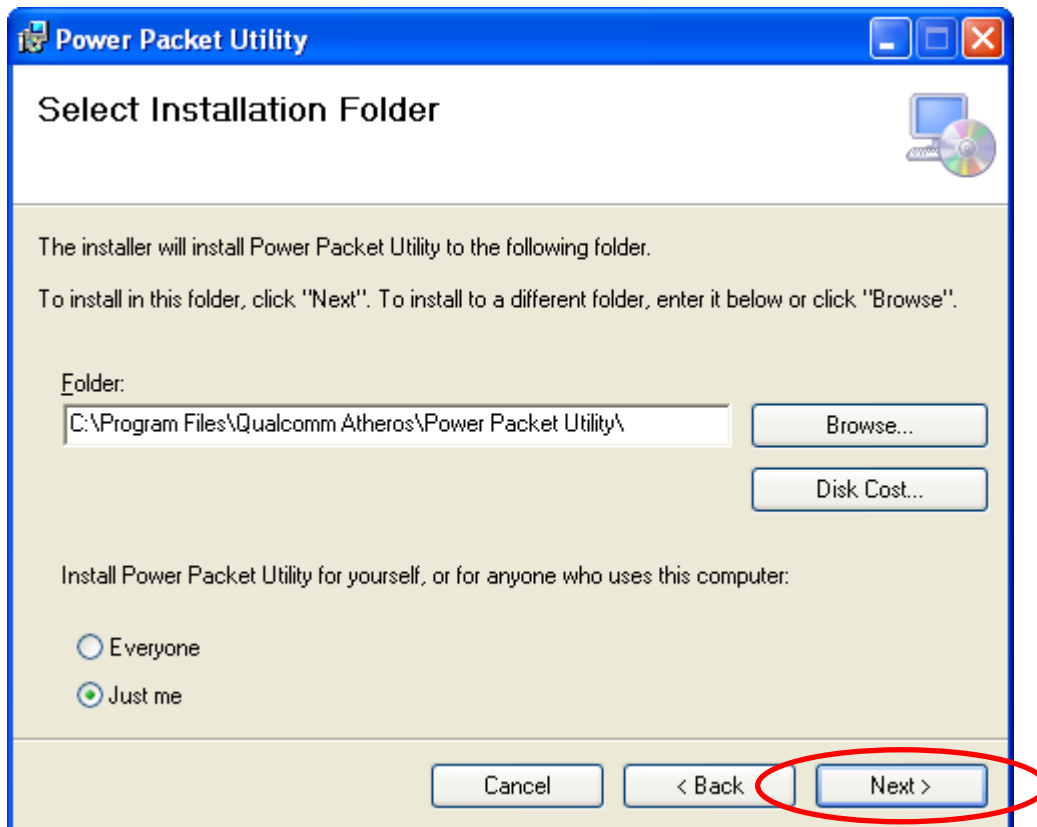
8. Click **Next** button to continue.



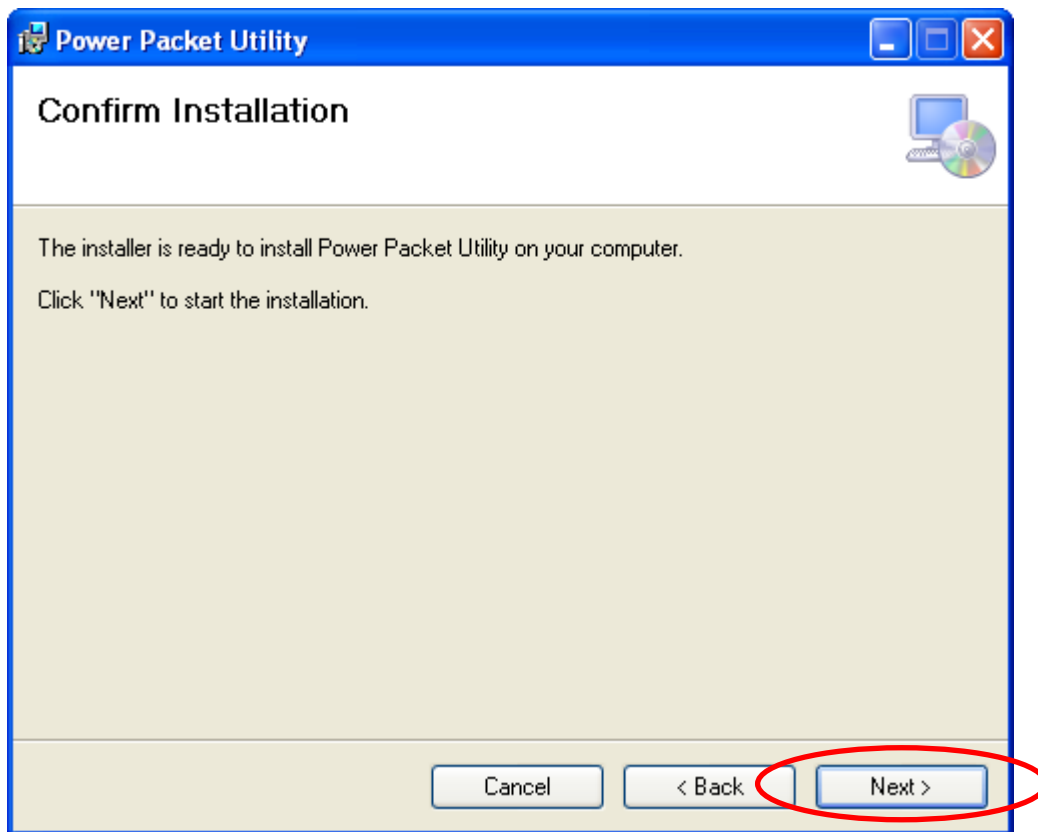
9. Click **"I Agree"** and then click **"Next"** button to continue.



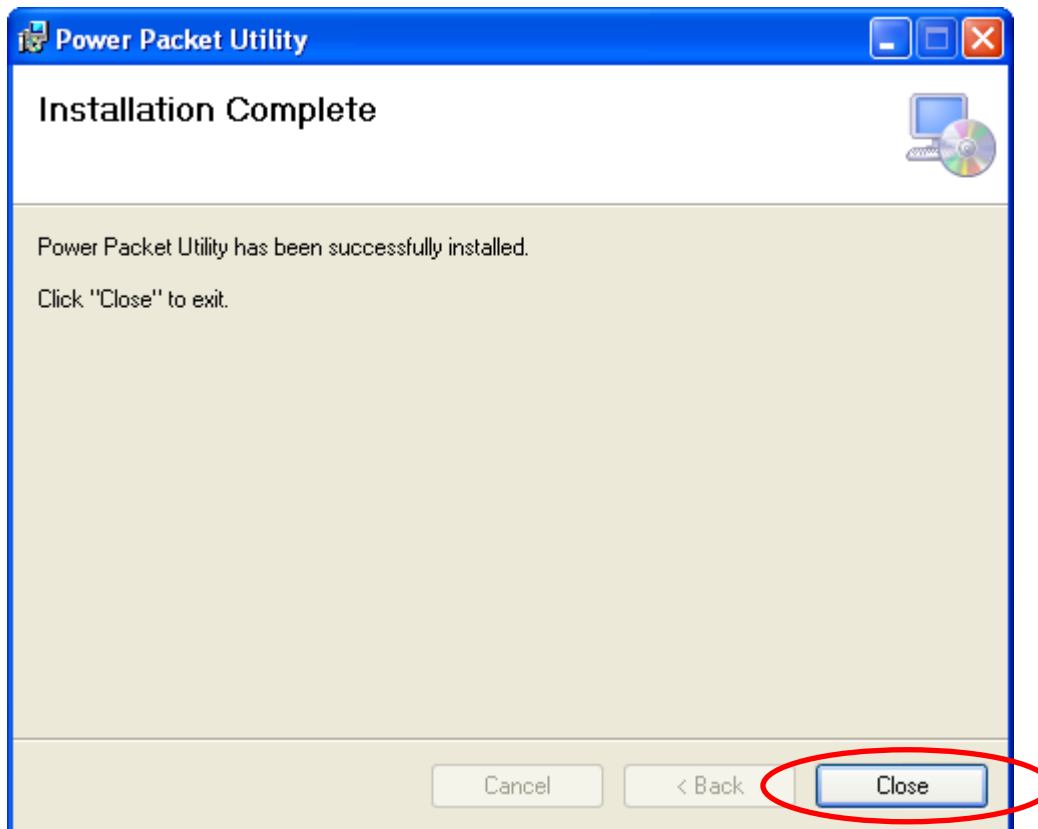
10. Click **"Next"** button to continue.



11. Click **Next** button to continue.



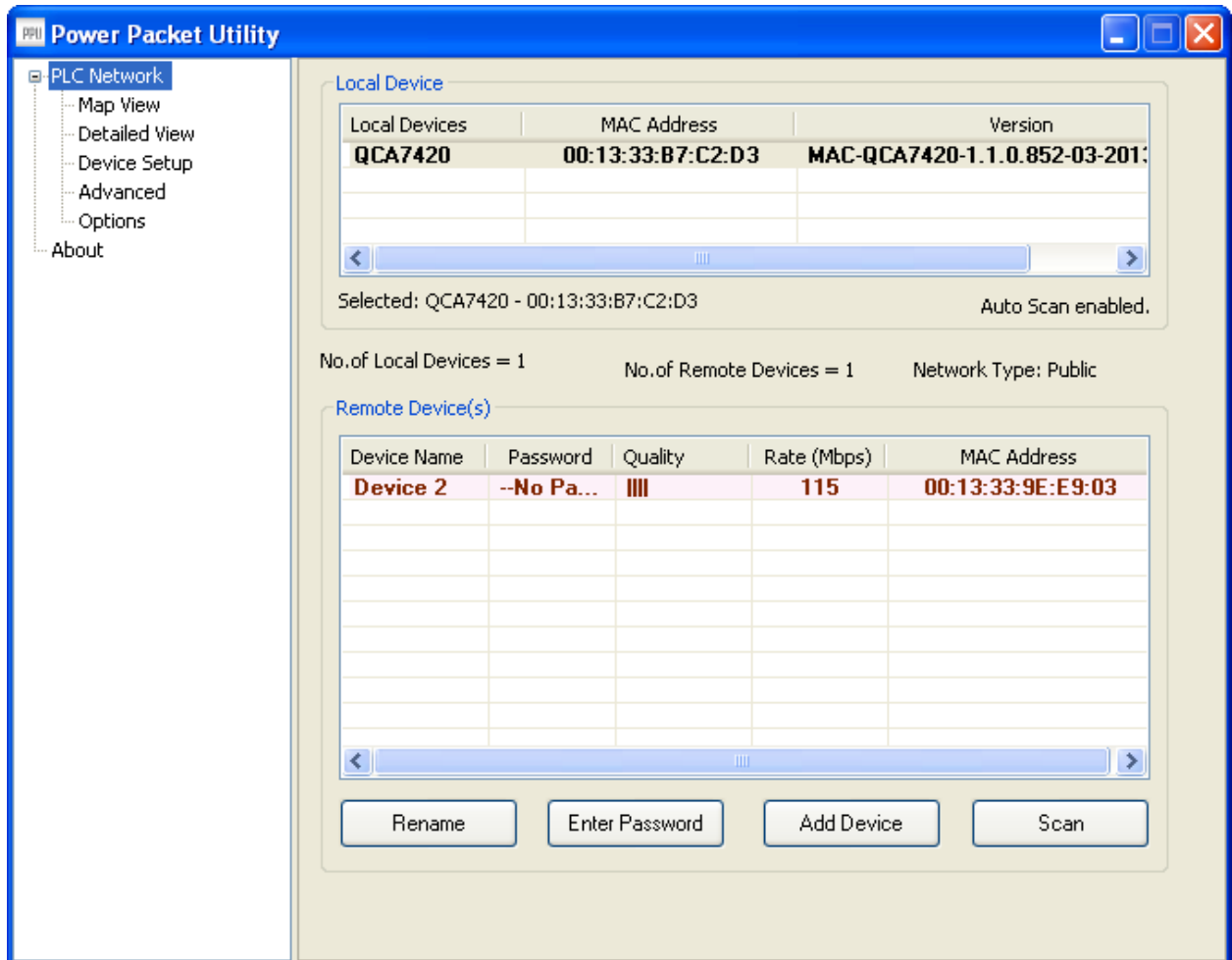
12. Click **Close** button to exit.



13. In order to start the utility, double-click the utility icon on desktop.

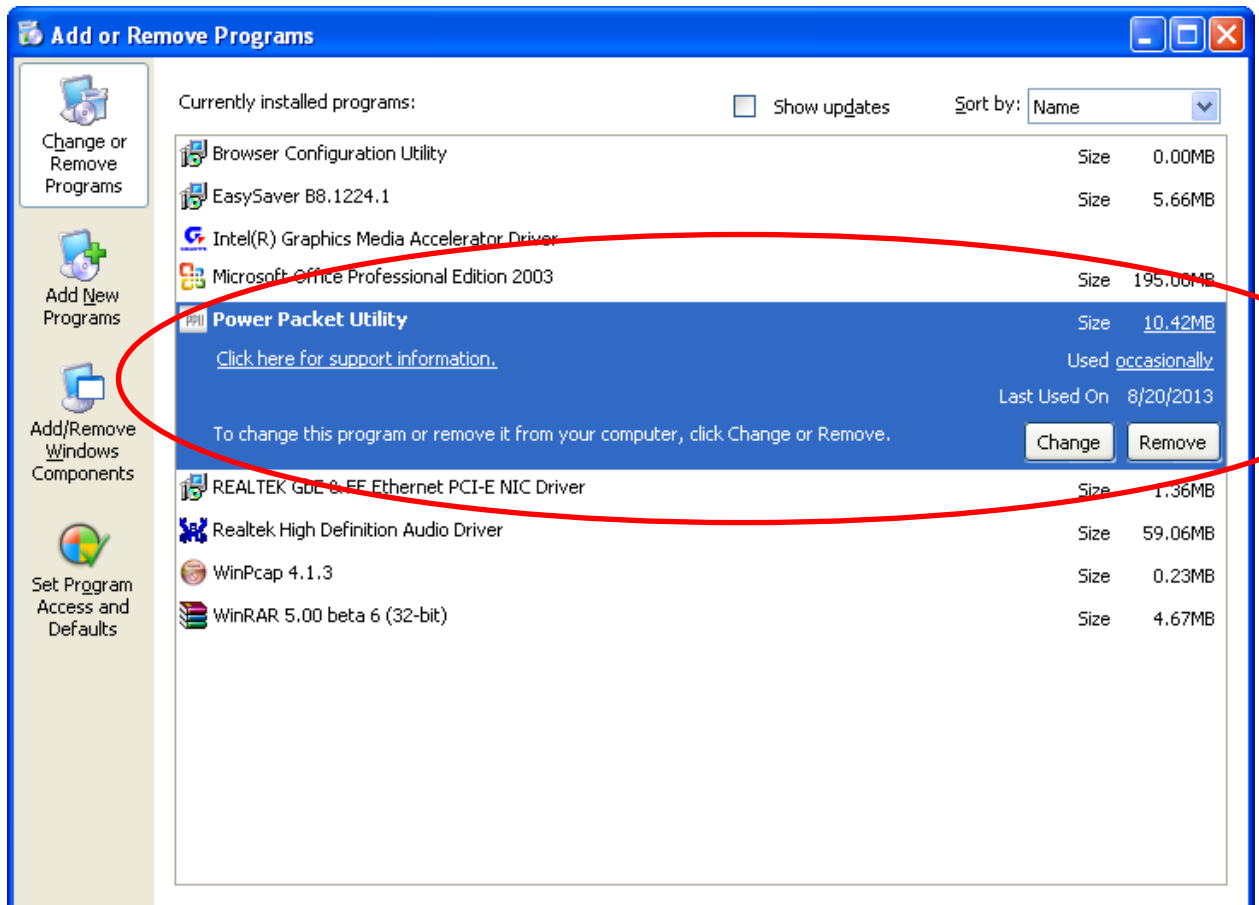


14. You can see your device working well. The top panel of the screen shot shows a Homeplug device connected locally to your computer. The bottom panel shows one device connected remotely to the computer running the utility.



2.3 Uninstallation of Configuration Utility

1. To uninstall the **Configuration Utility**, go to the “**Control Panel**” of your system.
2. Open the “**Add/Remove Programs**”.
3. Select and double click on the “**Powerline Utility**” in the **Add/Remove Programs Properties**.



4. Follow the on screen instructions to uninstall the **Powerline Utility**.

Chapter 3 – Configuration Utility Setup

Introduction

The Configuration Utility enables the users to identify HomePlug devices on the powerline network, measures data rate performance, ensures privacy and performs diagnostics by setting user defined secure powerline networks.

The Utility will use a Graphical User Interface (GUI) with limited user selectable options.

3.1 Map View



In order to start the utility, double-click the utility icon on desktop. Figure 3-1 shows the main screen of the Configuration Utility. The top panel of the screen shot shows a HomePlug AV device connected locally to the host computer. The bottom panel shows four devices connected remotely to the computer running the utility.

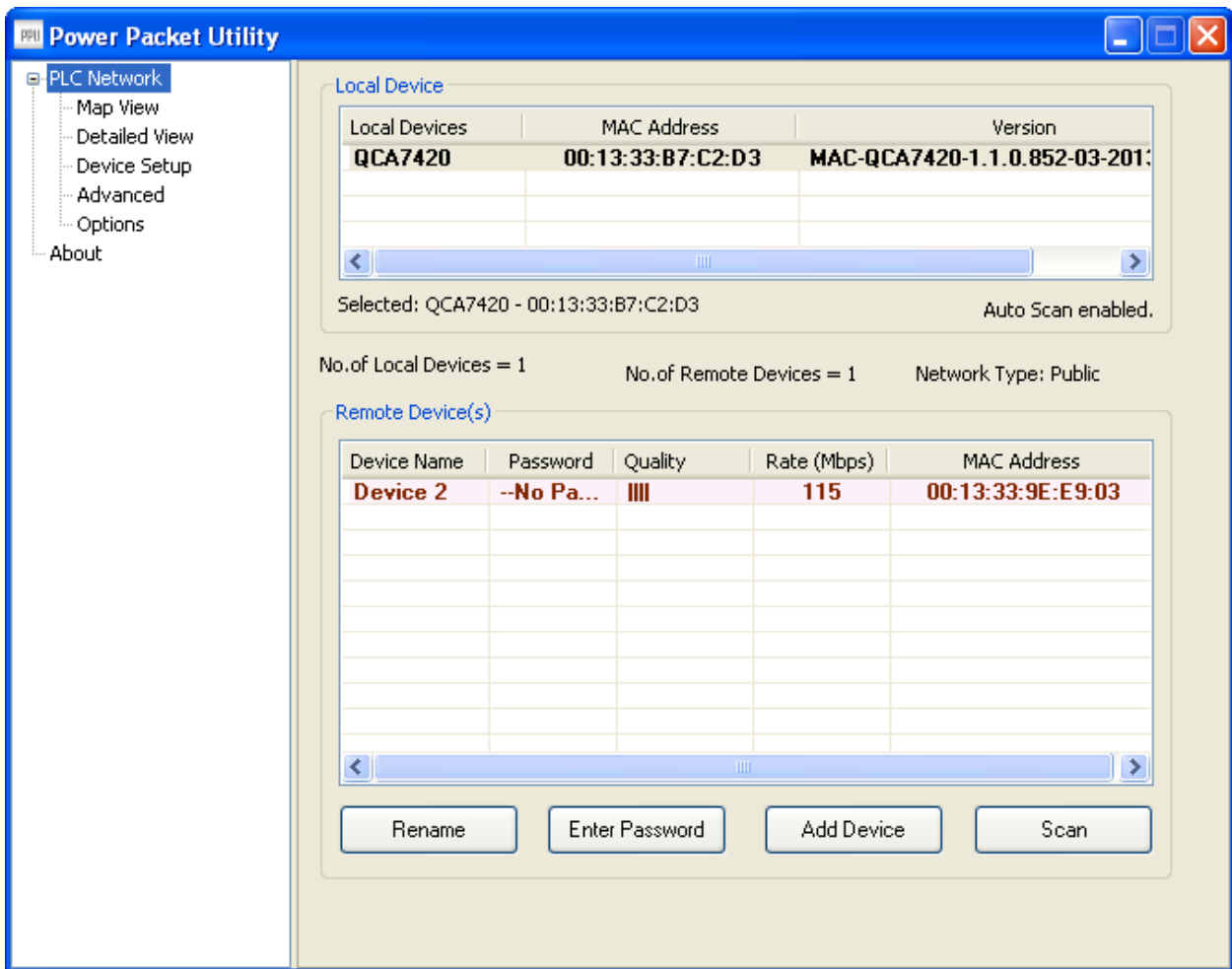


Figure 3-1: Main Screen with HomePlug AV device Local

The **Main** screen provides a list of all powerline devices logically connected to the computer when the utility is running. The **top panel** shows all local HomePlug devices connected to the computer's NIC (Network Interface Card). In most cases, only one device will be seen. In situations where there are more than one local device being connected, such as a USB or an Ethernet adapter, the user can select the local device by clicking on it and then click the **Connect** button to its right. The status area above RESET/NET.ID button indicates that your PC is connected to that same device. Once connected to the local device, the utility will automatically scan the power line periodically for any other HomePlug devices. If no local HomePlug devices are discovered, the status area above the connect button will indicate with a message 'NO HOMEPLUG ADAPTERS DETECTED'.

Figure 3-2 illustrates the presence of two local devices connected locally to the computer.

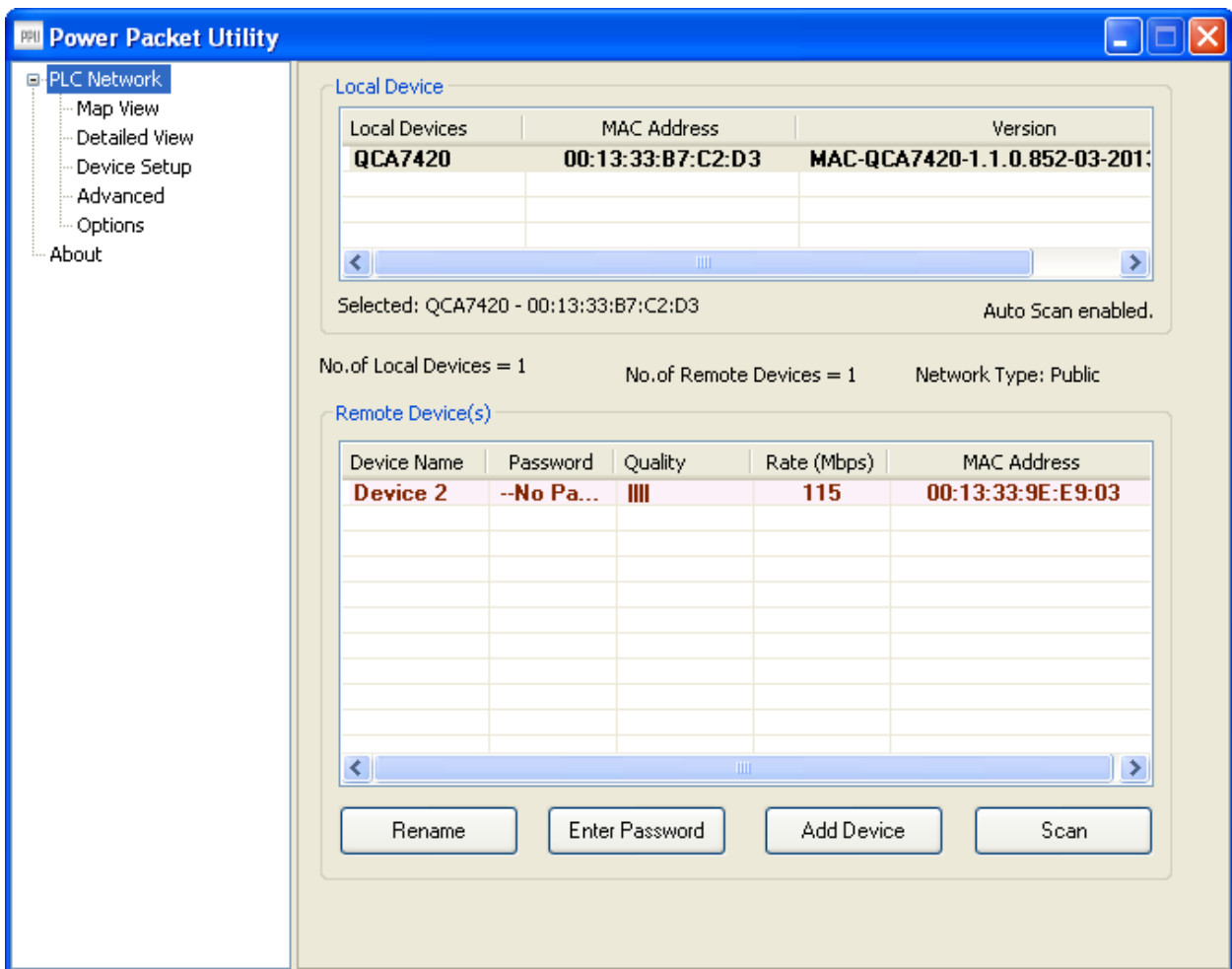


Figure 3-2: Multiple Local Device Connection

This tab displays the list of local devices and the list of remote devices currently associated with the selected local device. It shows the device type, MAC address and the version string. There are text indicators displaying which device is currently selected device, count of local devices, count of remote devices, network type and the auto scan status.

Once all the local devices are identified the remote devices associated with the currently selected local device are displayed. Also along with the remote device MAC the signal strength, device DAK (if available) and device alias name (if available) is displayed. Following are the list of fields which are to be displayed:

1. Device alias name: A user defined name by which a device with that particular MAC address will be referred as.
2. Password: The valid DAK of the device if it has been entered by the user.
3. Quality: Signal quality shown in one of the selected formats selected in the OEM preference editor.
4. Rate: Signal strength in Mbps.
5. MAC address: MAC address of the selected device.

Password column by default is blank and 'Enter Password' button can be used to enter it. To set the **Password** of the device (required when creating a private network), first select the device by clicking on its name in the lower panel and then click on the Enter Password button. A dialog box will appear as shown in Figure 3-3 to type the password. The selected device name is shown above the password field and the password can be verified by hitting the OK button. The Password field accepts the Device password in any case formats, with or without dashed between them. If a device was not found, the user will be notified along with the suggestions to resolve common problems. This process might take a few seconds to get completed.



Figure 3-3: Set Device Password

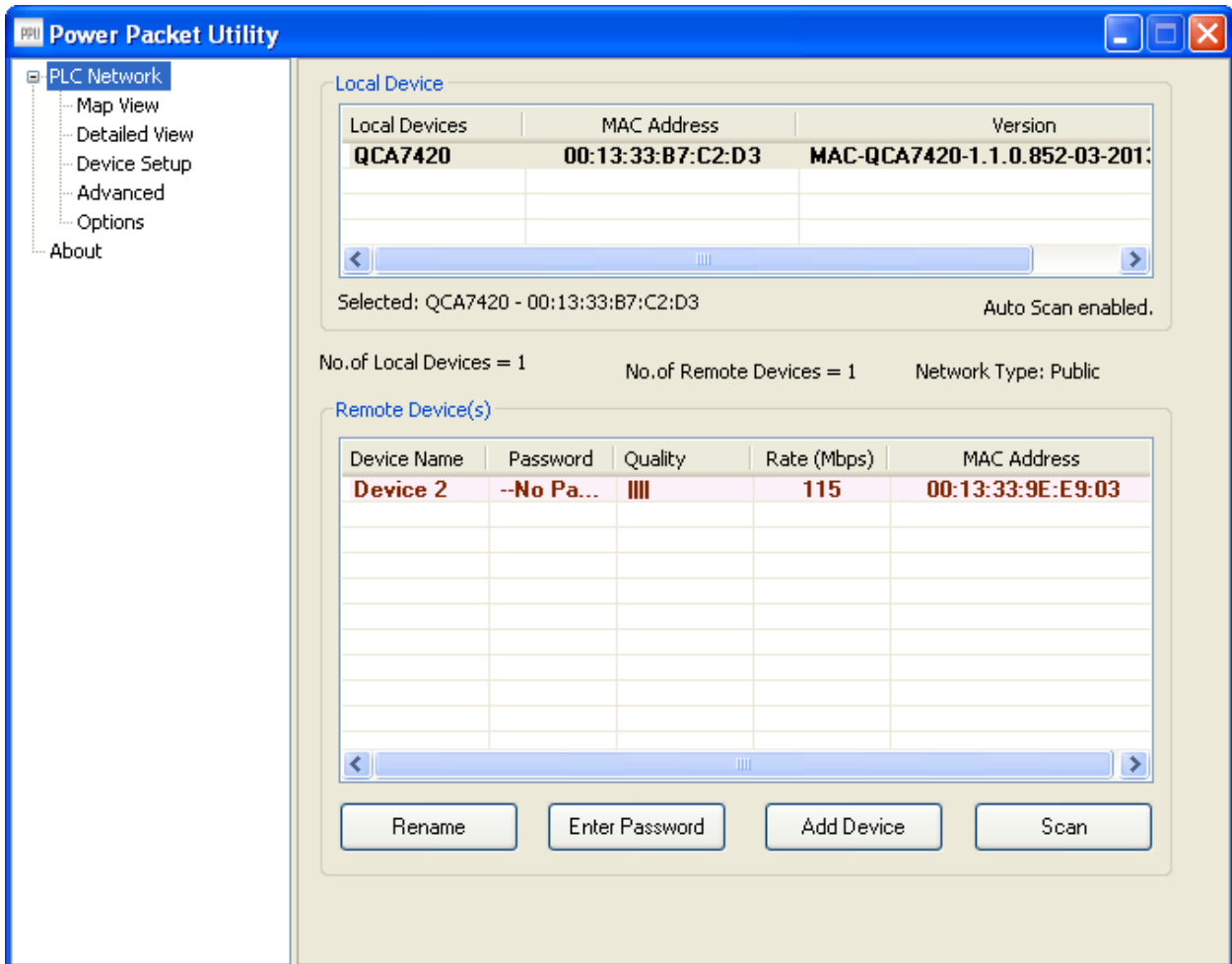
Add button is used to add a remote device to the existing network by entering the device password of the device. A dialog box will appear as shown below in Figure 3-4. The dialog box allows the user to enter both a device name and the password. If a device was not found, the user will be notified and suggestions to resolve common problems will be presented.



Figure 3-4: Add Remote Device

Note: The device must be present on the power line (plugged in) in order for the password to be confirmed and added to the network. If the device could not be located, a warning message will be shown.

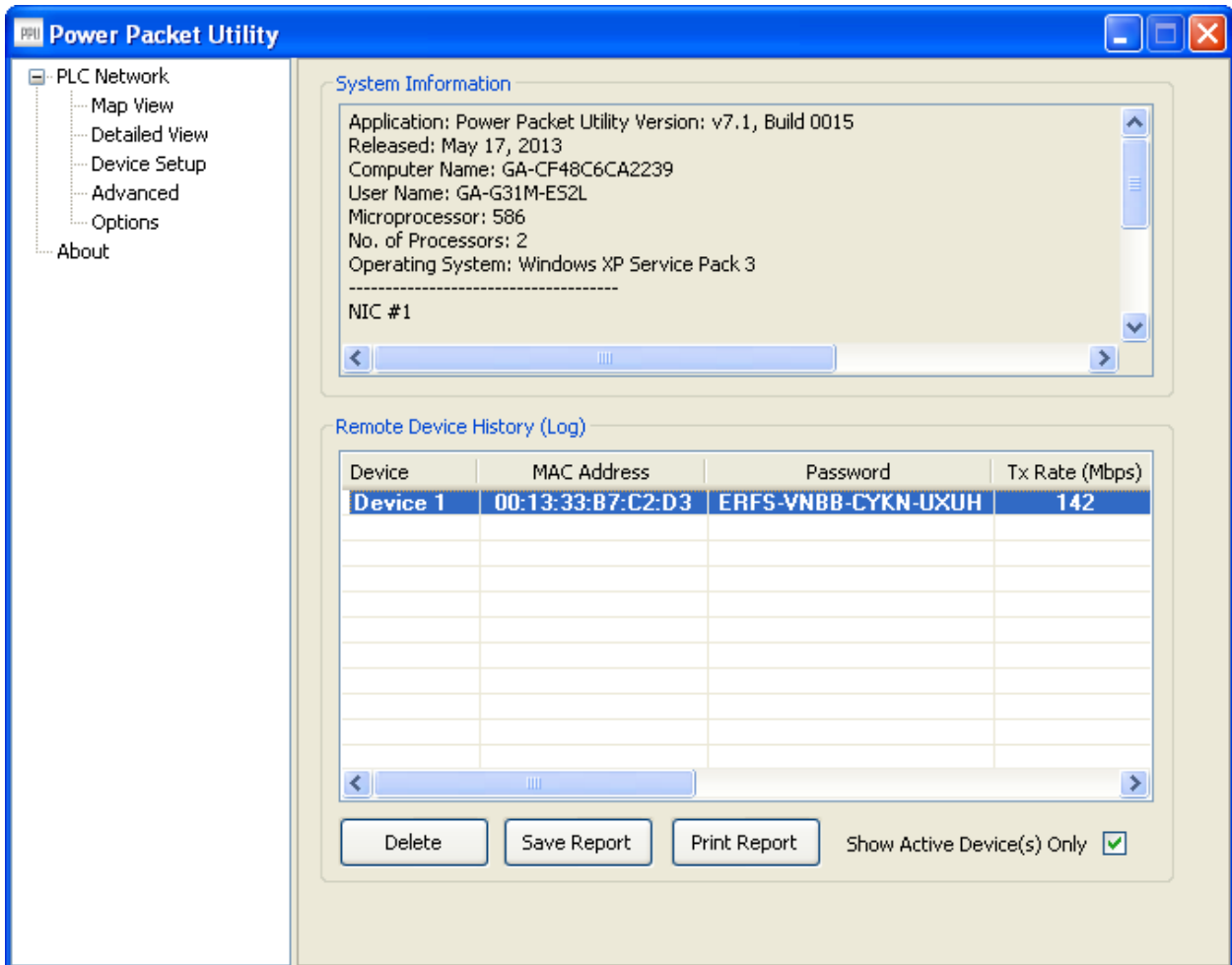
The **Scan** button is used to perform an immediate search of the HomePlug devices connected to the Powerline network. By default, the utility automatically scans every few seconds and updates the display screen.



3.2 Detailed View

The PPU should have local system information and also should maintain the history of remote devices. This information can be saved or printed. The following is the list of information required to be stored for a remote device:

- Device alias name
- MAC address
- Password
- Rate
- Network
- Last seen
- Vendor Name
- Firmware Version

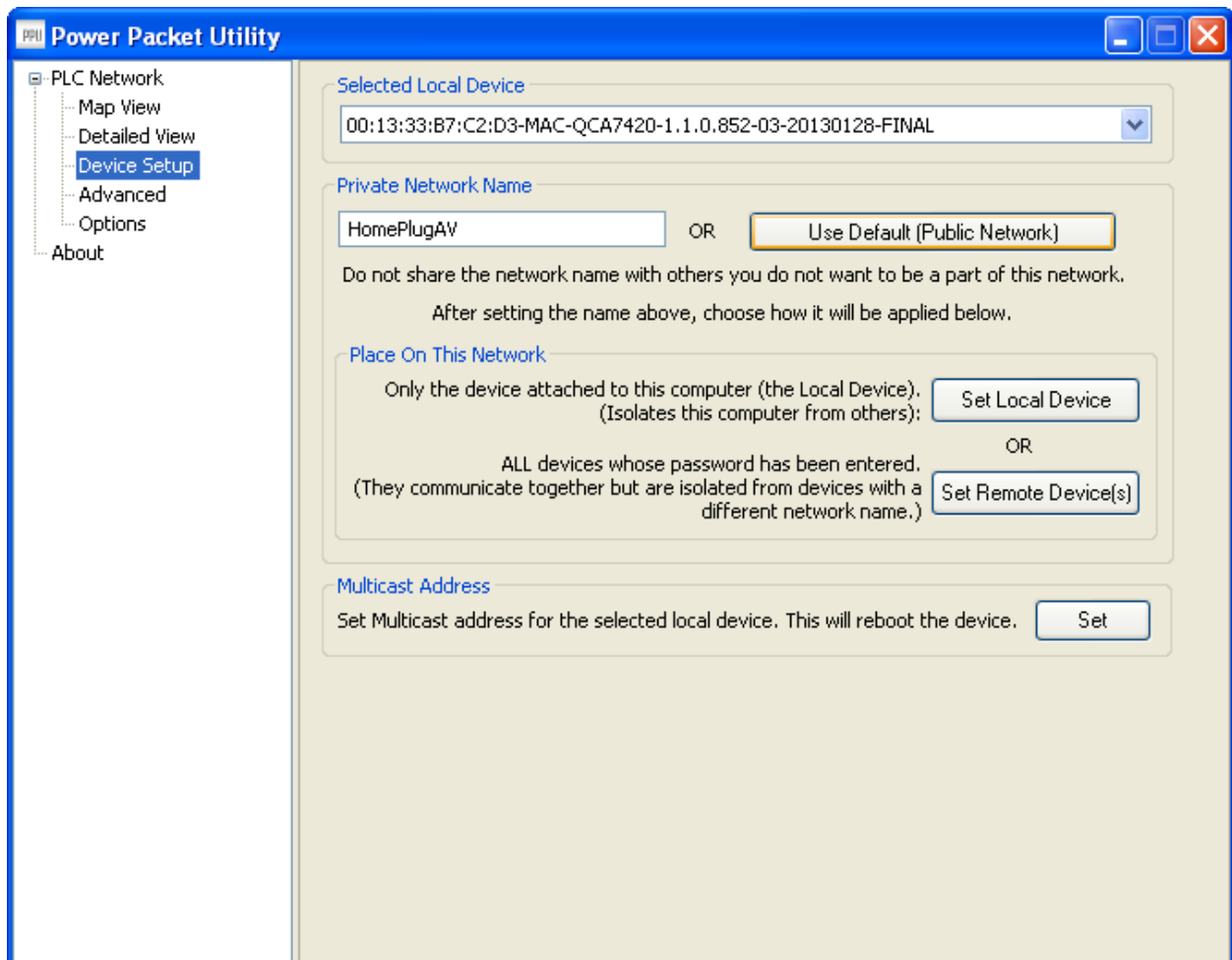


3.3 Device Setup

All the device setup related options can be found in this view. A combobox displays the local Devices

If the Network Name has been pre-configured on a local device to a value other than HomePlug or HomePlugAV (e.g. the push button pairing function on AV devices), the PPU will show the name as “Unknown Networkname”. Although a pre-configured Network Name can not be displayed, the hidden Network Name will be used to add new devices to the local network.

1. Set Local Device: This button will set the network name with the value in the text box in the local device.
2. Set Remote Device(s): This button will set the network name with the value in the text box in the local device as well the connected remote devices.
3. Use Default: This button will reset the value of the network name to “HomePlugAV”
4. “Set” – Multicast: This button will update the multicast filter addresses present in the local device configuration. PPU throws a message "This device does not support this update multicast settings option." Firmware versions less than v4.4 in INT/AR6400 devices and less than v5.2 in INT/AR7400 devices does not support this feature. Please note that firmware v4.5 in (INT/AR6400) does not support this feature



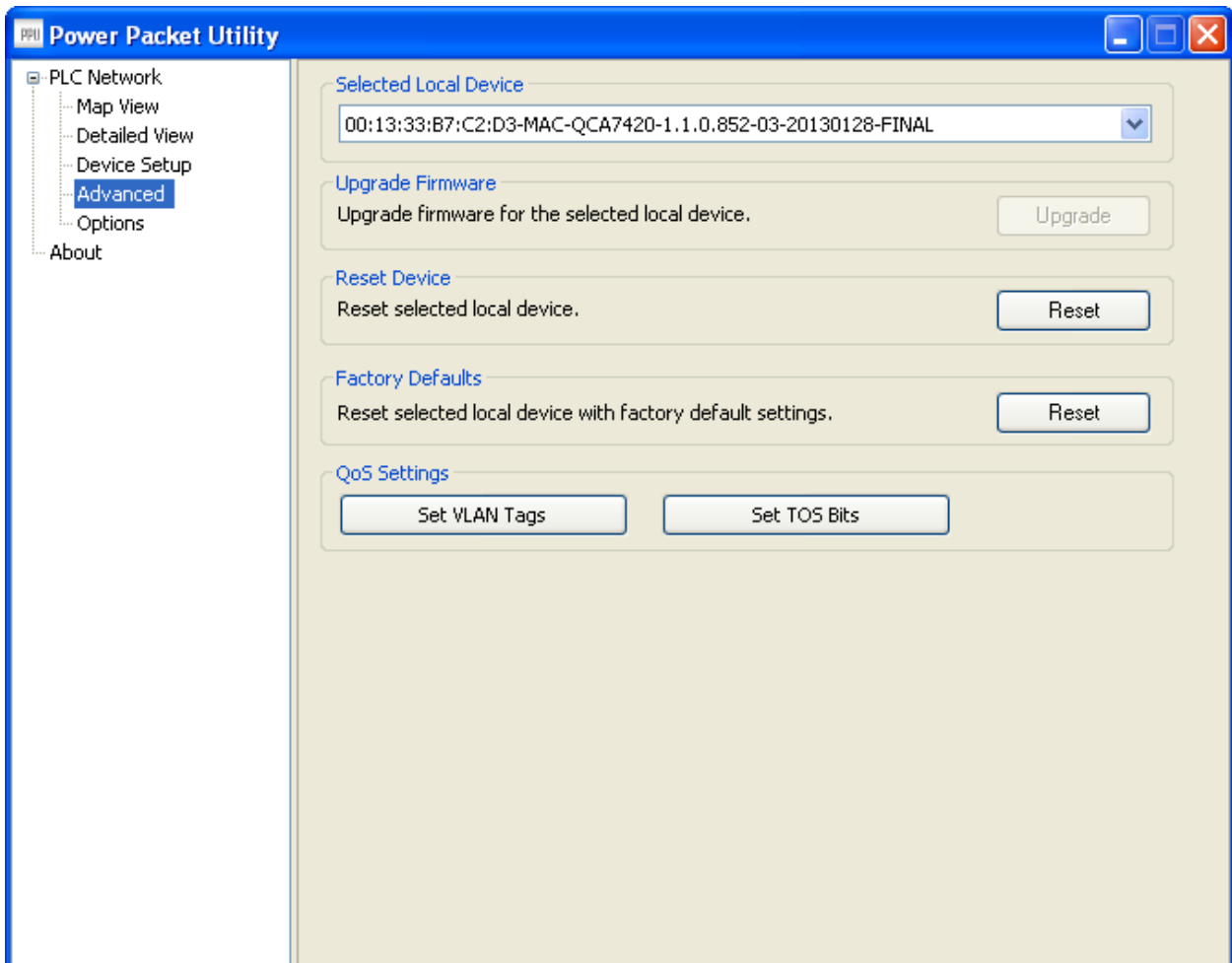
3.4 Advanced

This view contains the advanced options. All operations are with respect to selected local devices only. A combobox displays the local devices. Following are operations supported:

1. Upgrade firmware: To upgrade the firmware in a device click the upgrade button. Use the browse buttons to select the firmware and PIB files.

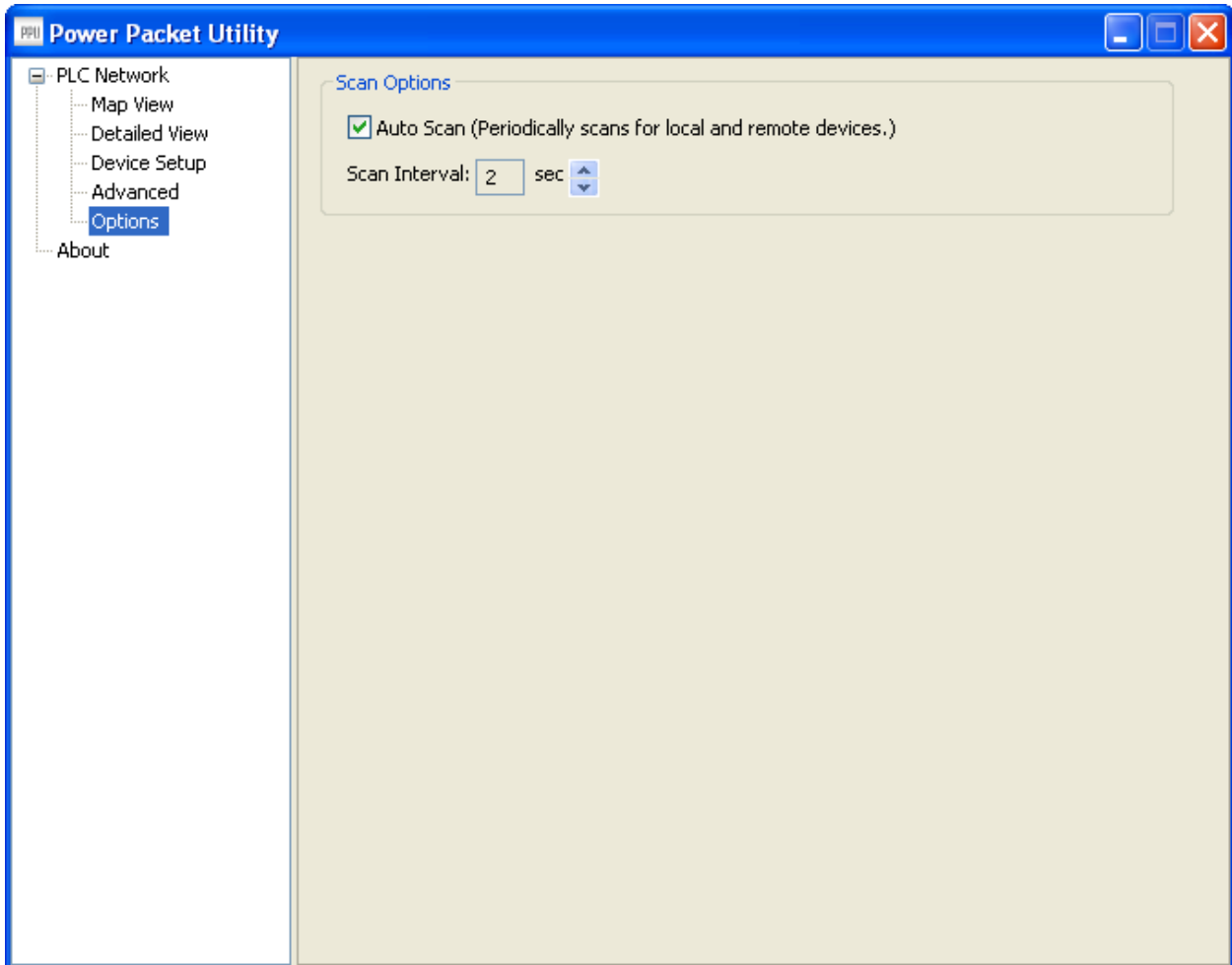
NOTE: The utility only supports upgrading of the local device. Remote device upgrades are not supported. Also if the device is in “Bootloader” mode (i.e) it has MAC address as 00:b0:00:00:00:01 then the firmware cannot be upgraded.

2. Reset Device.
3. Reset to factory defaults.
4. Set VLAN Tag
5. Set TOS bits.



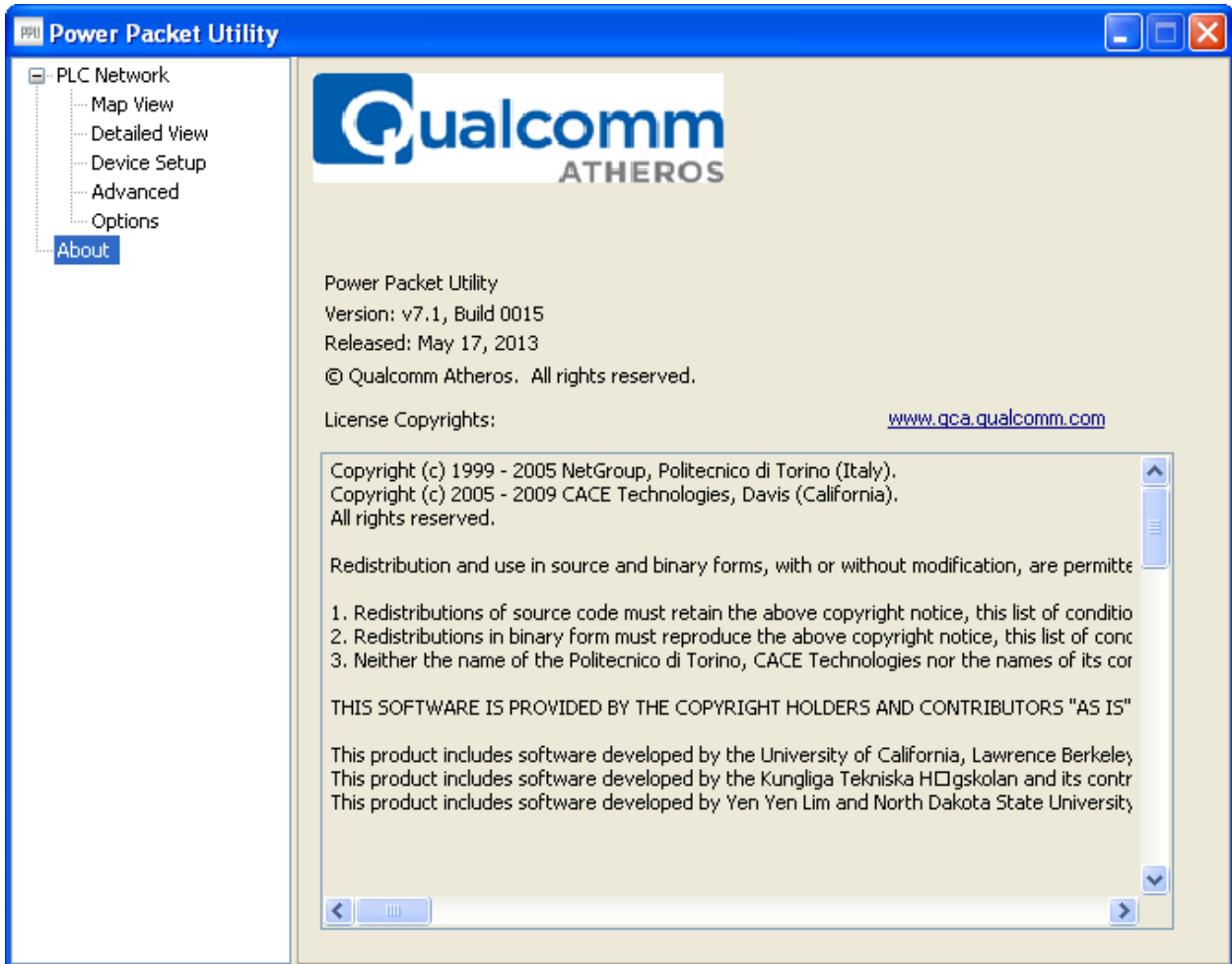
3.5 Options

This view is used to configure PPU settings. For now scan options is the only thing present in which auto scan can be checked and scan interval can be set (minimum 2 seconds and maximum is 60 seconds)



3.6 About Screen

The **About** screen shows the software version.



This view PPU Information, logo, version, release date, licenses, and web link.

3.7 Enabling Trace

Power Packet utility allows end user to enable/disable Log levels to control the logging. Logging can be controlled by modifying PPUOptions.ini file present in installation folder. When Power Packet Utility starts, it will clear the previous contents of log file & start writing fresh log. Log file PPULog.log is present in database folder.

Chapter 4 – Reset and Network ID Setting

4.1 Reset function

Push RESET/NET.ID button can reset to the factory default settings. Be careful, when you press the reset button, please remove the Ethernet cable (RJ-45cable) first, and then press the reset button. After press the reset button for less than 3 seconds and then wait the PWR LED light again.

4.2 Network ID function

The HomePlug AV powerline communication devices can form multiple logical networks over a common powerline or coax medium. There are many situations when it is desirable to add new devices to, or remove old devices from, a HomePlug AV logical network.

Push RESET/NET.ID button to accomplish using HomePlug AV Simple Connect Technology.

Network ID function trigger state conditions

“Adder state” for a device providing the NMK for an existing AVLN

“Joiner state” for a device that will join an AVLN

Pushing buttons on any two devices results in one of them becoming an “adder” and the other one a “joiner”

Four possible scenarios

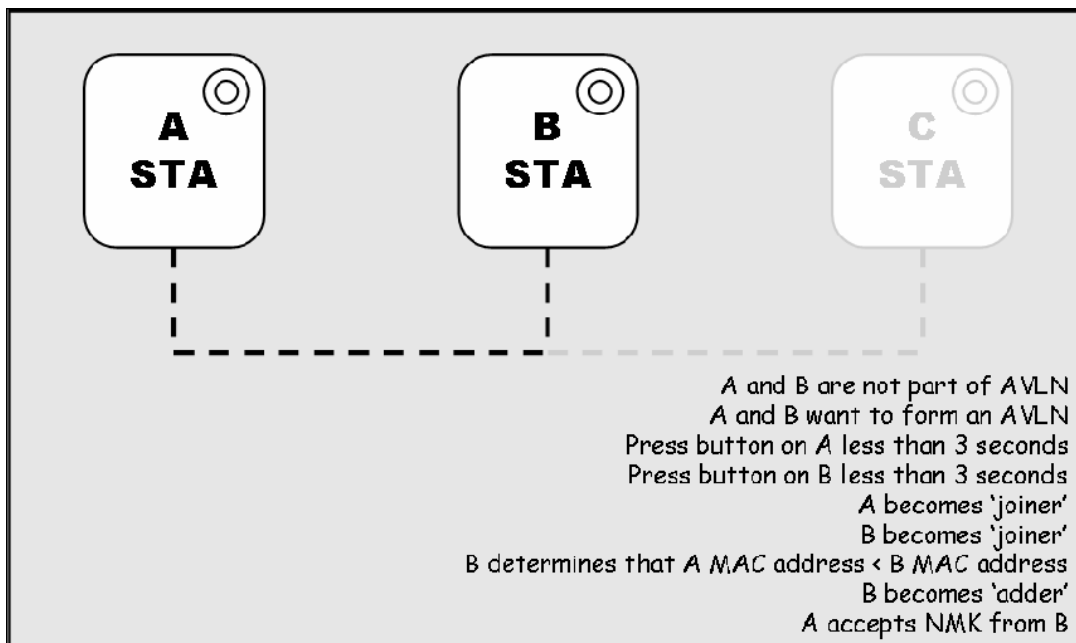
This section describes how to add and remove devices using HomePlug AV Simple Connect Technology and covers some of the technical details of how the technology works.

Case 1: Forming a Network

Two devices with different network membership key (NMK) values are connected to the same powerline. The user wants them to form a logical network.

1. Press each device **RESET/NET.ID button** for 5-8 sec till all LEDs re-flash to generate the random network password key first.
2. Press RESET/NET.ID button on the first device for less than 3 seconds.
3. Press RESET/NET.ID button on the second device for less than 3 seconds. RESET/NET.ID button on the second device must be pressed within 1 minute, by default however the interval is programmable.
4. Wait for connection to complete and the **PLC LED** will be **ON**.

The PWR LED on both devices will flash evenly at 1-second intervals until the operation succeeds or fails. It will illuminate steadily on successful completion. If an error occurs, the PWR LED on the 'adder' will flash unevenly until the RESET/NET.ID button on the 'adder' is pressed again or the 'joiner' is reset by holding the RESET/NET.ID button down for 10-15 seconds.



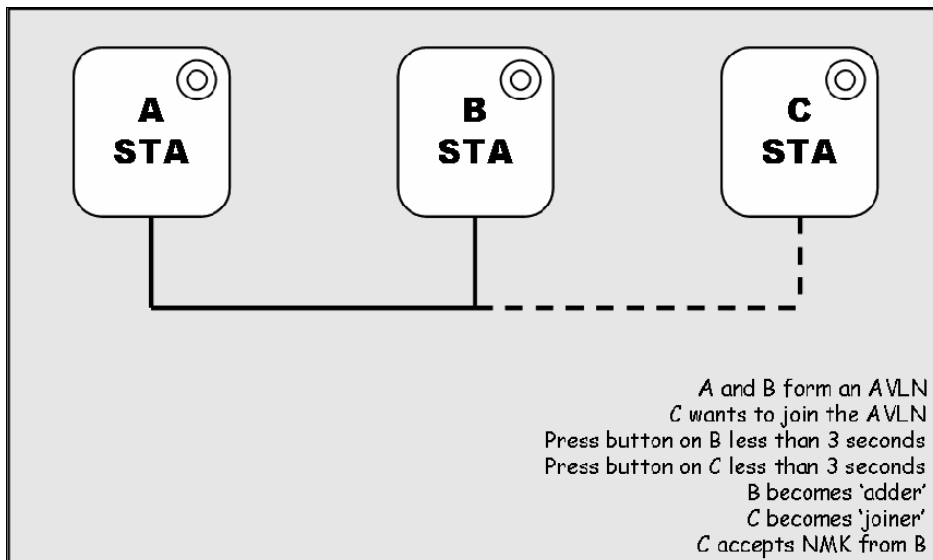
The join operation can be cancelled by pressing the RESET/NET.ID button on the first device again, for less than 3 seconds, instead of pressing RESET/NET.ID button on the second device.

Case 2: Joining a Network

In this scenario a network exists. The user wants a new device, the 'joiner', to join the network. Any device on the existing network can become the 'adder'.

1. Press the **RESET/NET.ID button** on the 'joiner' for less than 3 seconds.
2. Press the **RESET/NET.ID button** on any network device for less than 3 seconds, making it the 'adder'. You have 1 minute, by default, to press this RESET/NET.ID button.
3. Wait for connection to complete and the **PLC LED** will be **ON**.

The PWR LED on both devices will flash at 1-second intervals until the process succeeds or fails. It will illuminate steadily on success. If an error occurs, the PWR LED on the 'adder' will flash unevenly until the RESET/NET.ID button on the 'adder' is pressed again or the 'joiner' is reset by pressing the RESET/NET.ID button for 5-8 seconds, as described in Case 3:



The join operation can be cancelled by pressing the RESET/NET.ID button on the first device again, for less than 3 seconds, instead of pressing the RESET/NET.ID button on the second device.

If you press RESET/NET.ID button on three or more devices, only the first two will respond. The others will not. See Case 4 for a variation on this rule.

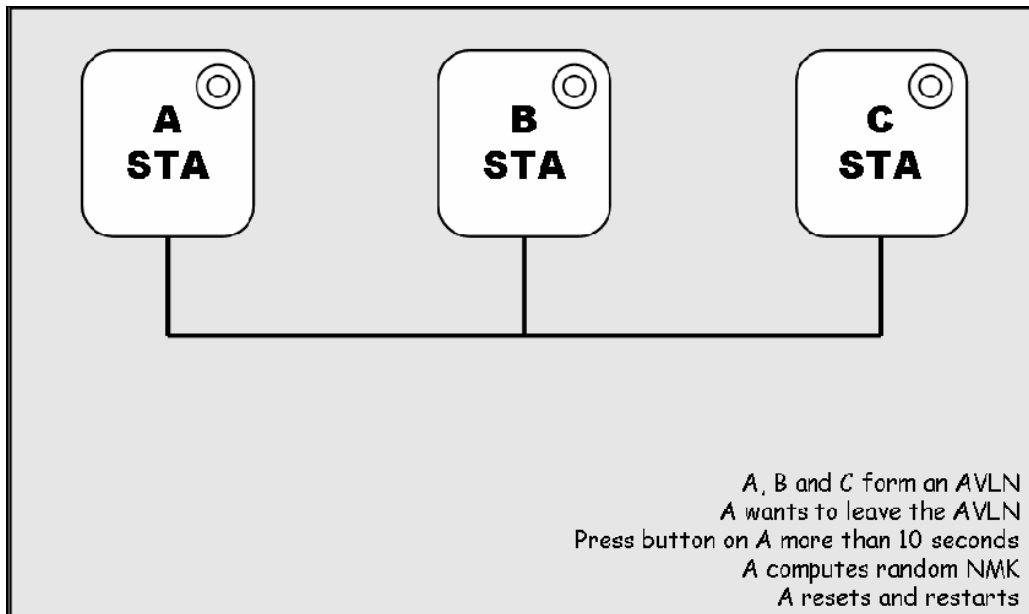
You can press the RESET/NET.ID button on the 'adder' before pressing the RESET/NET.ID button on the 'joiner'. It does not matter which is pressed first. See Case 4 for a case where the 'adder' may be pressed before the 'joiner'. Once a 'joiner' becomes a member of the network, it may become the 'adder' in the next join operation.

Case 3: Leaving a Network

A network exists. The user wants to remove one device, the 'leaver', from that network, for whatever reason. He may want to remove the device from service altogether or have it join another logical network.

1. Press the **RESET/NET.ID** button on the 'leaver' for 5-8 seconds. The device will reset and restart with a random NMK.
2. Wait for reset to complete and the **PLC LED** will be **OFF**.

The PWR LED on the 'leaver' will momentarily extinguish during reset, flash during restart then illuminate steadily. No errors can occur.



Once the process completes, the user may disconnect the device from the medium or join it to another logical network on the same medium, as described in either Case 1 or Case 2.

Case 4: Join Multiple Devices to a Network

To add several new devices to an existing network, the process in Case 2 must be repeated for each 'joiner'. A vendor may implement a mode of operation in which an 'adder' device in the network remains in the adder state for an extended period allowing additional 'joiners' to be added in turn. This lets you press the 'adder' RESET/NET.ID button once then press each 'joiner' RESET/NET.ID button in turn.

If RESET/NET.ID buttons are pressed on two or more joiners, only the first one will respond. The second will not. This makes timing important.