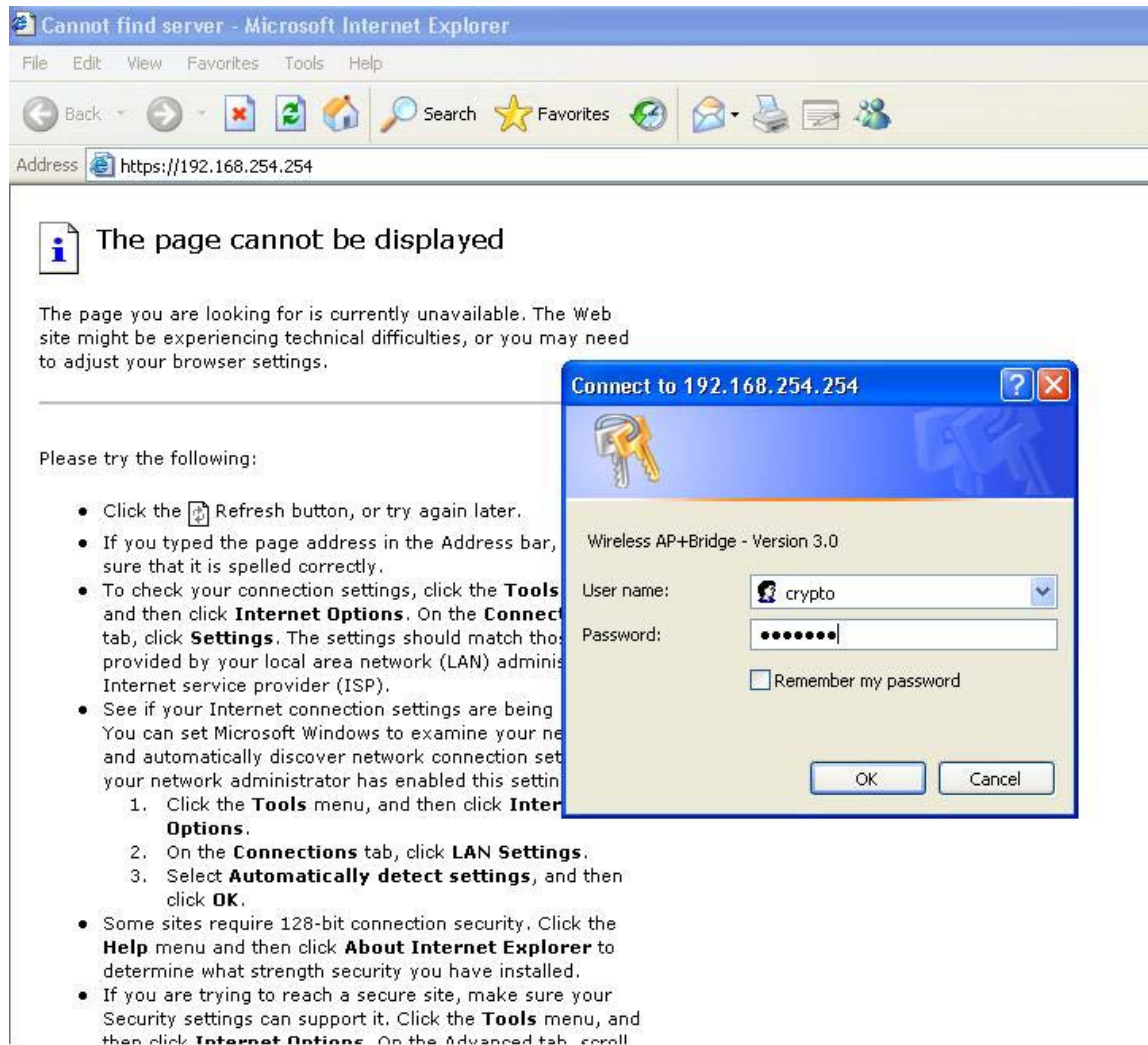




Step 1: Login to the web management from WAB-1000's WAN port.

Ex: **https://192.168.254.254**



Cannot find server - Microsoft Internet Explorer

File Edit View Favorites Tools Help

Address <https://192.168.254.254>

The page cannot be displayed

The page you are looking for is currently unavailable. The Web site might be experiencing technical difficulties, or you may need to adjust your browser settings.

Please try the following:

- Click the Refresh button, or try again later.
- If you typed the page address in the Address bar, sure that it is spelled correctly.
- To check your connection settings, click the **Tools** menu and then click **Internet Options**. On the **Connections** tab, click **Settings**. The settings should match those provided by your local area network (LAN) administrator or Internet service provider (ISP).
- See if your Internet connection settings are being updated. You can set Microsoft Windows to examine your network and automatically discover network connection settings if your network administrator has enabled this setting.
 - Click the **Tools** menu, and then click **Internet Options**.
 - On the **Connections** tab, click **LAN Settings**.
 - Select **Automatically detect settings**, and then click **OK**.
- Some sites require 128-bit connection security. Click the **Help** menu and then click **About Internet Explorer** to determine what strength security you have installed.
- If you are trying to reach a secure site, make sure your Security settings can support it. Click the **Tools** menu, and then click **Internet Options**. On the **Advanced** tab, scroll down to the **Content Advisor** section, and click **Content Advisor...**

Connect to 192.168.254.254

Wireless AP+Bridge - Version 3.0

User name:

Password:

☐ Remember my password

OK Cancel



Upgrade procedure for WAB-1000

Digital Data Communications Asia Co., Ltd.

8F, No. 41, Lane 221, Gang-Chi Rd, Nei-Hu Dis., 114, Taipei, Taiwan

[Http://www.digital-data.de](http://www.digital-data.de) ; [Http://www.level1.com](http://www.level1.com)



Step 2: click "Firmware Upgrade".

WAB-1000 Configuration - Microsoft Internet Explorer

File Edit View Favorites Tools Help

Back Forward Stop Home Search Favorites

Address <https://192.168.254.254/cgi-bin/sgateway>

System Configuration
General
WAN
LAN

Wireless Configuration
General
Security
MAC Address Filtering
Bridging
Bridging Encryption
Rogue AP Detection
Advanced

Services Settings
DHCP Server
SNMP Agent

User Management
List All Users
Add New User

Monitoring/Reports
System Status
Bridging Status
Wireless Clients
Adjacent AP List
DHCP Client List
System Log
Web Access Log
Network Activities

System Administration
Firmware Upgrade
Factory Default
Remote Logging
Reboot
Utilities

Wireless AP+Bridge

Operation Mode: Wireless AP/Bridge Mode
Username: crypto
Role: Crypto Officer
Host Name: default (192.168.254.254)

System Configuration -> General

Version: Wireless AP+Bridge - Version 3.0

Host Name:

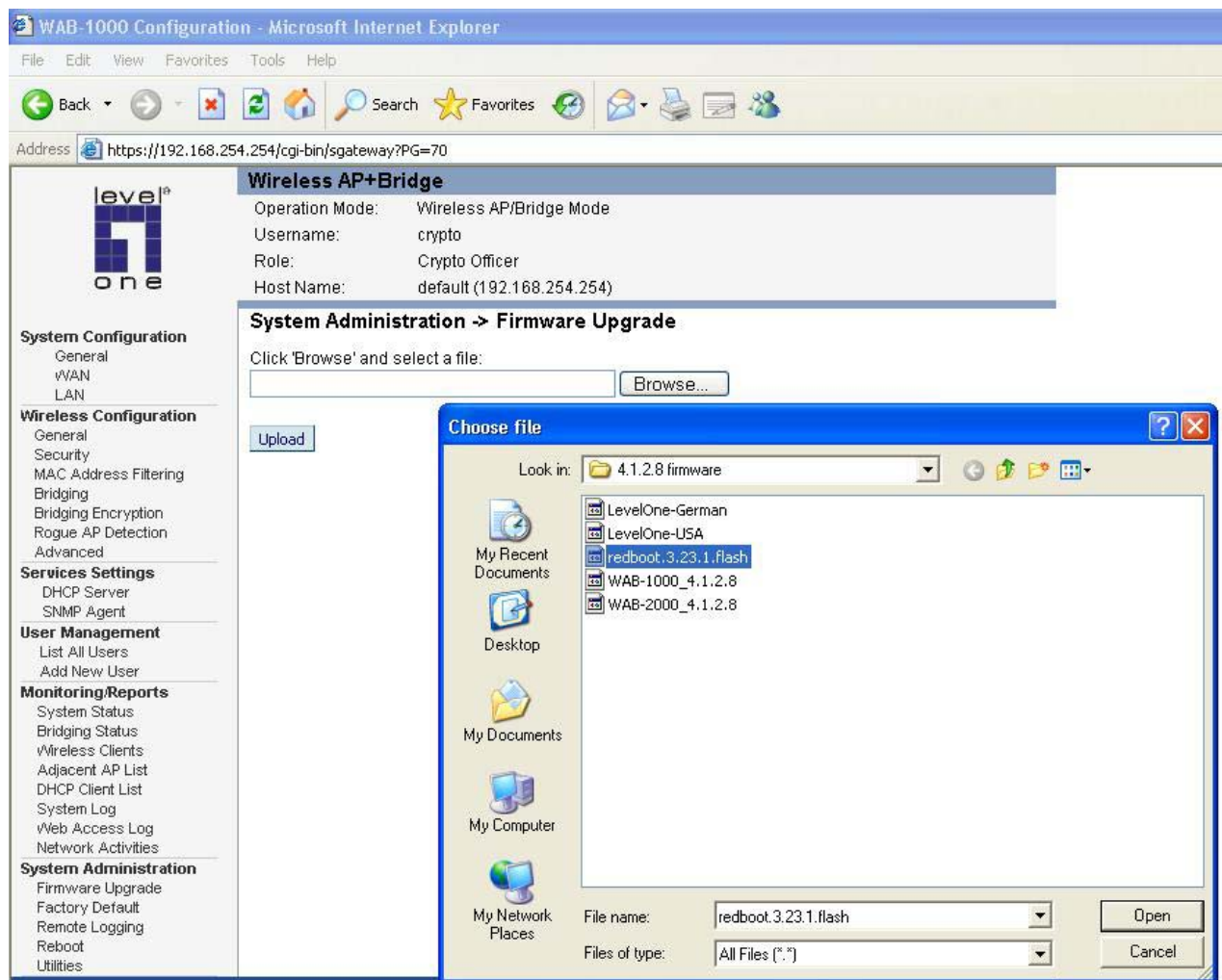
Domain Name:

System Date: 11/30/1999 (Month Day Year)

System Time: 0:09 : (Hour:Minute)



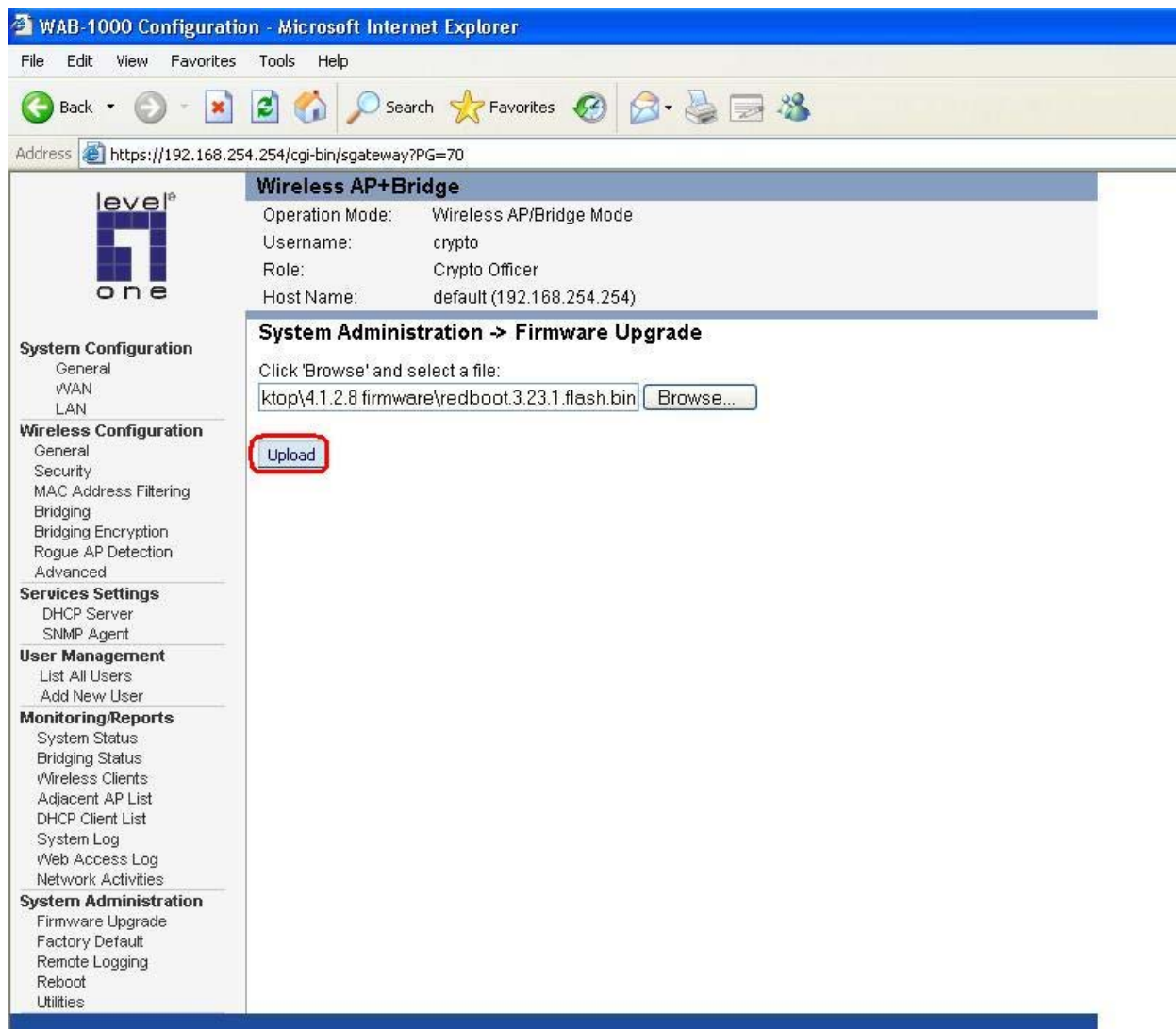
Step 3: Select boot code file “redboot.3.23.1.flash.bin”.



The screenshot shows the WAB-1000 Configuration web interface in Microsoft Internet Explorer. The browser address bar shows <https://192.168.254.254/cgi-bin/sgateway?PG=70>. The interface has a sidebar menu on the left with categories: System Configuration (General, WAN, LAN), Wireless Configuration (General, Security, MAC Address Filtering, Bridging, Bridging Encryption, Rogue AP Detection, Advanced), Services Settings (DHCP Server, SNMP Agent), User Management (List All Users, Add New User), Monitoring/Reports (System Status, Bridging Status, Wireless Clients, Adjacent AP List, DHCP Client List, System Log, Web Access Log, Network Activities), and System Administration (Firmware Upgrade, Factory Default, Remote Logging, Reboot, Utilities). The main content area is titled "Wireless AP+Bridge" and shows "Operation Mode: Wireless AP/Bridge Mode", "Username: crypto", "Role: Crypto Officer", and "Host Name: default (192.168.254.254)". Below this is the "System Administration -> Firmware Upgrade" section, which includes a "Click 'Browse' and select a file:" instruction, a "Browse..." button, and an "Upload" button. A "Choose file" dialog box is open, showing the "Look in:" dropdown set to "4.1.2.8 firmware". The file list contains: LevelOne-German, LevelOne-USA, redboot.3.23.1.flash (highlighted), WAB-1000_4.1.2.8, and WAB-2000_4.1.2.8. The "File name:" field at the bottom of the dialog is set to "redboot.3.23.1.flash" and the "Files of type:" dropdown is set to "All Files (*.*)". The "Open" button is visible.



Step 4: Upload “redboot.3.23.1.flash.bin” to WAB-1000.



WAB-1000 Configuration - Microsoft Internet Explorer

File Edit View Favorites Tools Help

Back Forward Stop Home Search Favorites Refresh Print Mail

Address <https://192.168.254.254/cgi-bin/sgateway?PG=70>

level one

System Configuration
General
WAN
LAN

Wireless Configuration
General
Security
MAC Address Filtering
Bridging
Bridging Encryption
Rogue AP Detection
Advanced

Services Settings
DHCP Server
SNMP Agent

User Management
List All Users
Add New User

Monitoring/Reports
System Status
Bridging Status
Wireless Clients
Adjacent AP List
DHCP Client List
System Log
Web Access Log
Network Activities

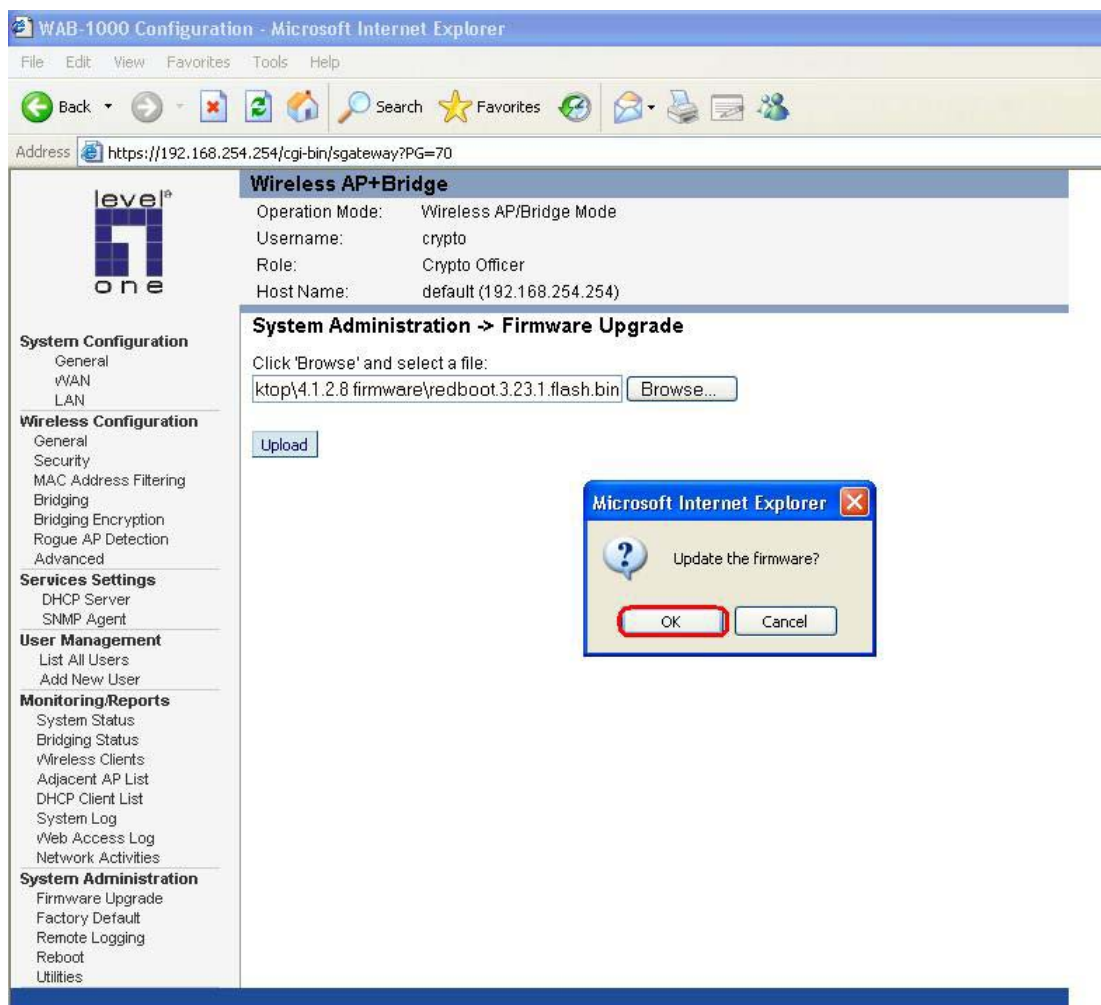
System Administration
Firmware Upgrade
Factory Default
Remote Logging
Reboot
Utilities

Wireless AP+Bridge
Operation Mode: Wireless AP/Bridge Mode
Username: crypto
Role: Crypto Officer
Host Name: default (192.168.254.254)

System Administration -> Firmware Upgrade
Click 'Browse' and select a file:



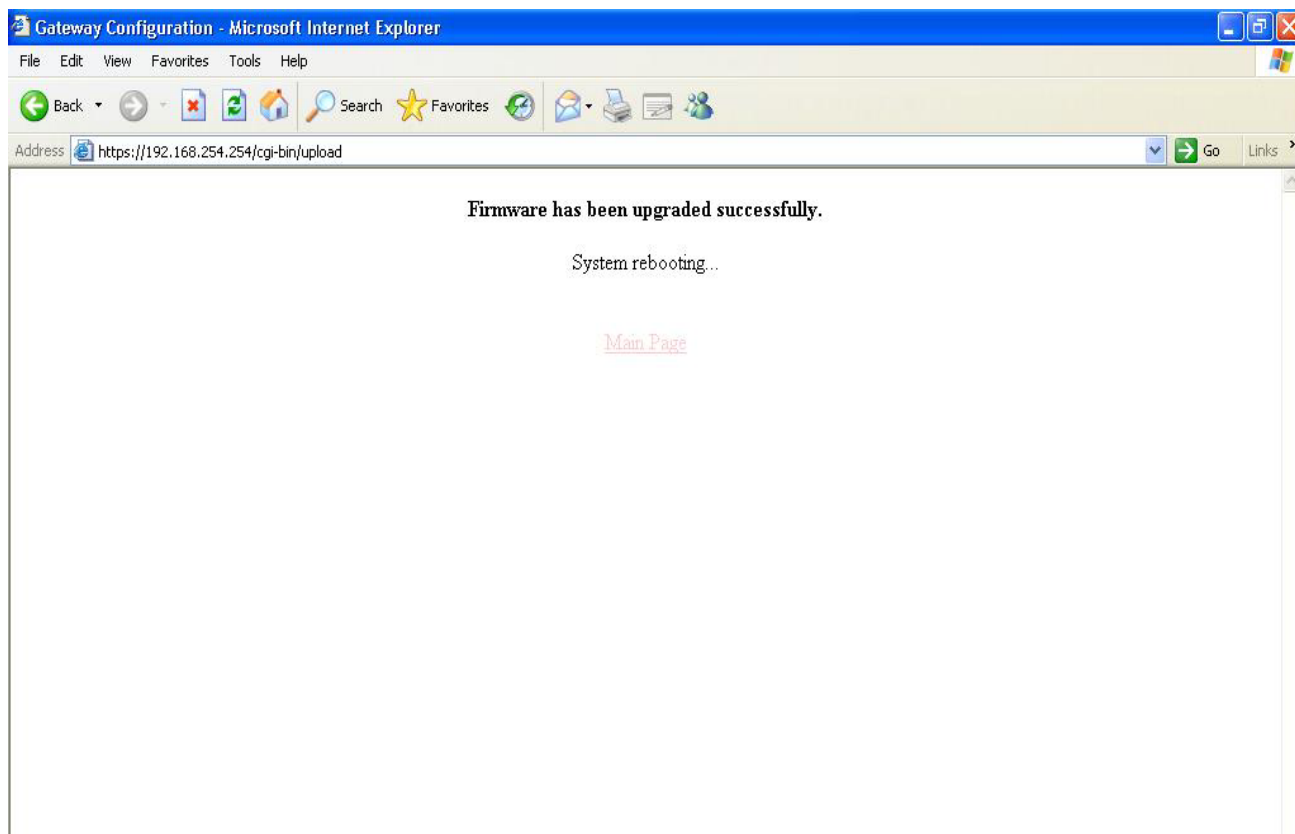
Step 5: Press OK to confirm the upgrade.





Step 6: You will see the page as below after updating the firmware successfully.

After upgrade, the default WAN IP will be **192.168.254.254**

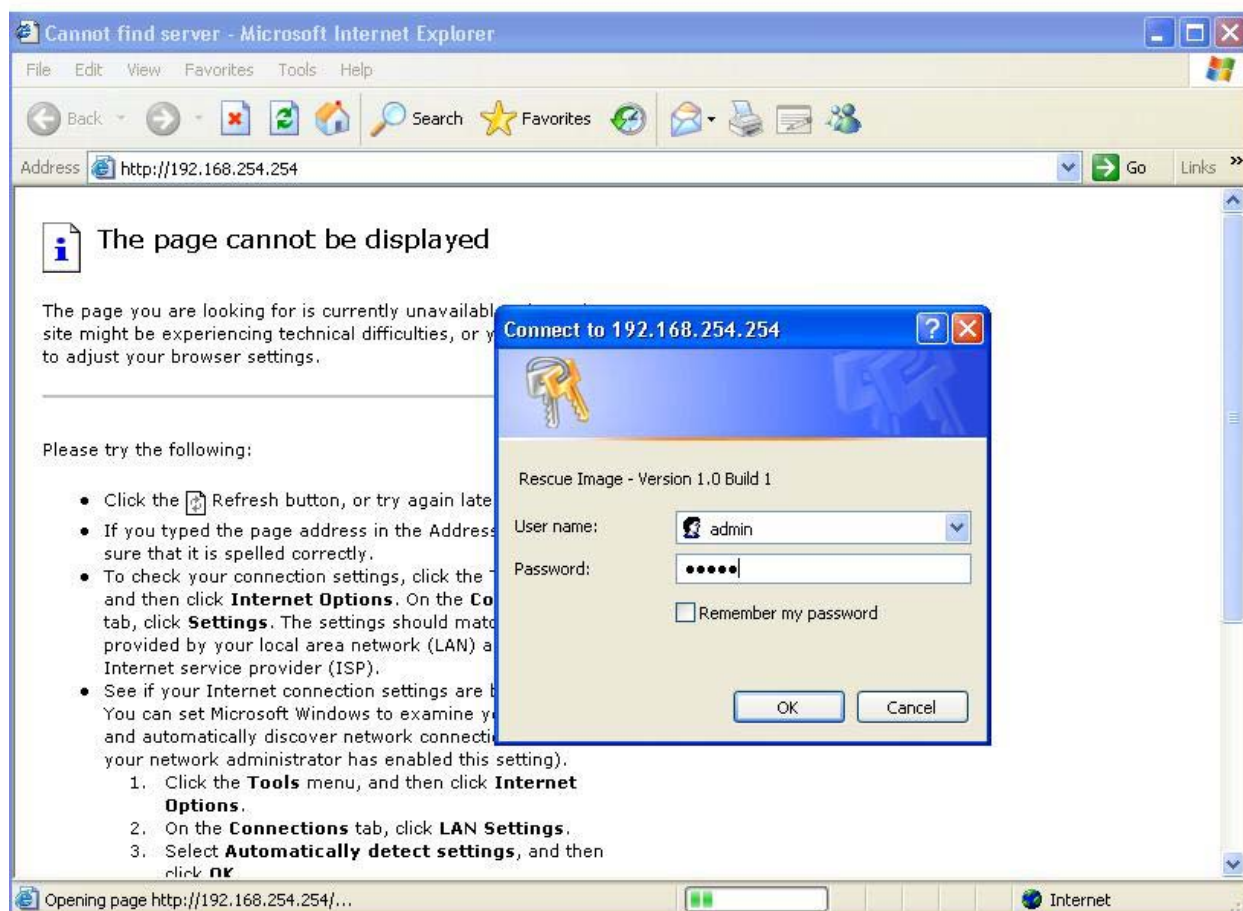




Step 7: Login to the web management again.

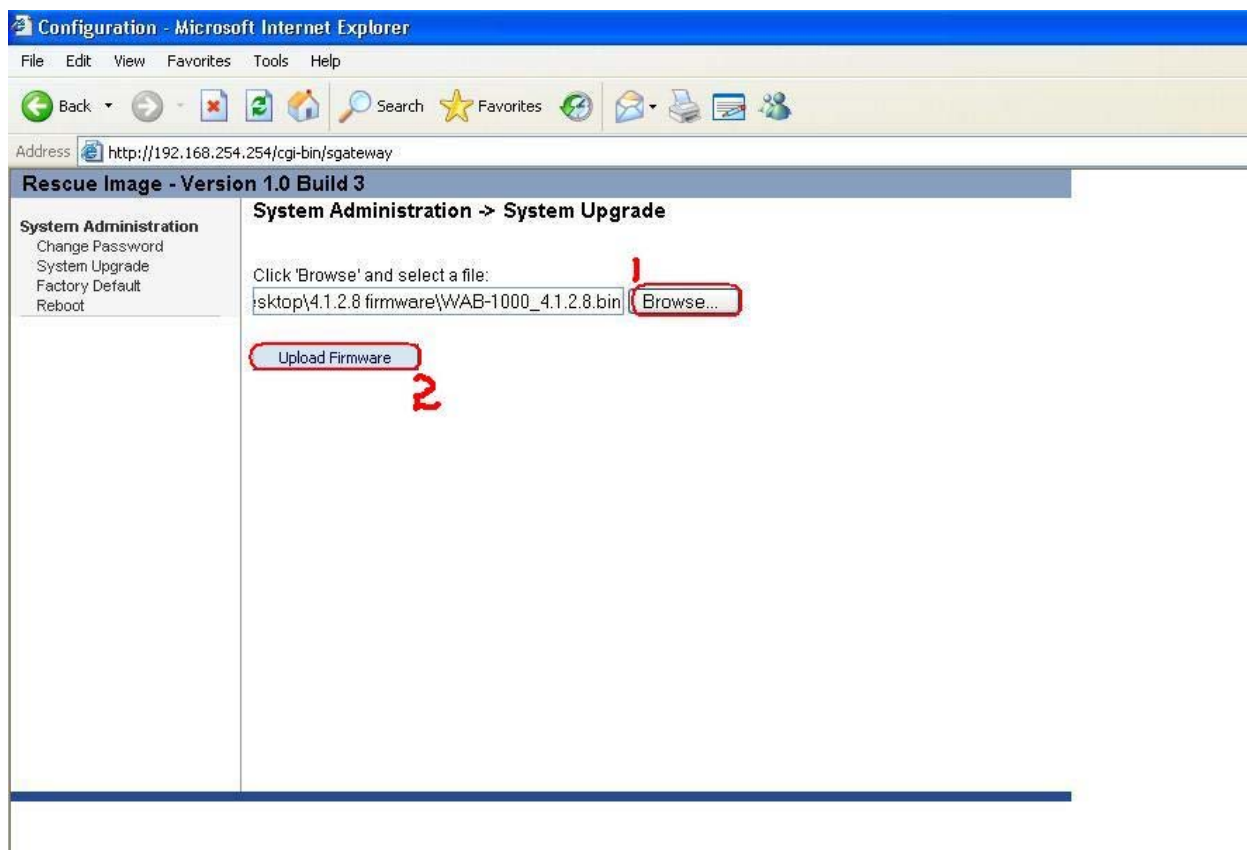
The username and password will be **admin/admin**.

Ex: <http://192.168.254.254> (not <https://192.168.254.254>)





Step 8: In system upgrade, select the firmware file: WAB-1000_4.1.2.18.bin and then press “upload firmware” button.





Upgrade procedure for WAB-1000

Digital Data Communications Asia Co., Ltd.

8F, No. 41, Lane 221, Gang-Chi Rd, Nei-Hu Dis., 114, Taipei, Taiwan

[Http://www.digital-data.de](http://www.digital-data.de) ; [Http://www.level1.com](http://www.level1.com)



Step 9: After step 8, WAB-1000 will reboot automatically.

Please use “ping 192.168.254.254” to make sure whether the WAB-1000 is ready. Go to Step 10 if the WAB-1000 does reply your “ping” well.

```
C:\WINDOWS\system32\CMD.exe
Microsoft Windows XP [Version 5.1.2600]
(C) Copyright 1985-2001 Microsoft Corp.

C:\Documents and Settings\ccd>ping 192.168.254.254 -t

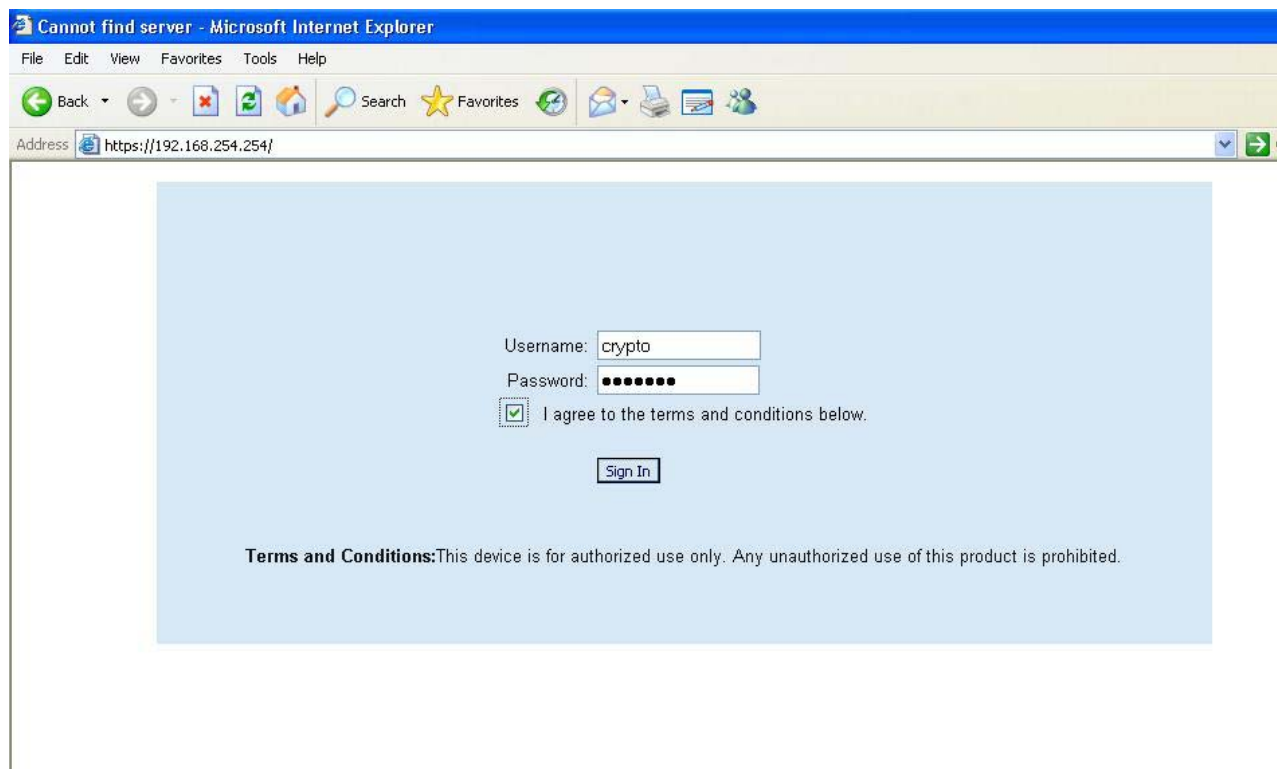
Pinging 192.168.254.254 with 32 bytes of data:

Reply from 192.168.254.254: bytes=32 time<1ms TTL=255
Reply from 192.168.254.254: bytes=32 time<1ms TTL=255
Reply from 192.168.254.254: bytes=32 time<1ms TTL=255
Reply from 192.168.254.254: bytes=32 time<1ms TTL=255
Reply from 192.168.254.254: bytes=32 time<1ms TTL=255
Reply from 192.168.254.254: bytes=32 time<1ms TTL=255
Reply from 192.168.254.254: bytes=32 time<1ms TTL=255
Reply from 192.168.254.254: bytes=32 time<1ms TTL=255

Ping statistics for 192.168.254.254:
    Packets: Sent = 9, Received = 9, Lost = 0 (0% loss),
    Approximate round trip times in milli-seconds:
        Minimum = 0ms, Maximum = 0ms, Average = 0ms
Control-C
^C
C:\Documents and Settings\ccd>
```

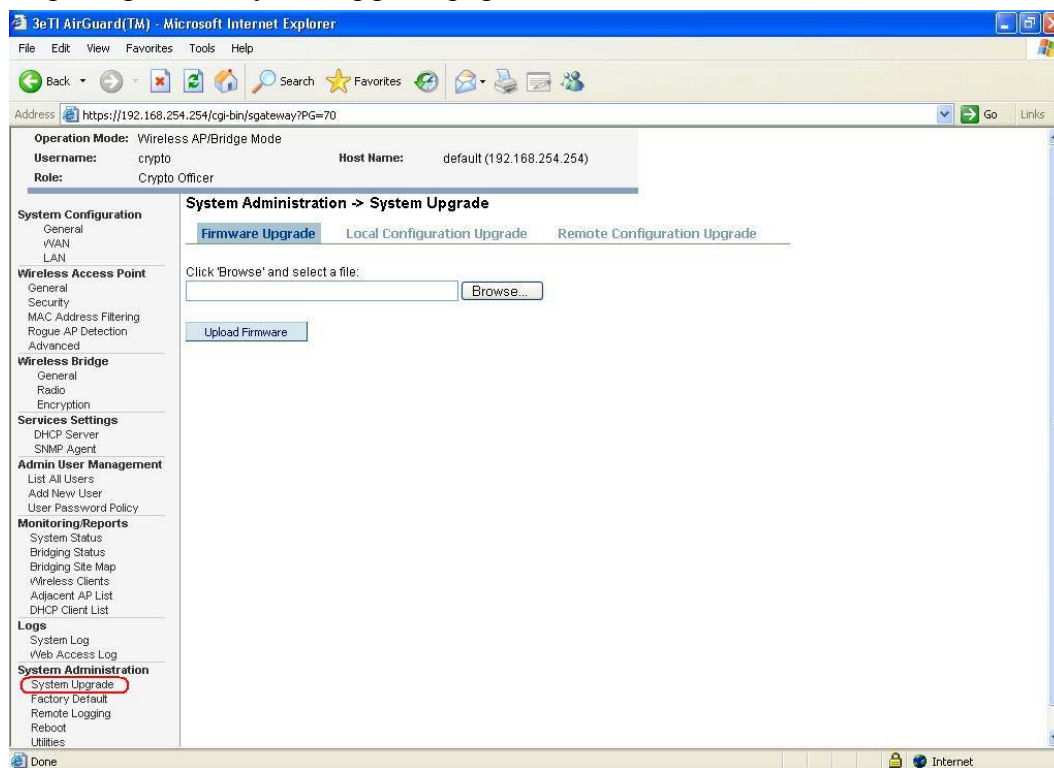
Step 10: Login to the web management by <https://192.168.254.254>

The username and password will be crypto/officer

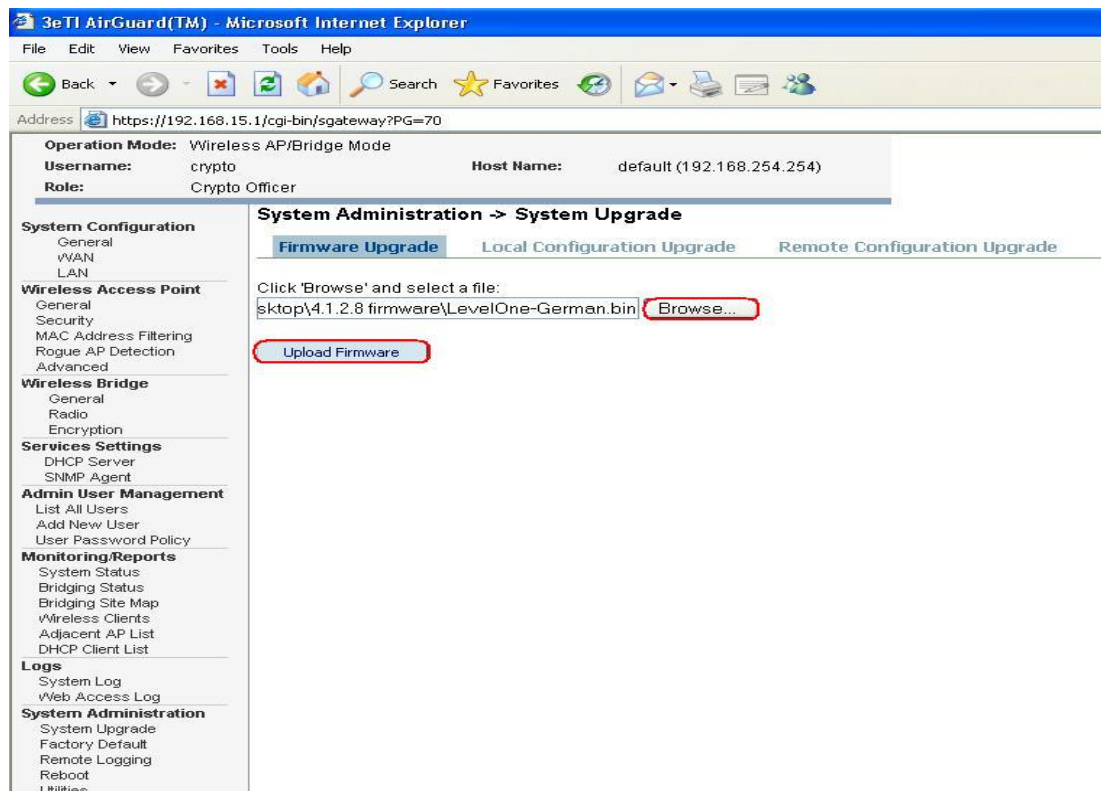




Step 11: go to the system upgrade page.



Step 12: Select the file “LevelOne-German.bin” and then upload to WAB-1000.



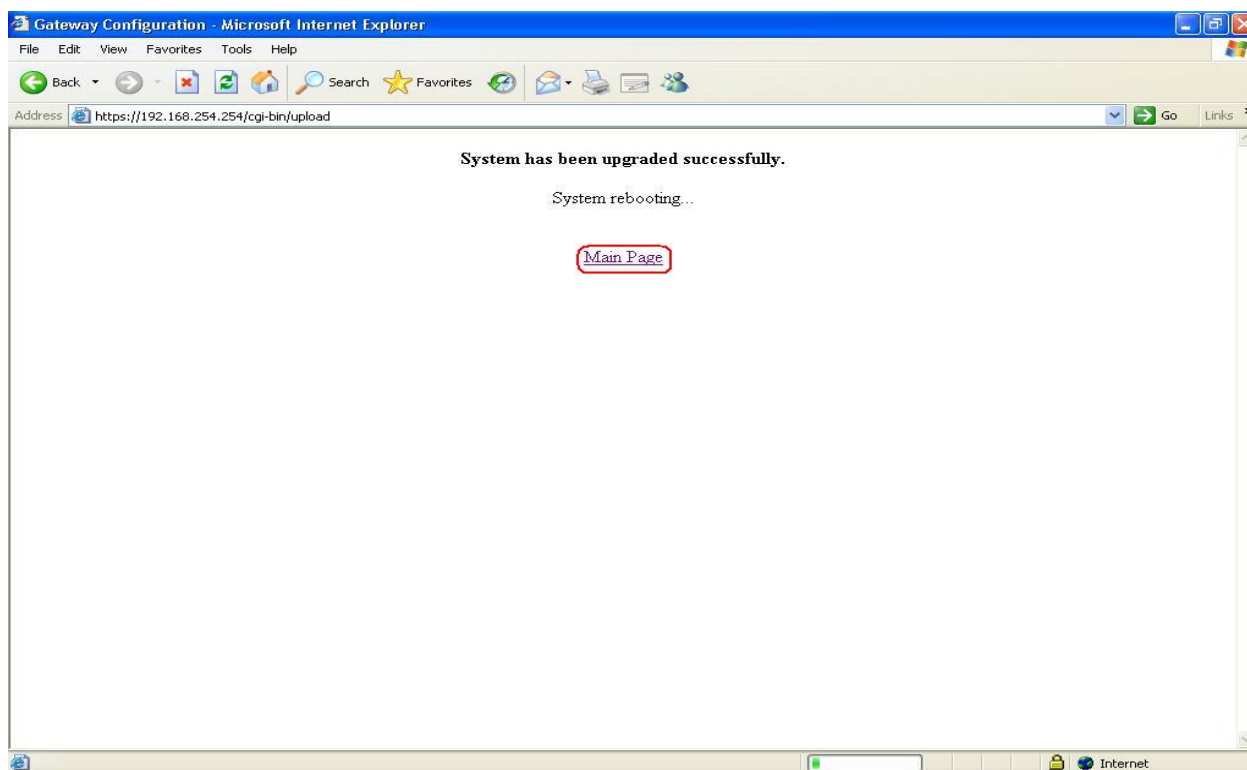


Upgrade procedure for WAB-1000

Digital Data Communications Asia Co., Ltd.
8F, No. 41, Lane 221, Gang-Chi Rd, Nei-Hu Dis., 114, Taipei, Taiwan
[Http://www.digital-data.de](http://www.digital-data.de) ; [Http://www.level1.com](http://www.level1.com)



Step 13: WAB-1000 will reboot after upgrading successfully.





Step 14: Check the firmware version is 4.1 Build 2.18

Level One - Microsoft Internet Explorer

File Edit View Favorites Tools Help

Back Forward Stop Home Search Favorites

Address <https://192.168.254.254/cgi-bin/sgateway>

System Configuration
General
WAN
LAN

Wireless Access Point
General
Security
MAC Address Filtering
Rogue AP Detection
Advanced

Wireless Bridge
General
Radio
Encryption

Services Settings
DHCP Server
SNMP Agent

Admin User Management
List All Users
Add New User
User Password Policy

Monitoring/Reports
System Status
Bridging Status
Bridging Site Map
Wireless Clients
Adjacent AP List
DHCP Client List

Logs
System Log
Web Access Log

System Administration
System Upgrade
Factory Default
Remote Logging
Reset

Wireless AP+Bridge [Log Out](#)

Operation Mode: Wireless AP/Bridge Mode
Username: crypto Host Name: default (192.168.254.254)
Role: Crypto Officer

System Configuration -> General

Version: **WAB-1000 - Version 4.1 Build 2.8**

Description: default location

Host Name: default

Domain Name: default

System Time: Date: 01/01/2005 Time: 00:06

☒ Manual

New Date: / / (Month / Day / Year)

New Time: : : (Hour:Minute)

☐ From NTP Server

Time Zone: (GMT-05:00) Eastern Time (US & Canada)

Time Server 1:

Time Server 2:

NIST servers: time-a.nist.gov, time-b.nist.gov, time.nist.gov

Login Banner:

Done