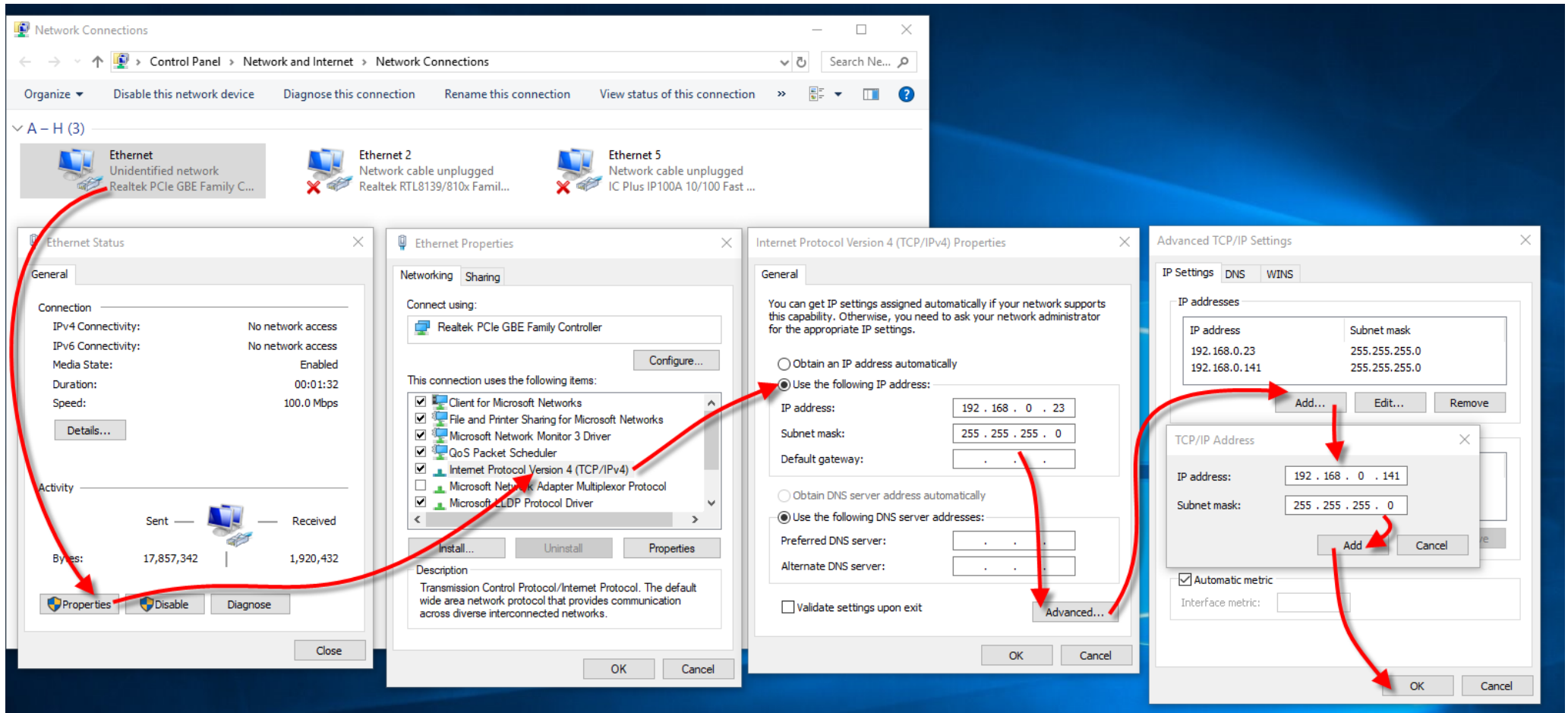


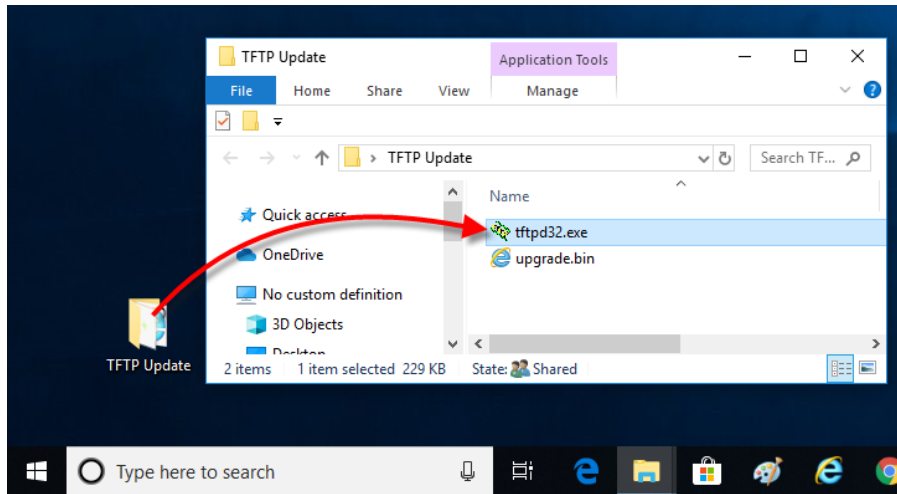
# How to update firmware through TFTP

1. Computer TCP /IPv4 Setting 192.168.0.23 / 255.255.255.0 and 192.168.0.141/ 255.255.255.0

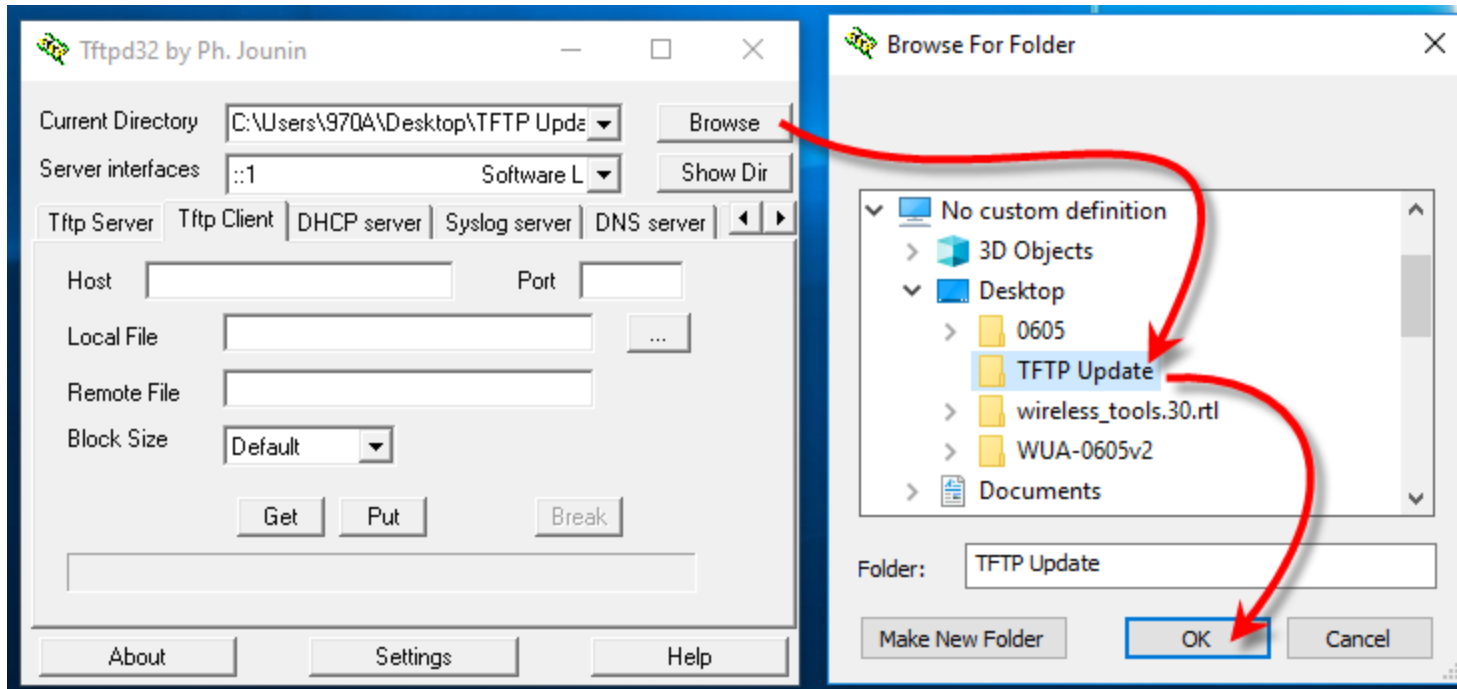


2. Create a folder, put TFTP tools and upgrade.bin, these two files in the same folder.

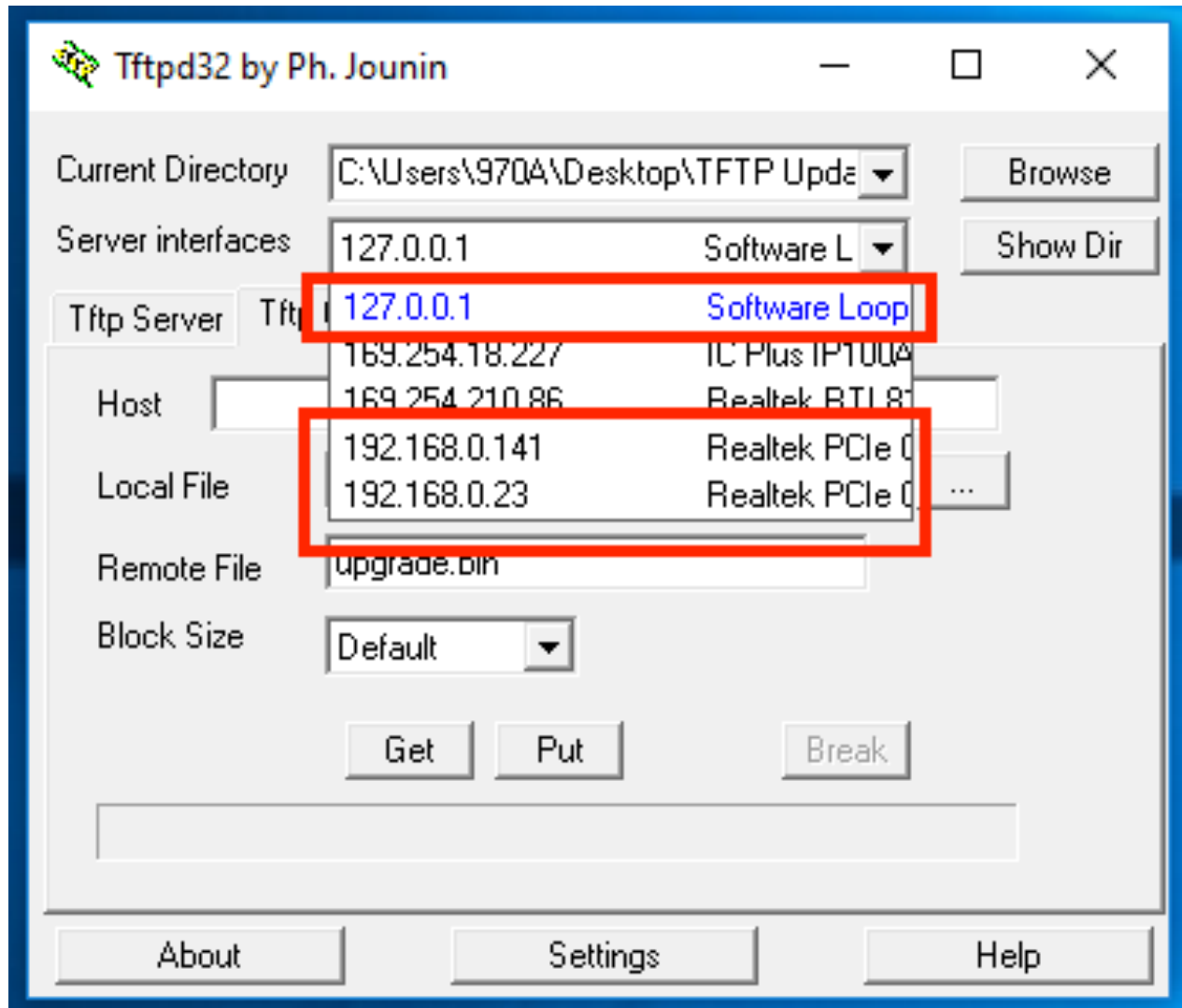
**Note:** only TFTP filename upgrade.bin is accepted.



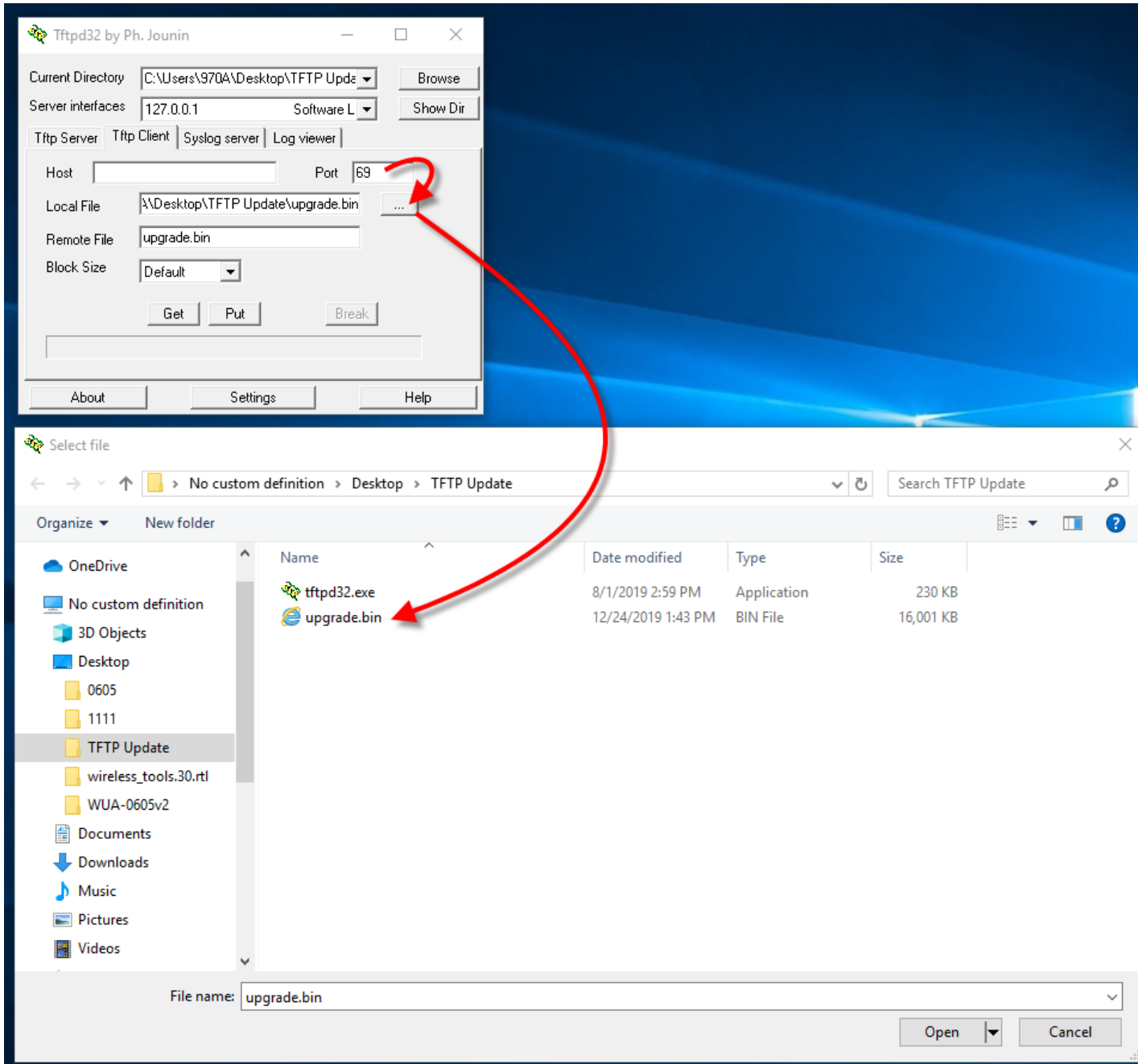
3. Select the folder storage path



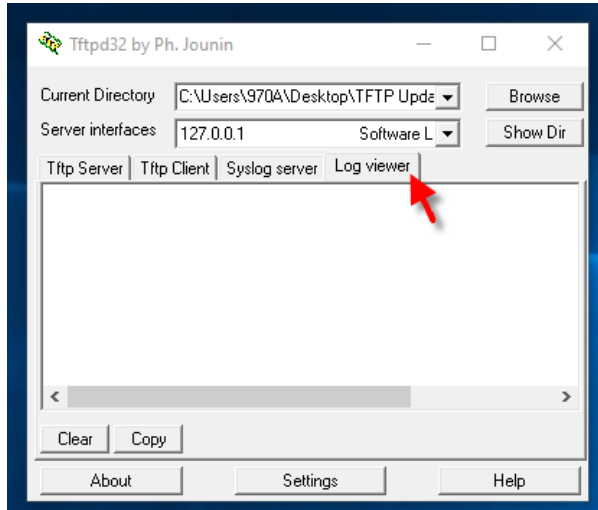
4. Check displayed with 127.0.0.1 and 192.168.0.141 and 192.168.0.23



5. Enter 69 port and click load file

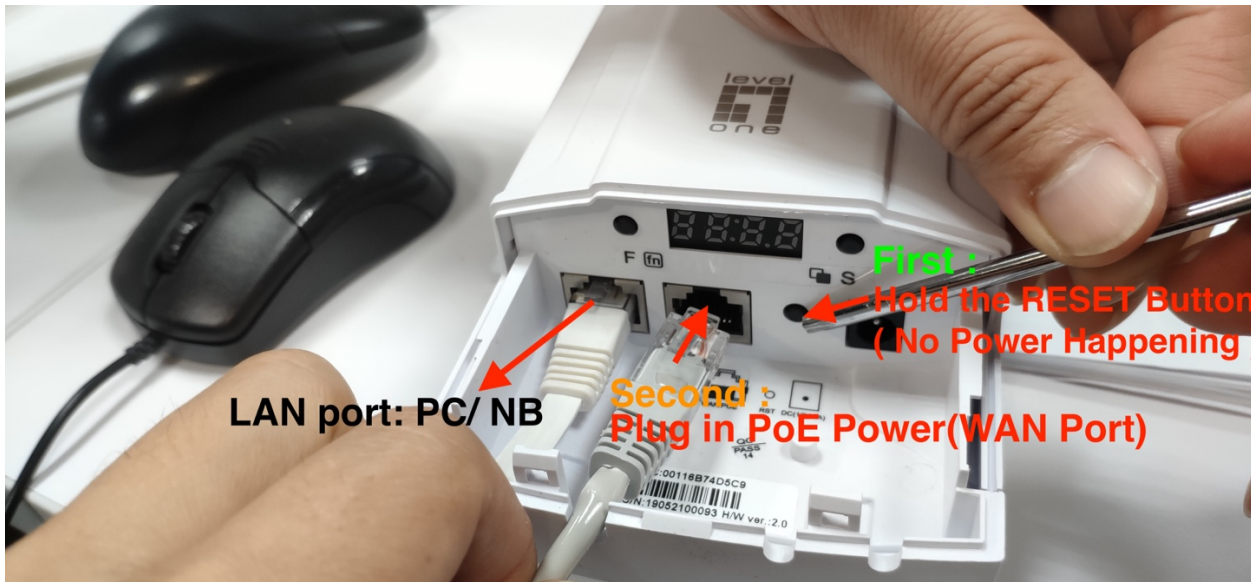


## 6. Click to Log viewer



7. Keep press the RESET button (No power happening), Do not release , Next can insert the power.  
Wait until the only power light stays on before releasing the button (about 10 seconds)

- PoE in (IEEE 802.3at)



- 12V DC in



8. TFTP Client will broadcast automatically, automatically update firmware, the process time will take about 6 minutes

