



LevelOne

PLI-1010

HomePlug USB Adapter

User's Manual

Table of Contents

Check your package contents	2
Physical Description	2
Software Installation	3
Using the Configuration Utility	8
Introduction	8
Running the utility	8
Device dialog screen	9
Network dialog screen	11
Security dialog screen	12
Advanced dialog screen	13

Check your package contents

- PLI-1010 HomePlug USB Adapter
- One USB Cable
- Installation CD
- QIG

Physical Description

LNK - Indicate connected with powerline network

ACT - Indicate powerline activity

COL - Flash when a collision is detected



USB – The USB jack is where you will connect the USB cable



Software Installation

Insert the Installation CD-ROM into the computer's CD-ROM drive. The setup utility should run automatically. If it does not, click the start button and choose Run. In the box that appears, enter D:\setup.exe (Where D is the letter of your CD drive).

The CD will launch an installation utility then follow the instruction in the installation utility.

Click **"Next"**



Input “**User Name/Organization**” and click “**Next**” to move on to the next step.

LevelOne PLI-1010 Utilities - InstallShield Wizard

Customer Information
Please enter your information.

User Name:
USER

Organization:
NONE

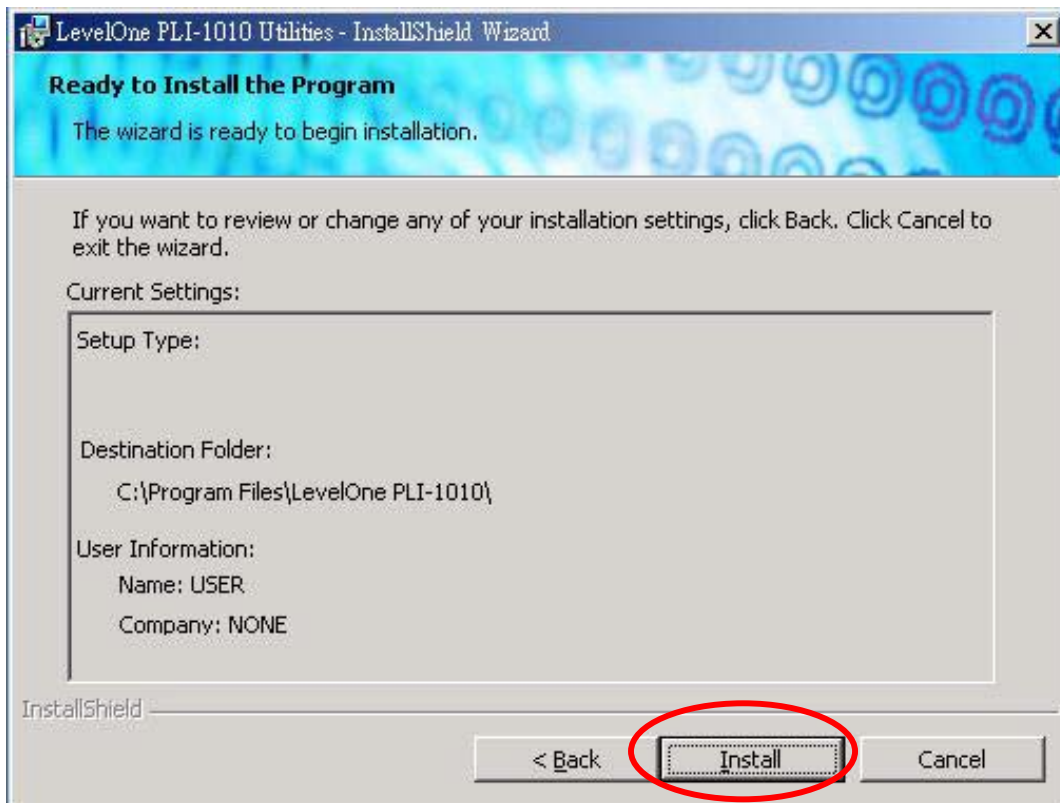
Install this application for:

- ☒ Anyone who uses this computer (all users)
- ☐ Only for me (USER)

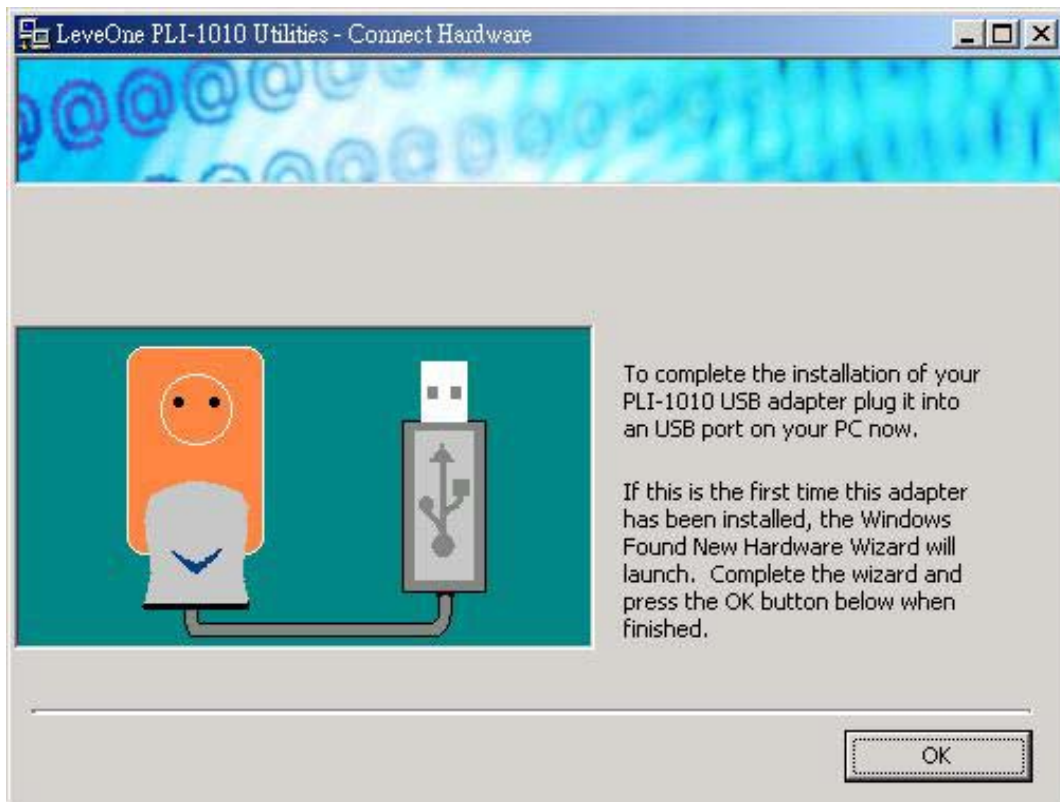
InstallShield

< Back **Next >** Cancel

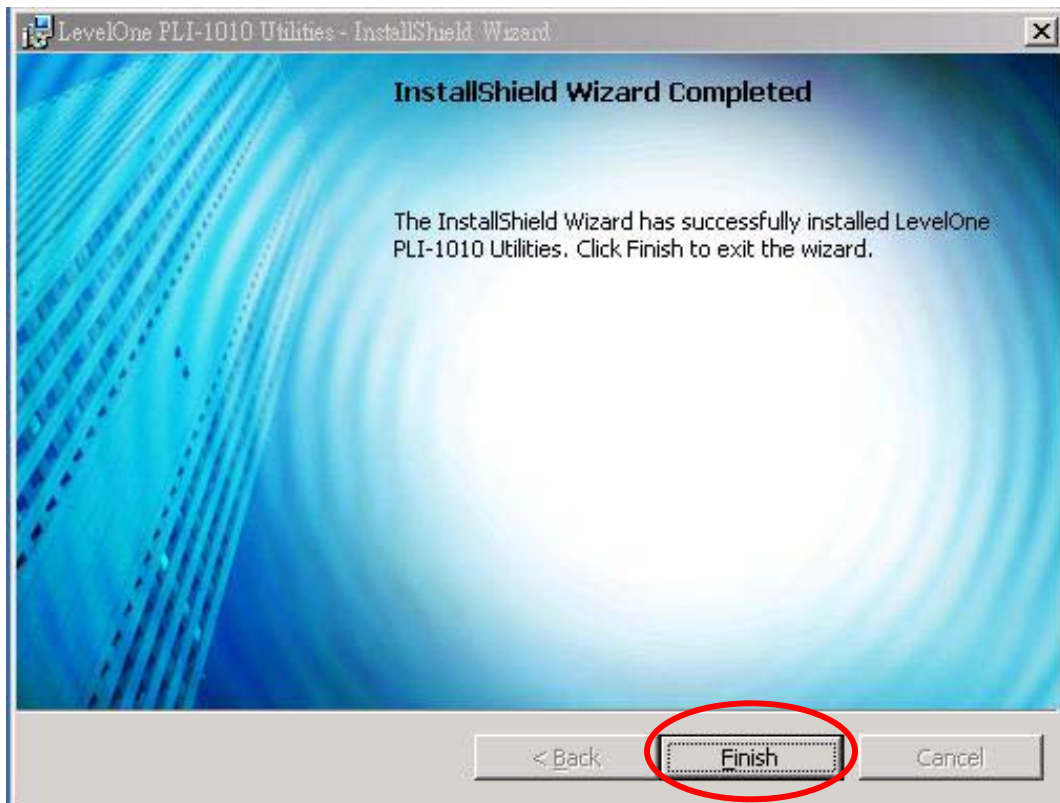
Select **“Install”** to start the installation.



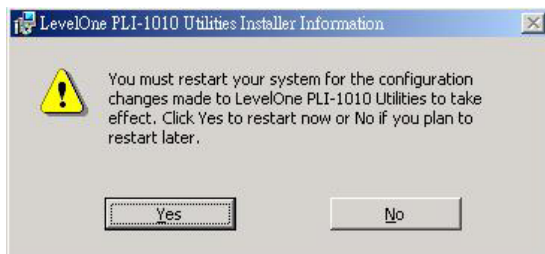
When prompted by the install utility, Plug in the powerline AC prong.
Plug the AC prong into an AC outlet.
Plug the supplied USB cable into the USB jack and an available USB port on your PC.
<Note> Do not plug the device into a UPS or power strip with surge protection.



Click **“Finish”** to exit the installation utility.



You may be asked to restart your computer. Click **“Yes”** to restart now, or click **“No”** to restart later.



The installation of PLI-1010 complete.

Using the LevelOne PLI-1010 Utility

Click the “LevelOne PLI-1010 Utility ” icon to run the utility.



Introduction

The LevelOne PLI-1010 Utility for powerline networking enables the user to find devices on the powerline network, measure data rate performance and ensure privacy by setting a user defined network private password.

This utility gives you the capability to set up a network password on the local device Connected to the computer where the utility is running. It gives you as well, through the advanced option, the capability to set up a network password remotely on other devices through the power line.

Before running this utility, make sure that a powerline device is properly installed and connected to your computer.

Running the utility

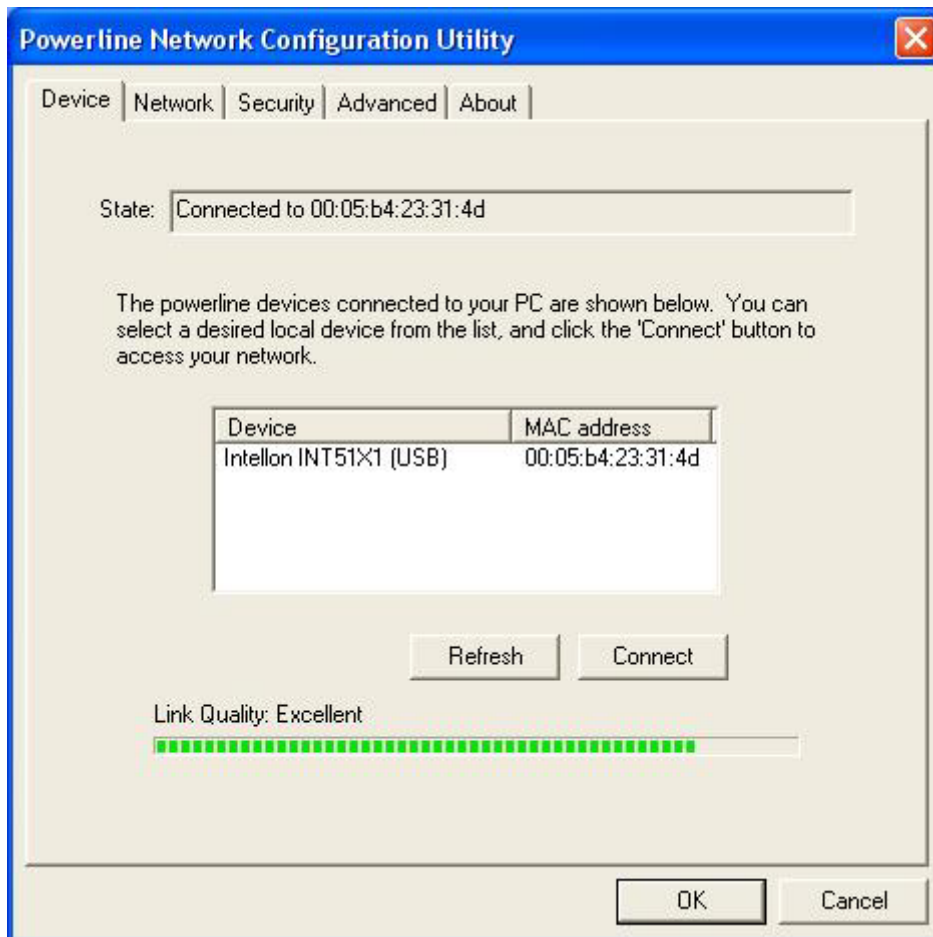
To run the utility, double click the LevelOne PLI-1010 Utility icon on your desktop.

The wizard has five different dialog screens options accessible through the following tabs: Device, Network, Security, Advanced and About. In the coming sections, we will explain the purpose and the functionality of each of them.

Device dialog screen

The **Device** dialog screen provides a list of your powerline devices connected to the computer where the utility is running and average data rate performance of your powerline network.

Initially, the wizard starts the **Device** dialog screen.



Once the analysis is done, a screen similar to the following figure.

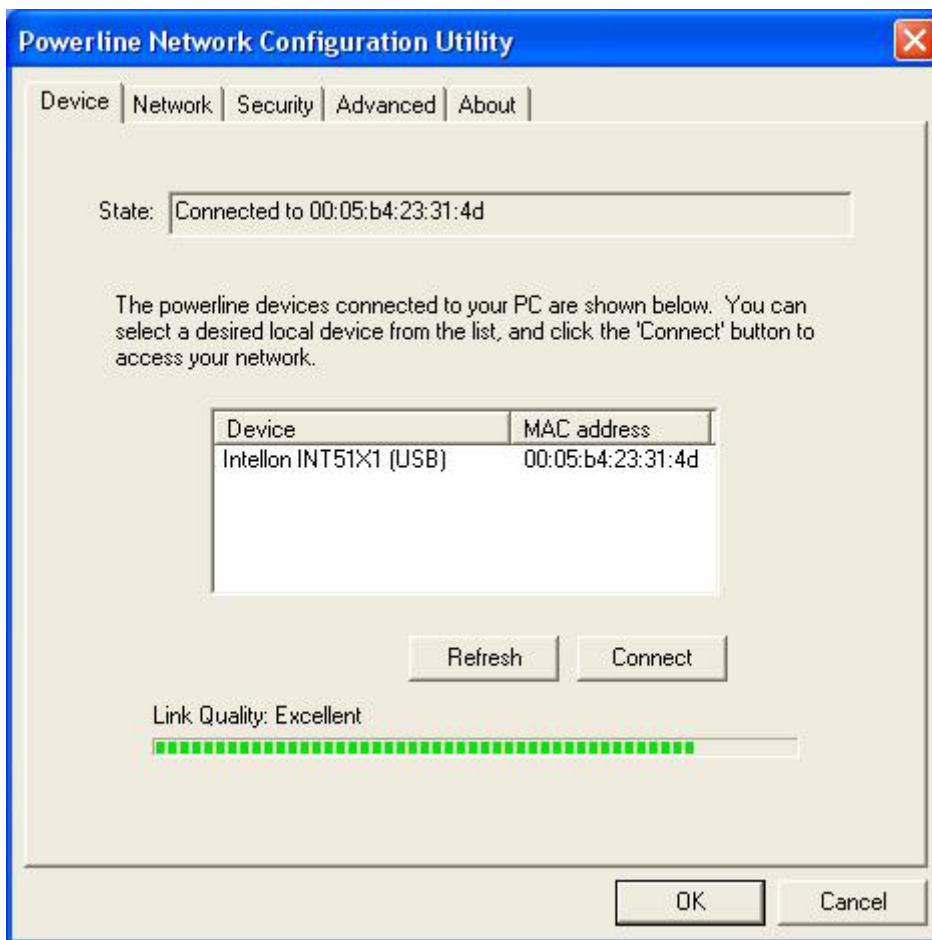
In the text list box, it reports back all powerline devices found that are locally connected to the computer where the utility is running.

In most cases, one device only is listed.

In case you have more, click on one of them and hit **Connect**. Make sure that the state box indicates that your PC is connected to the same device. Now you are ready to manage the powerline network connected to this device, ensure its privacy and measure its data rate performance.

Press **Refresh** button to refresh the search of the powerline devices connected to your computer.

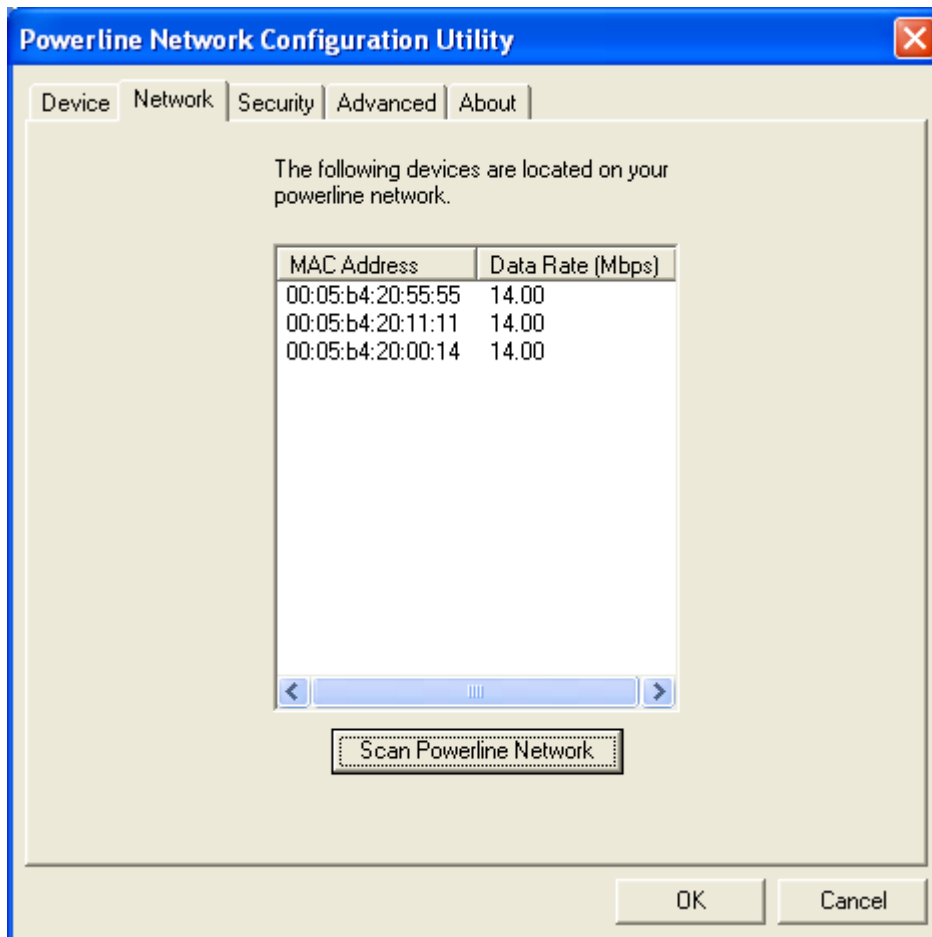
The progress bar will change into a status bar indicating the network average data rate.



Network dialog screen

The Network dialog screen provides detailed information about your powerline network. The test list box shows all powerline devices found on your powerline network identified by their MAC addresses. A second column indicates their data rate measurements in Mbps.

Press Scan Powerline Network button to refresh the listed information.



Note:

In case a powerline device in your home is not listed in the screen above, make sure that its network password has not been made private previously with a different password than your current private network password.

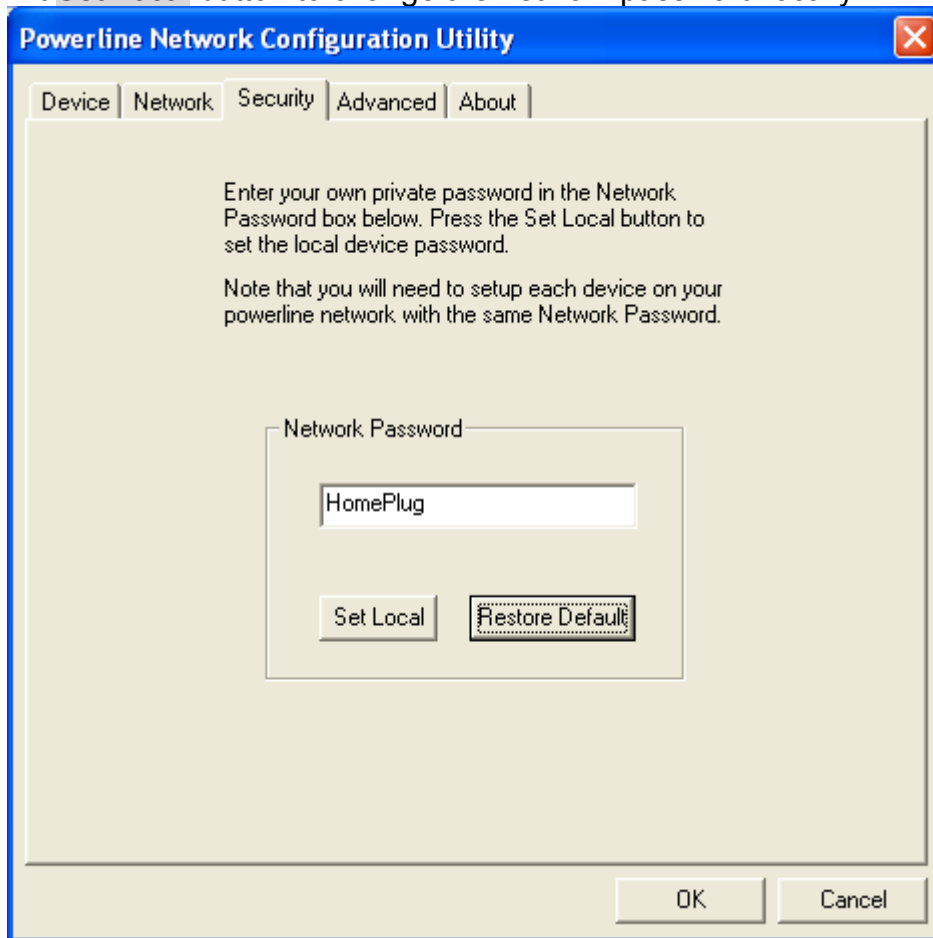
You can always reset a powerline network password to a universal one by running the **Configuration utility** on the PC attached to this device and choose "**HomePlug**" as the network password.

Security dialog screen

All powerline devices are shipped using “**HomePlug**” as a network password. The Security dialog screen allows you to change this network password and set your own private password and apply it to the powerline device connected to the computer where the utility running.

Hit **Restore default** button to restore the original network password “**HomePlug**” and apply it locally.

Hit **Set Local** button to change the network password locally.



Note:

Your private network password must have between 4 and 24 characters. The password is case sensitive. The password can include any letters of the alphabet, number or punctuation marks. Remember this password as it will be needed when adding other devices to the network later.

Advanced dialog screen

The **Advanced** dialog screen allows you to set up a network password remotely on other powerline devices through the powerline.

Type your private network password into the **Network Password** text box.

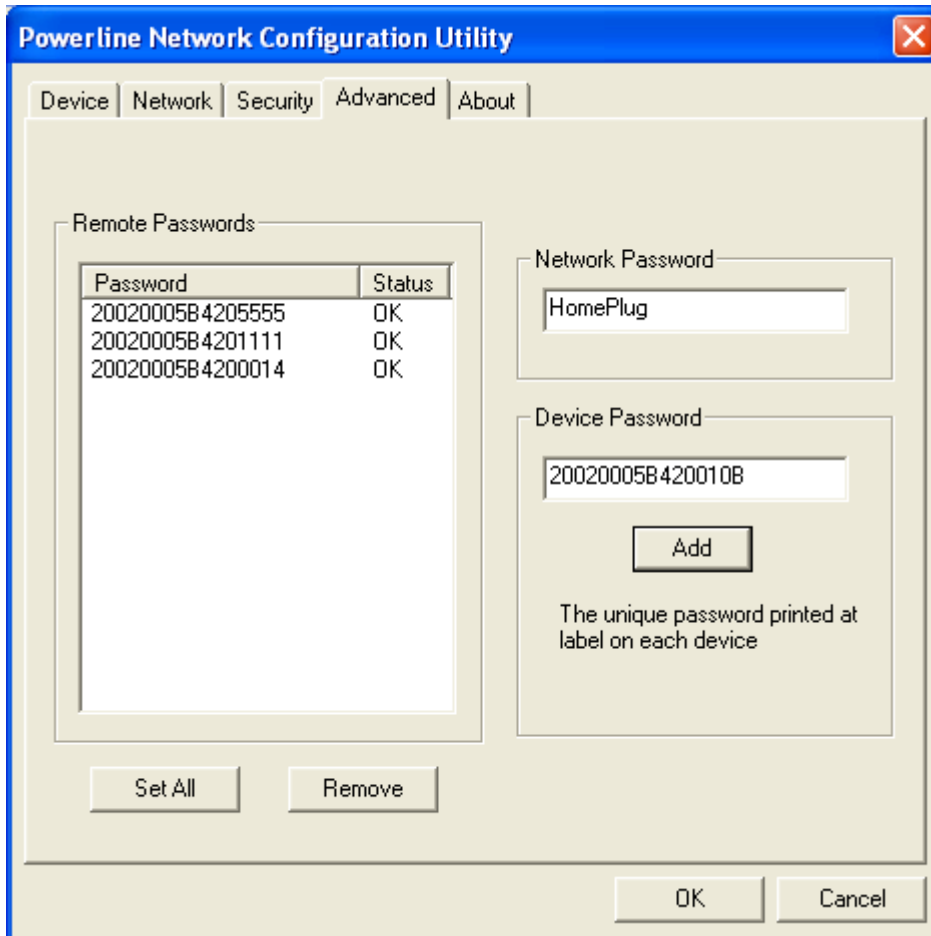
The other devices on the network with powerline capabilities will have a different password printed on either the box itself. Find the passwords for all devices you want to manage and type them one by one into the **Device Password** text box and hit **Add**. This will add the passwords to **Remote Passwords** text list box and set them to the currently defined Network Password.

Note: The device must be present on the powerline in order for the password to be confirmed and added to the **Remote Passwords** list.

The **Status** indicates whether each device is successfully set to the **Network Password**. “OK” indicates success while “Fail” indicates a failure.

Hit **Set All** to apply your private network password to all devices that are listed in the **Remote Passwords** text list box and to your local device connected to the computer where the utility is running as well.

Select a password and hit **Remove** to remove it from the list.



The image shows a screenshot of the "Powerline Network Configuration Utility" dialog box. It has a blue title bar with the text "Powerline Network Configuration Utility" and a close button. Below the title bar are five tabs: "Device", "Network", "Security", "Advanced", and "About". The "Advanced" tab is currently selected. The main area of the dialog is divided into two sections. On the left, under the heading "Remote Passwords", there is a table with two columns: "Password" and "Status". The table contains three rows of data. On the right, there are two text input fields. The top one is labeled "Network Password" and contains the text "HomePlug". The bottom one is labeled "Device Password" and contains the text "20020005B420010B". Below the "Device Password" field is an "Add" button. Below the "Add" button is a line of text: "The unique password printed at label on each device". At the bottom of the dialog, there are four buttons: "Set All", "Remove", "OK", and "Cancel".

Password	Status
20020005B4205555	OK
20020005B4201111	OK
20020005B4200014	OK

Network Password: HomePlug

Device Password: 20020005B420010B

Add

The unique password printed at label on each device

Set All Remove OK Cancel