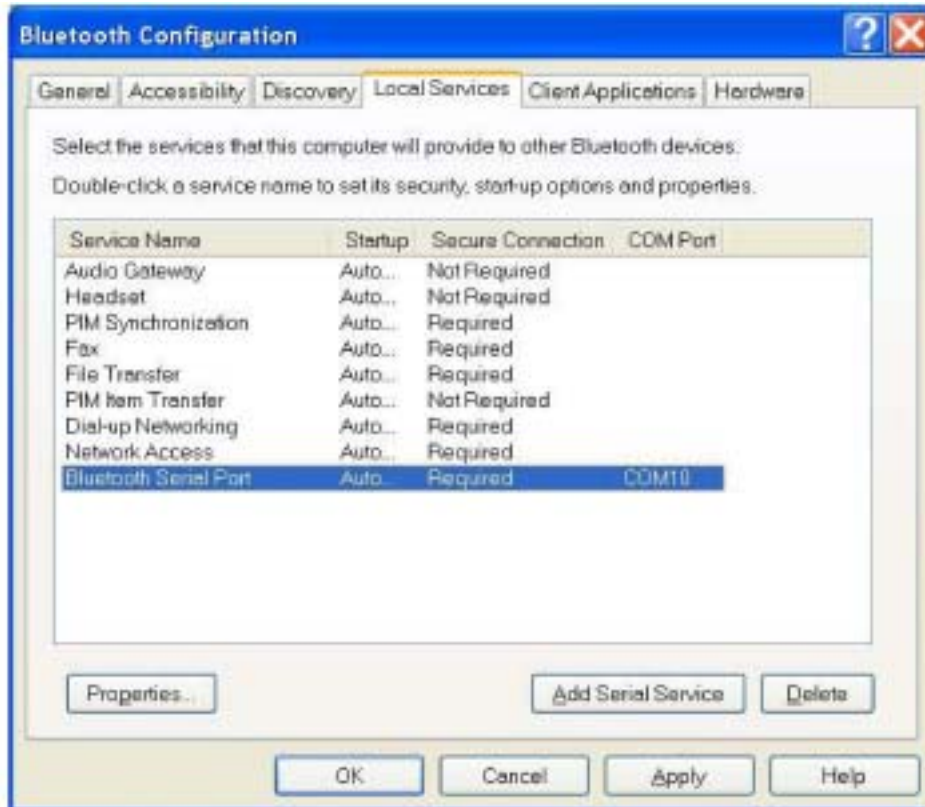


How to sync with Nokia 7650 via Nokia PC Suite for 7650

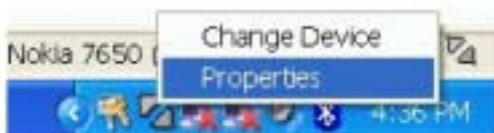
Note: Please make sure you are using Nokia PC Suite for 7650 and not other versions of PC Suite. You can download the program from www.nokia.com/cda1/0,1080,2015,00.html

(1) Install Nokia PC Suite for 7650.

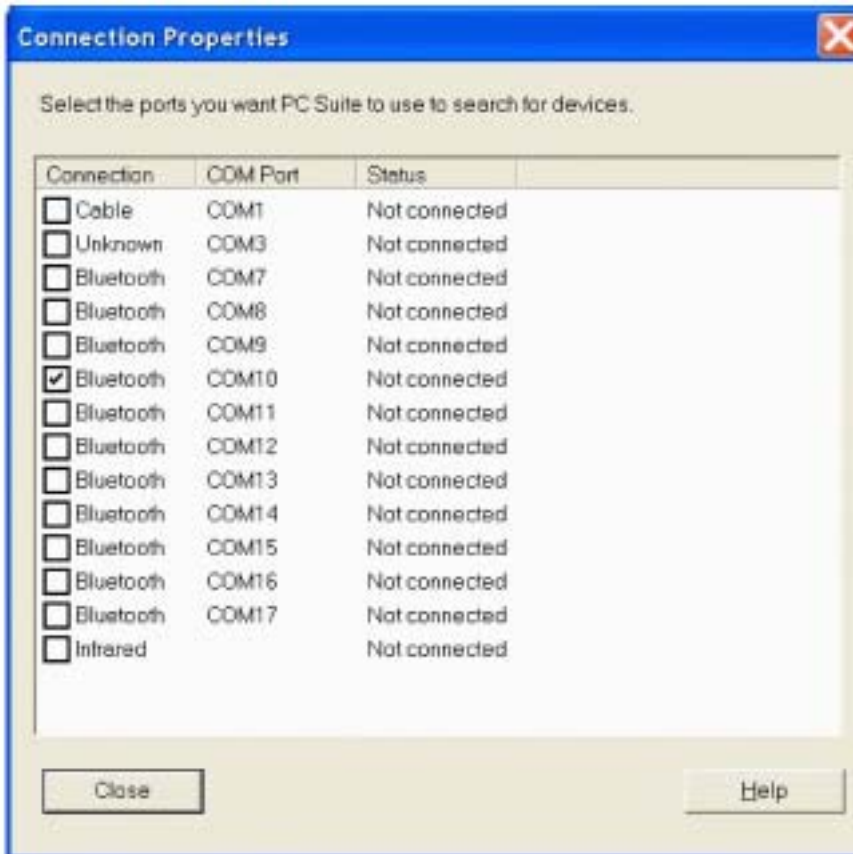
(2) Start up Bluetooth software, note the COM port used by your system (check the "Bluetooth Serial Port" under "Local Services" tab in "Bluetooth Configuration, e.g. COM10).



(3) Right click mRouter on the task bar and select Properties.



(4) Tick the COM port from step (2) then click "Close". If you are still unsure of which one to select, just tick every Bluetooth COM ports first.

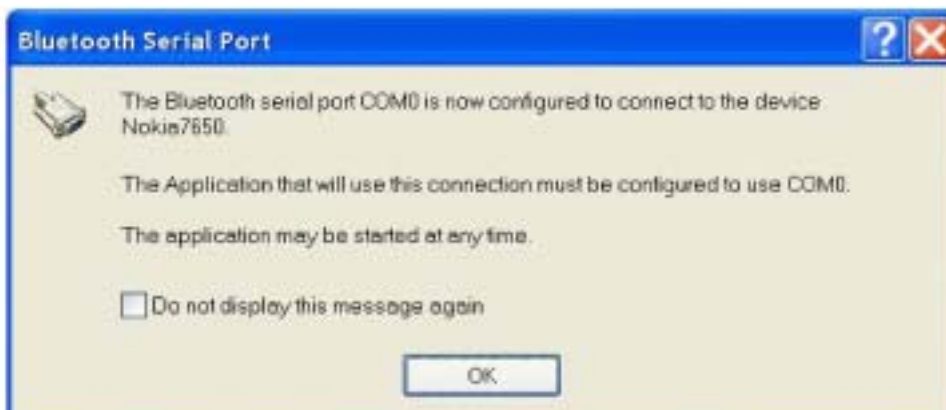


(5) Launch "PC Suite for Nokia 7650" from Start->Programs->PC Suite for Nokia 7650->PC Suite for Nokia 7650.

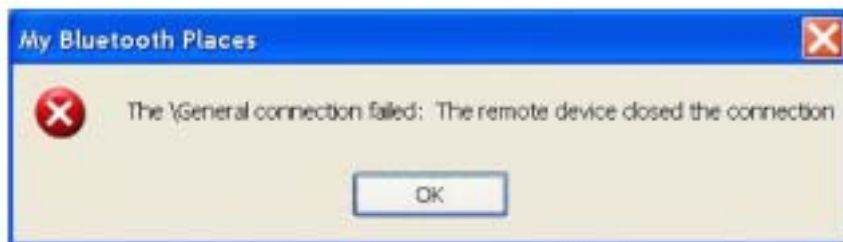
(6) Switch to the Bluetooth software, double click the "Bluetooth Serial Port On Nokia 7650" icon to establish serial connection with 7650.

(7) Key in the same passkey on both of your system and Nokia 7650 to complete the pairing process.

(8) Click "OK" when the following dialog box appears.



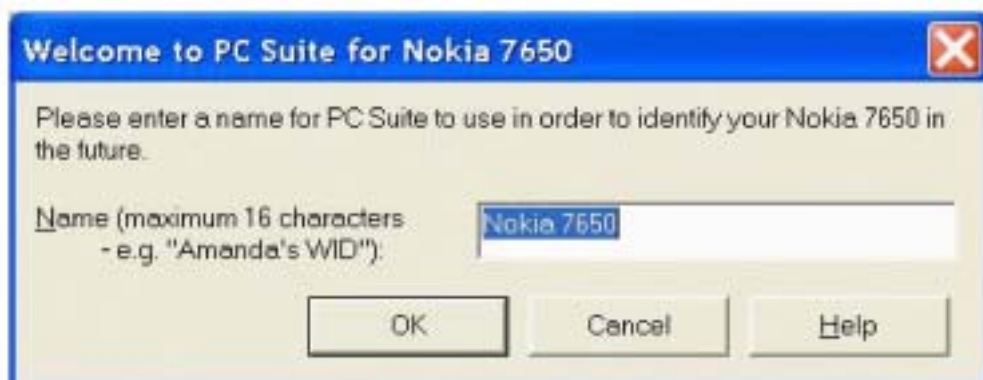
(9) Ignore the error message below and click "OK".



(10) "PC Suite for Nokia 7650" will now take over. Click "OK" when the dialog box below appears.



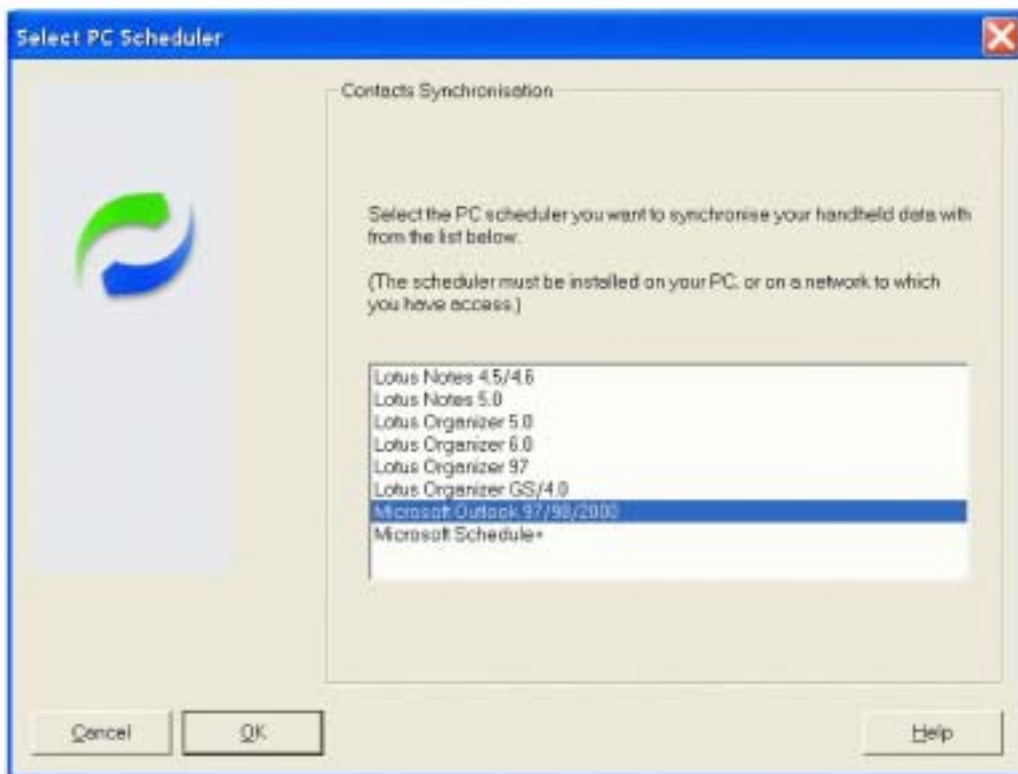
(11) Click "OK" when the dialog box below appears.



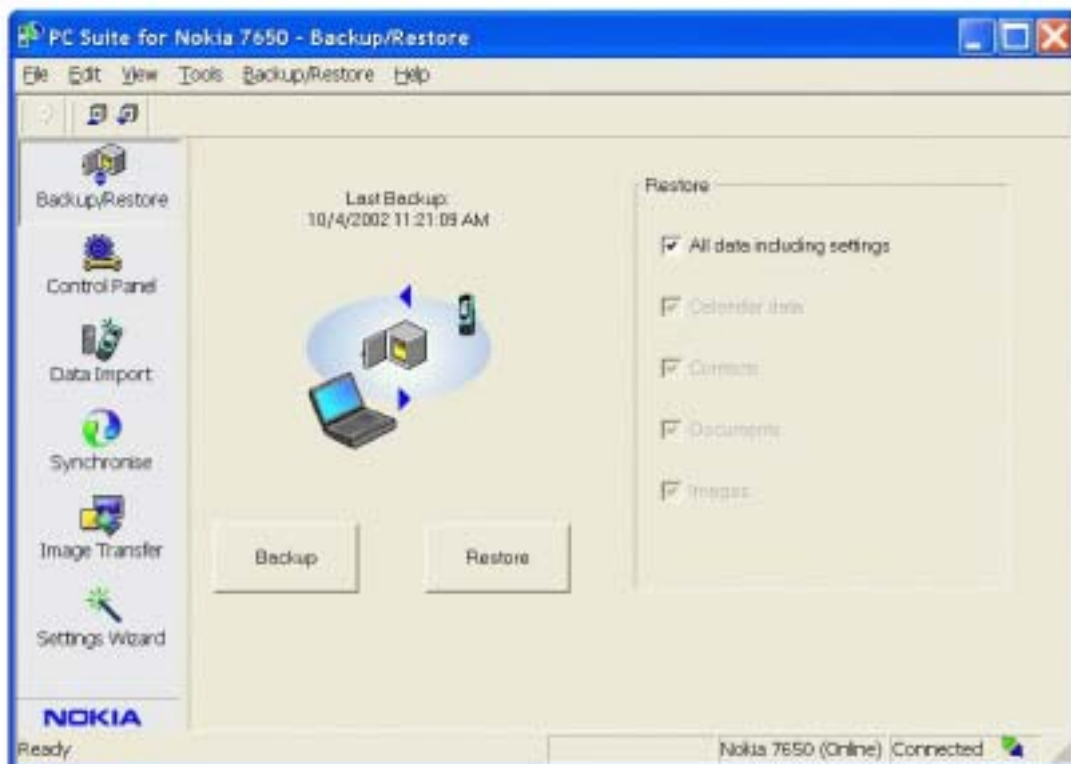
(12) Select the functions you wish to use with Nokia PC Suite.



(13) Select the program you wish to Synchronize with your system, in our case we use Microsoft Outlook 2000.



(14) Once connected, you should see the Connected icon on the right bottom corner.



(15) Now you are ready to configure, Synchronize your Nokia 7650 with your system.

(16) To disconnect, uncheck the COM port in "**Connection Properties**".

