

Bluetooth Printing to HP DeskJet 995c

HCRP Connection

- (1) Please update the HP DeskJet 995c firmware from HP's website, so that it is HCRP supported.
- (2) Click "Search for devices in range", HP DeskJet 995c will appear in the right pane.



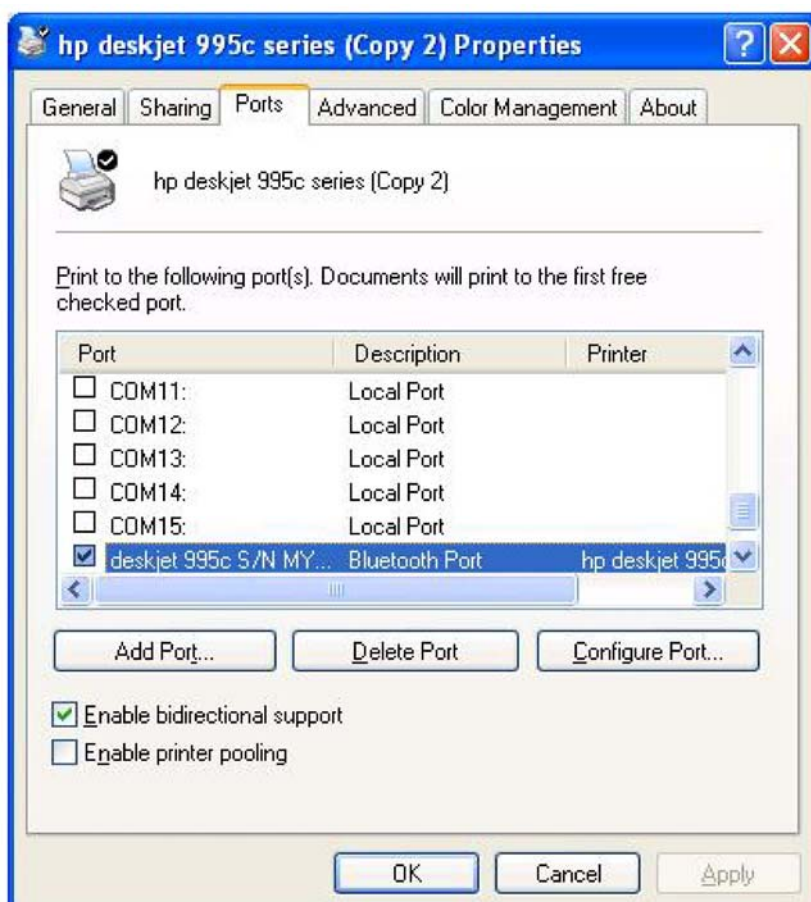
- (3) Click to select the HP Deskjet 995c icon. Click "Bluetooth" on the menu bar, and select "Discover Available Services".



- (4) Three services will appear.



(5) Double click the "Hardcopy Cable Replacement" icon, and select "Ports" tab. Make sure HP DeskJet 995c is connected to a Bluetooth Port.



(6) You should now be able to wirelessly print a file to your HP DeskJet 995c.

SPP Connection

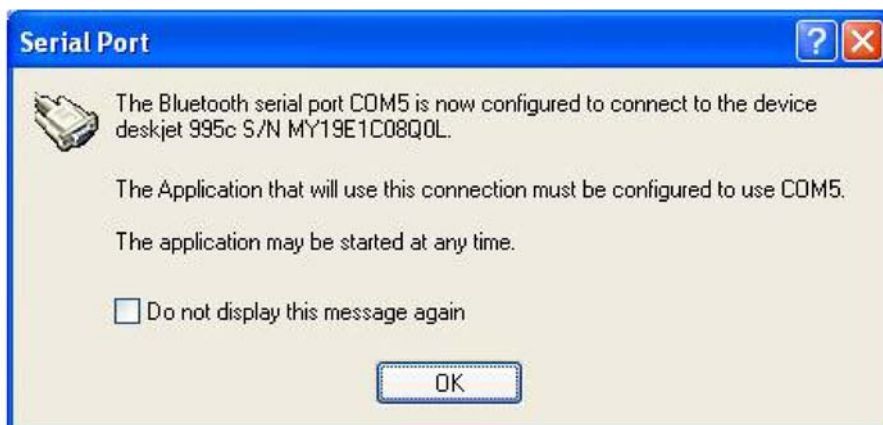
- (1) If you don't want to update your HP DeskJet 995c to become HCRP supported, you could also connect and print via SPP connection.
- (2) Right click the "Serial Port" icon, select "Connect to Bluetooth Serial Port".



- (3) A PIN Code Request dialog box will pop up, enter 0 as the default PIN Code for HP DeskJet 995c.



- (4) HP DeskJet 995c is now connected with your Bluetooth enabled system. Click "OK" to continue.



(5) The Serial Port icon will change to green, indicates that the Bluetooth connection is on.



(6) You should now be able to wirelessly print a file to your HP DeskJet 995c.