

NetWare Configuration

Overview

This document describes how to use the supplied BiAdmin utility to configure the Print Server in the Novell NetWare environment.

- Normally, the supplied Wizard can be used for this purpose, but using BiAdmin provides greater control. It also supports configuration for NetWare *Remote Printer* mode, which is not supported by the Wizard.
- Installing NetWare' *Client 32* is strongly recommended. Without *Client 32*, only limited changes can be made to the NetWare Server.

Getting Started

1. Ensure that you are logged into the NetWare server(s) you wish to use. You need to have ADMIN rights so you have permission to create printer objects and queues.
2. Start BiAdmin.
3. Select a Print Server from the list.
4. Select the NetWare icon.
5. From the resulting screen, shown below:
 - Disable any frame types which are not used on your Network.
 - Select the operating mode to match your NetWare server, and click *Configure*.

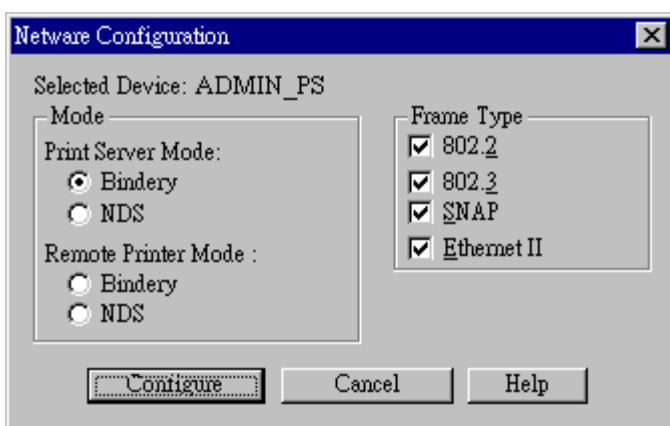


Figure 1: NetWare Mode

The screen you will see next depends on:

- Whether or not you have NetWare *Client 32* installed.
- The mode chosen above.

Use the Table of Contents to locate the section of this document, which is relevant to your situation.

Client 32: Print Server Mode – Bindery

If *Client 32* is installed, and **Print Server Mode - Bindery** is selected, the following screen will appear:

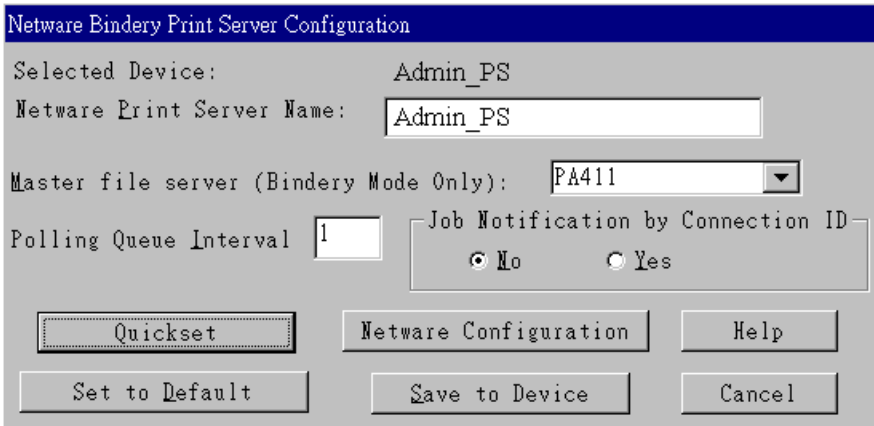


Figure 2: Bindery Print Server Mode

Data	
NetWare Print Server Name	The NetWare Print Server name must match the name of the Print Server. If you change the name here, this will also change the name of the Print Server.
Master File Server	Name of the Print Server's master file server (NetWare server). Select from the drop-down list.
Polling Queue Interval	Defines how often the Print Server will poll the queues to be serviced. The default is 1 second.
Job Notification by Connection ID	Set to <i>Yes</i> to receive a job notification at only the workstation where the print job originated, <i>No</i> to receive a job notification at all workstations that you have logged on.
Buttons	
Quickset	This option will configure the NetWare server using default values. See below for details.
NetWare Configuration	Use this to configure the NetWare server. See below for details. See the following section for details.
Help	View context-sensitive help.
Set to Default	Replace the on-screen values with the default values. These are NOT saved until you click <i>Save to Device</i> . (No changes are made to the NetWare server.)
Save to Device	Save any changes you have made to the Print Server.
Cancel	Ignore any changes made since the last <i>Save</i> operation; close the window.

Quickset

The **Quickset** button on the previous screen will configure the NetWare server using default values derived from the default name, as shown on the following example:

Bindery Quickset

Print Server : SCC42230

P1
Printer : SCC42230_BIN_P1
Queue : SCC42230_BIN_Q1

P2
Printer : SCC42230_BIN_P2
Queue : SCC42230_BIN_Q2

P3
Printer : SCC42230_BIN_P3
Queue : SCC42230_BIN_Q3

SP
Printer : N/A
Queue : N/A

Setup Cancel Help

Figure 3: Bindery Quickset

This screen displays the name the selected Print Server, and the following information for each port:

Printer – the NetWare printer object will be created on the current server.

Queue – the NetWare queue associated with the Printer Object. This queue which will be serviced by the current Print Server, with print jobs being sent to the port shown.

Change the default values if you wish for, then click *Setup* to create these objects on the NetWare server.

NetWare Configuration Button (Bindery)

Clicking the **NetWare Configuration** button will reveal one of the following screens:

If you have multiple File Servers:

You will see this screen:

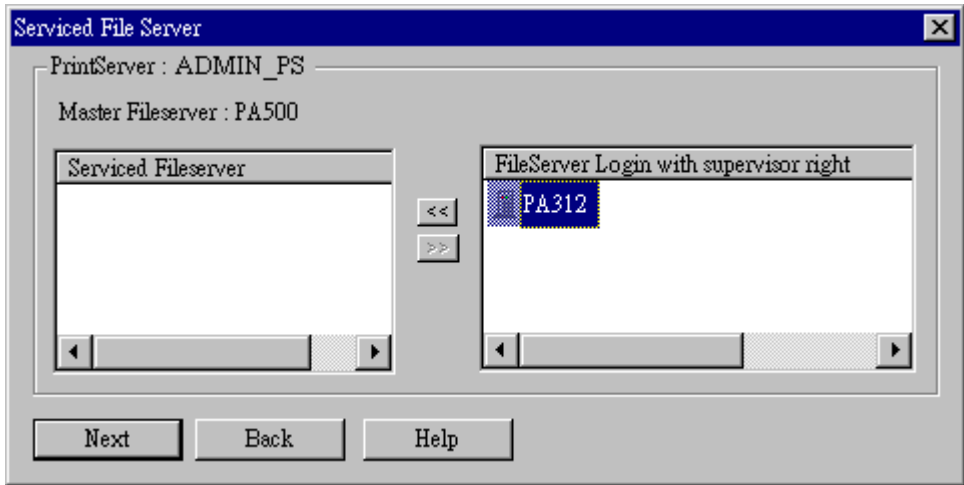


Figure 4: Assigning Additional File Servers

- This screen allows you to set the Print Server to service additional file servers. Normally, the Print Server will service only the *Master File Server*.
- The right column lists any available servers. Note that to be available, you must be logged into the Server with Supervisor rights.
- Use the “<<” and “>>” buttons to move file servers to and from the *Serviced Fileserver* list on the left.
- When completed, click *Next*. This will create a NetWare Print Server object on the *Serviced Fileserver* if it does not yet exist. The NetWare Print Server will have the same name as the NetWare Print Server on the *Master File Server*.
- After clicking *Next*, you will see the screen below.

If you have a single File Server:

Clicking the *NetWare Configuration* button will reveal the following screen:



Figure 5: Configure NetWare Server (Bindery PS mode)

- The NetWare Print Server name is shown at the top of the screen. If more than 1 NetWare server is used, this name is the same on every NetWare server.
- The options available are :

File Server This drop-down list will be operational only if you have assigned more than 1 file server to be serviced by the Print Server.

Printer Create Printer Objects, assign Print Queues, and assign users to Print Queues

(Required). See the following section for details.

- | | |
|-----------------|--|
| Operator | Assign Operators to the NetWare Print Server object. (Optional)
These operators will then have permission to manage the NetWare Print Server object. The screen is identical to <i>Figure 9: Assign Operator to Queue (Bindery)</i> . |
| User | Assign Users to the NetWare Print Server object. (Optional)
These users will then be able to view the status of the NetWare Print Server object. The screen is identical to <i>Figure 8: Assign Users to Queue (Bindery)</i> . |
| Password | Change the login password used by the Print Server when it connects to the NetWare server. By default, there is no password. See <i>Password</i> for details. |

"Printer" Button

1. After selecting the **Printer** button on the screen above, the NetWare printer objects (1 for each port on the Print Server) will be created if they do not yet exist.
2. The next screen (shown below) allows you to select the desired port on the Print Server. This also selects the printer object. You can NOT change the printer object associated with the port.

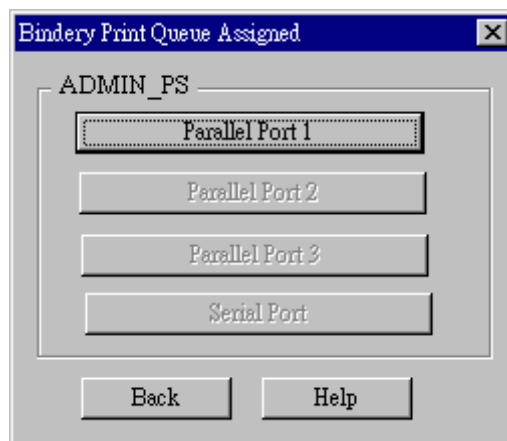


Figure 6: Select Printer Port (Bindery)

3. After selecting the desired port, you will see a screen like the following example, which allows you to assign printer queues to the printer object.

Assigning Printer Queues (Required)

This screen will be displayed when a port button is clicked on the previous screen.

Use this screen to assign queue(s) to the printer object associated with the selected port.

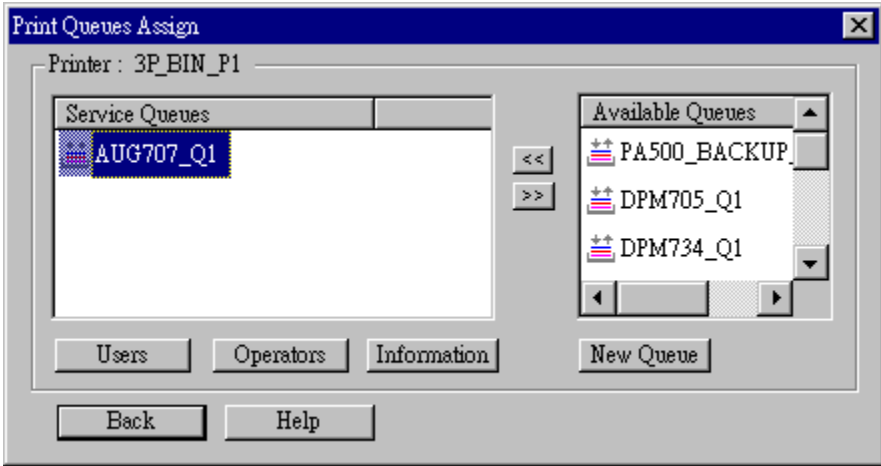


Figure 7: Assign Queues (Bindery)

This screen displays the name of the NetWare Printer on the top of the screen.

Queues serviced by this NetWare printer are listed on the left and other queues on the right.

- Create a new queue by clicking **New Queue**. Enter the name in the dialog.
- Assign an existing queue by selecting a queue on the right, and clicking the “<<” button.
- Stop servicing a queue by selecting it from the list on the left, and clicking the “>>” button.
- When a Queue on the left is selected, the *Users*, *Operators*, and *Information* buttons become available.

To Assign Users to Queues (Required)

Select the queue, then click **Users** on the screen above to see the following screen. The current queue name is shown on the top of the screen.

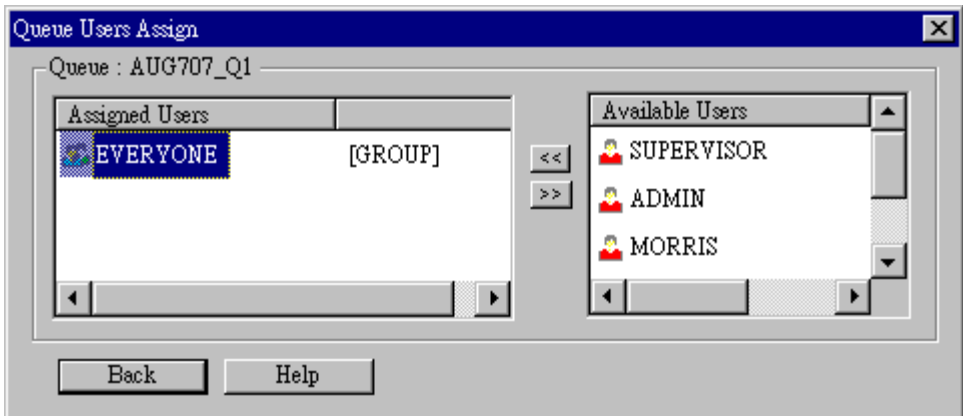


Figure 8: Assign Users to Queue (Bindery)

- Assign a user or group by selecting them on the right, and clicking the “<<” button.
- Remove an assignment by selecting the user or group from the list on the left, and clicking the “>>” button.

To assign operators to Queues (Optional)

Select **Operators** from *Figure 7: Assign Queues* to view the following screen.

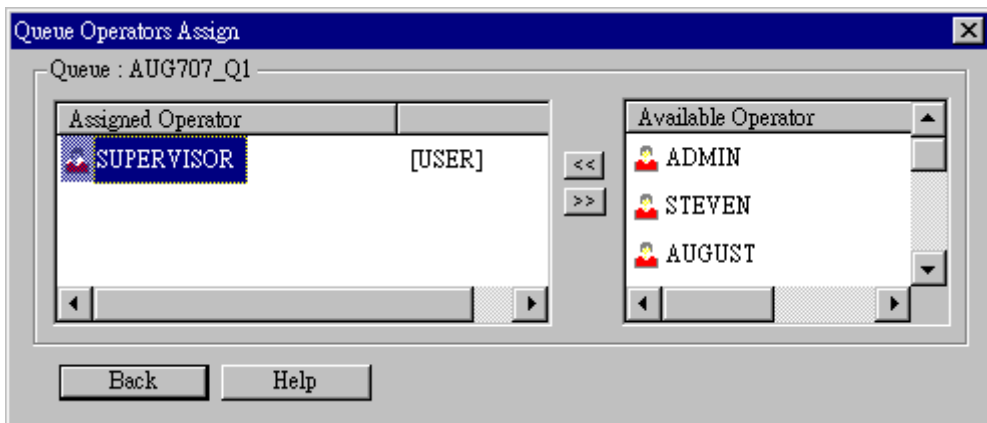


Figure 9: Assign Operator to Queue (Bindery)

- Assign an operator by selecting them on the right, and clicking the “<<” button.
- Remove an assignment by selecting the operator from the list on the left, and clicking the “>>” button.

Password

Clicking the **Password** button on the screen shown in Figure 5: Configure NetWare Server (Bindery PS mode) allows you to simultaneously change the NetWare password for the *Master File Server*, and the NetWare login password stored in the Print Server. (The Print Server must be able to login to the NetWare server.)

You will see a screen like the example below:

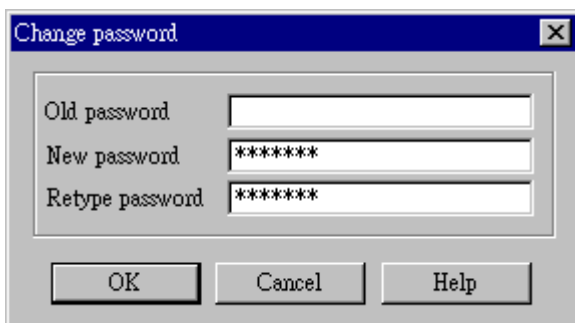


Figure 10: NetWare Password (Bindery PS Mode)

- Enter the old (NetWare) password, and enter the new password in both fields provided.
- If the printer object has been created by BiAdmin, the *Old Password* will be blank. In that case, leave this field empty.
- The new password will be saved both on the NetWare server and the Print Server.

Client 32: Print Server Mode – NDS

If *Client 32* is installed, and **Print Server Mode - NDS** is selected, the following screen will appear:

Netware NDS Print Server Configuration

Selected Device: ADMIN

Netware Print Server Name:

NDS Tree Name:

Print Server NDS Context:

Polling Queue Interval (1-255): Job Notification by Connection ID: ☒ No ☐ Yes

Figure 11: NDS Print Server Mode

Data	
NetWare Print Server Name	The NetWare Print Server name must match the name of the Print Server. If you change the name here, this will also change the name of the Print Server.
NDS Tree Name	Select the File Server's NDS tree name. (root name)
Print Server NDS Context	Select <i>Browse</i> to view the NDS tree and select the appropriate Context.
Polling Queue Interval	Defines how often the Print Server will poll the queues to be serviced.
Job Notification by Connection ID	Set to <i>Yes</i> to receive a job notification at only the workstation where the print job originated, <i>No</i> to receive a job notification at all workstations that you have logged on.
Buttons	
NetWare Configuration	Use this to configure the NetWare server. See the following section for details.
Quickset	This option will configure the NetWare server using default values. See below for details.
Help	View context-sensitive help.
Set to Default	Replace the on-screen values with the default values. These are NOT saved until you click <i>Save to Device</i> . (No changes are made to the NetWare server.)
Save to Device	Save any changes you have made to the Print Server.
Cancel	Ignore any changes made since the last <i>Save</i> operation; close the window.

Quickset

The **Quickset** button on the screen above will configure the NetWare server with default values based on the default name of the Print Server.

You will see a screen like the following example:

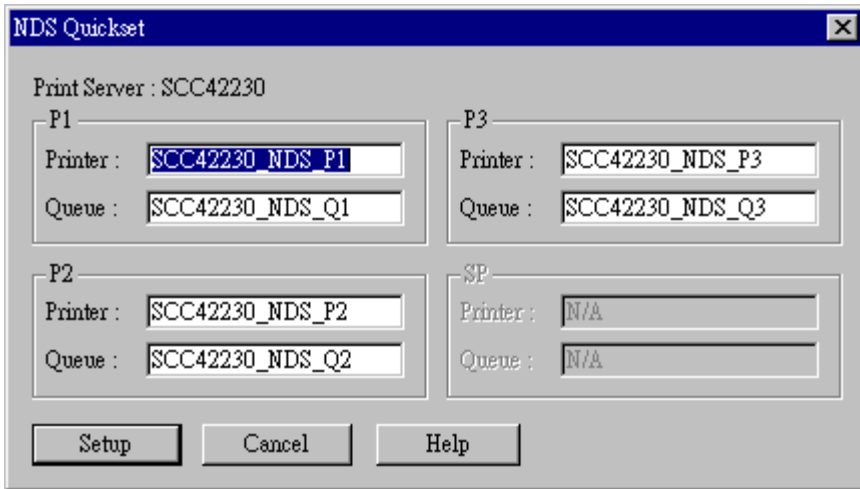


Figure 12: NDS Quickset

Change the default values if you wish for, then click *Setup* to create these objects on the NetWare server.

The configuration data will be saved to the NetWare server and the Print Server.

NetWare Configuration Button (NDS)

Clicking this button will reveal the following screen:

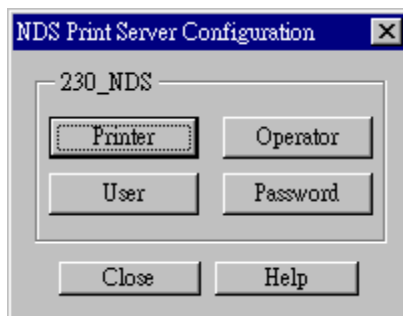


Figure 13: NetWare Configuration (NDS PS mode)

The NetWare Print Server name is shown at the top of the screen.

The options available are:

- **Printer** – Create Printer Objects, then assign Printer Queues and users to Queues (Required). See the following section for details.
- **Operator** – Assign Operators to the NetWare Print Server object. (Optional)
These operators will then have permission to manage the NetWare Print Server object. The screen is identical to *Figure 17: Assign Operators to Queue (NDS PS mode)*.
Note: Operator assignment has no effect on the Print Server. This facility is provided only for the convenience of NetWare administrators.
- **User** – Assign Users to the NetWare Print Server object. (Optional)
These users will then be able to view the status of the NetWare Print Server object. This is optional; printing requires only that users be assigned to queues, not to the NetWare Print Server. The screen for assigning users to a NetWare Print Server is identical to *Figure 16: Assign Users to Queue (NDS PS mode)*.
- **Password** – Change the login password used by the Print Server when it connects to the NetWare server. By default, there is no password. See *Password (NDS)* for details.

Printer button

1. After selecting **Printer** above, the NetWare printer objects (1 for each port on the Print Server) will be created if they do not yet exist.
2. The next screen (shown below) allows you to select the desired port on the Print Server. This also selects the printer object. You can NOT change the printer object associated with the port.



Figure 14: Select Printer Port (NDS)

3. After clicking on the button for the desired port, you will see a screen like the following example. Use this screen to assign queue(s) to the printer object associated with the selected port.

Assigning Printer Queues (Required)

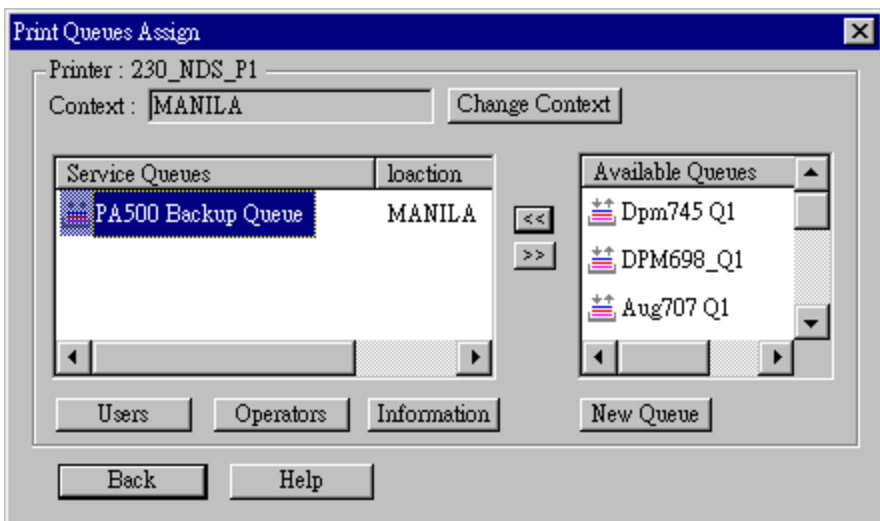


Figure 15: Assign Queues (NDS PS mode)

This screen displays the current NetWare Printer Object at the top of the screen.

Queues serviced by the current Printer Object are listed on the left side, and other queues (in the current context) on the right side.

- Use the *Change Context* button to change the current context. The *Available Queues* list on the right will then change to show the queues available in that context.

- Create a new queue by clicking **New Queue**. Enter the new name, and select the desired context.
- Assign an existing queue by selecting a queue on the right, and clicking the “<<” button.
- Stop servicing a queue by selecting it from the list on the left, and clicking the “>>” button.
- When a Queue on the left is selected, the *Users*, *Operators*, and *Information* buttons become available.

To Assign Users to Queues (Required)

Select on queue on the screen above, then click **Users** to see the following screen:

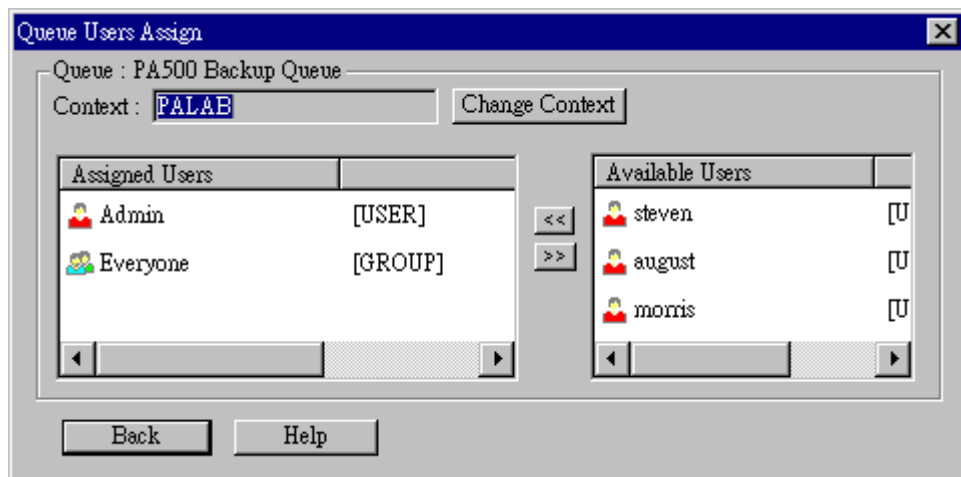


Figure 16: Assign Users to Queue (NDS PS mode)

The screen allows you to assign users to the current queue. The current queue is displayed on the top of the screen.

- Use the **Change Context** button to change the current context. The *Available Users* list on the right will then change to show the users available in that context.
- Assign a user or group by selecting them on the right, and clicking the “<<” button.
- Remove an assignment by selecting the user or group from the list on the left, and clicking the “>>” button.

Note: If you select *User* from *Figure 13: NetWare Configuration (NDS PS mode)*, you will see a similar screen, which allows you to assign users to the Printer Object, rather than the Printer Queue.

To assign operators to the Print Queue (Optional)

To assign Operators to the selected queue, select **Operators** from *Figure 15: Assign Queues (NDS PS mode)*. This step is optional; operator assignment has no effect on operation of the Print Server.

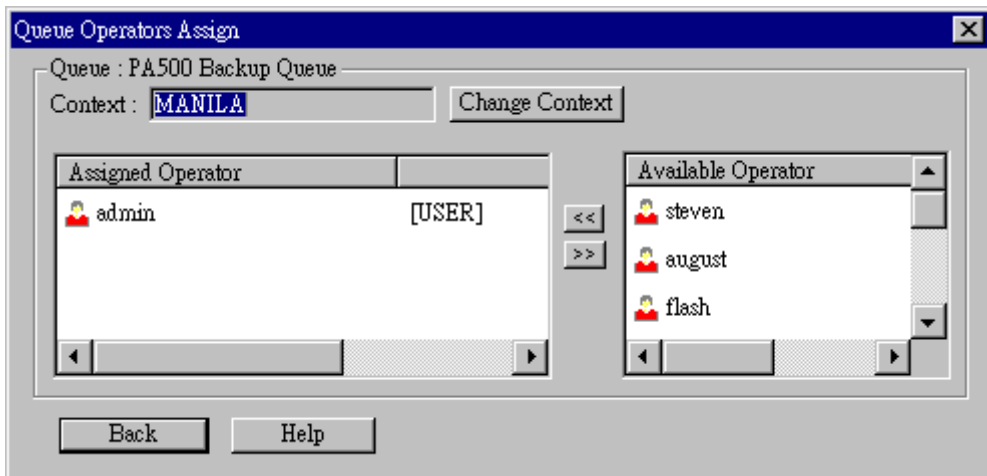


Figure 17: Assign Operators to Queue (NDS PS mode)

The current Queue and Context are displayed at the top of the screen.

- Use the *Change Context* button to change the current context. The *Available Operators* list on the right will then change to show the queues available in that context.
- Assign an operator by selecting them on the right, and clicking the “<<” button.
- Remove an assignment by selecting the operator from the list on the left, and clicking the “>>” button.

Note: If you select *Operator* from *Figure 13: NetWare Configuration (NDS PS mode)*, you will see a similar screen, which allows you to assign users to the Printer Object, rather than the Printer Queue.

Password (NDS)

Clicking the **Password** button on the screen shown in *Figure 13: NetWare Configuration (NDS PS mode)* allows you to simultaneously change the NetWare password for the *Master File Server*, and the NetWare login password stored in the Print Server. (The Print Server must be able to login to the NetWare server.)

You will see a screen like the example below:

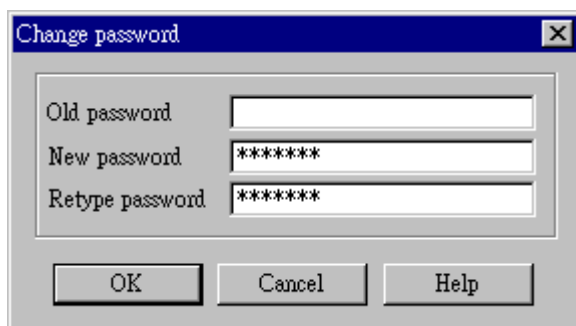


Figure 18: NetWare Password (NDS PS Mode)

- Enter the old (NetWare) password, and enter the new password in both fields provided.
- If the printer object has been created by BiAdmin, the *Old Password* will be blank. In that case, leave this field empty.
- The new password will be saved both on the NetWare server and the Print Server.

Client 32: Remote Printer Mode – Bindery

If *Client 32* is installed, and **Remote Printer Mode - Bindery** is selected, the following screen will appear:

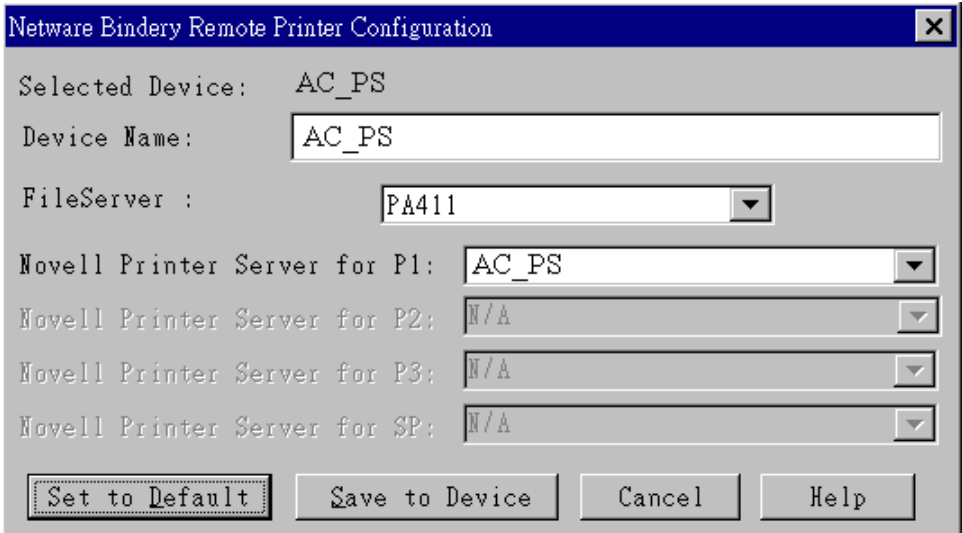


Figure 19: Bindery Remote Printer

Data	
Device Name	Change the name of the selected Print Server if you wish. (This field is also on the <i>Configuration-System</i> menu.)
File Server	Select the NetWare File Server to service each port.
Novell Printer Server for P1 (Parallel port 1)	Select the NetWare print server to service the Print Server's parallel port 1.
Novell Printer Server for P2, P3 & SP (if exist)	Select the NetWare print server to service the Print Server's parallel port 2 (P2), parallel port 3 (P3), or Serial port (SP), if fitted.
Buttons	
Set to Default	Replace the on-screen values with the default values. These are NOT saved until you click <i>Save to Device</i> . (No changes are made to the NetWare server.)
Save to Device	Save any changes you have made to the Print Server.
Cancel	Ignore any changes made since the last <i>Save</i> operation; close the window.
Help	View context-sensitive help.

Client 32: Remote Printer Mode – NDS

If *Client 32* is installed, and **Remote Printer Mode - NDS** is selected, the following screen will appear:

Netware NDS Remote Printer Configuration

Tree : PALAB

Current Context : PALAB Browse

Selected Device: Admin_PS

Device Name: Admin_PS

Novell Printer Server for P1: NeptunePS01

Novell Printer Server for P2: NeptunePS01

Novell Printer Server for P3: Tj31

Novell Printer Server for SP: N/A

Set to Default Save to Device Cancel Help

Figure 20: NDS Remote Printer

Data	
Device Name	Change the name of the selected Print Server if you wish. (This field is also on the <i>Configuration-System</i> menu.)
NDS Tree Name	Select the NDS tree.
Current Context	Select <i>Browse</i> to view the NDS tree and select the appropriate Context.
Novell Printer Server for P1 (Parallel port 1)	Select the NetWare print server to service the Print Server's parallel port 1.
Novell Printer Server for P2, P3 & SP (if exist)	Select the NetWare print server to service the Print Server's parallel port 2 (P2), parallel port 3 (P3), or Serial port (SP), if fitted.
Buttons	
Set to Default	Replace the on-screen values with the default values. These are NOT saved until you click <i>Save to Device</i> . (No changes are made to the NetWare server.)
Save to Device	Save any changes you have made to the Print Server.
Cancel	Ignore any changes made since the last <i>Save</i> operation; close the window.
Help	View context-sensitive help.

No Client 32: Print Server Mode

If *Client 32* is NOT installed, and either **Print Server Mode - Bindery** or **Print Server Mode - NDS** is selected, the following screen will appear:

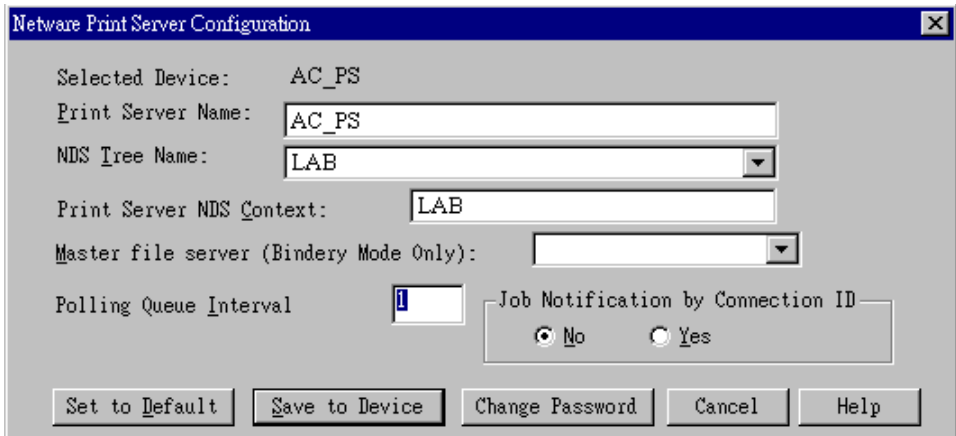


Figure 21: Print Server Mode

Data

Selected Device	The name of the current Print Server.
Print Server Name	For convenience, you can change the name of the Print Server on this screen, by entering a new name in this field. This becomes the NetWare log-in name for this device.
NDS Tree Name (NDS Mode only)	The File Server's NDS tree name (root name). Select from the drop-down list.
Print Server NDS Context (NDS Mode only)	Path to the NDS Context. This does not include the Context itself, and each OU should be separated by a period. e.g. department . company
Master File Server (Bindery Mode only)	Name of the Print Server's master file server (NetWare server). Select from the drop-down list.
Polling Queue Interval	Defines how often the Print Server will poll the queues to be serviced.
Job Notification by Connection ID	Set to <i>Yes</i> to receive a job notification at only the workstation where the print job originated, <i>No</i> to receive a job notification at all workstations that you have logged on.
NetWare Password	The password on the NetWare Print Server. The device needs this password to connect to the NetWare server.
Polling Queue Interval	Defines how often the Print Server will poll the queues to be serviced.
Job Notification by Connection ID	Set to <i>Yes</i> to receive a job notification at only the workstation where the print job originated, <i>No</i> to receive a job notification at all workstations that you have logged on.

Buttons

Set to Default	Restore default values, clearing all NetWare server information.
Save to Device	Save any changes you have made to the Print Server.
Change Password	Enter the password required to connect to the NetWare Server into the resulting dialog box. The Print Server will use this password to log-in to the NetWare Server.
Cancel	Cancel any changes not already saved, then close the screen.
Help	View the help file.

No Client 32: Remote Printer Mode

If *Client 32* is NOT installed, and either *Remote Printer Mode - Bindery* or *Remote Printer Mode - NDS* is selected, the following screen will appear:

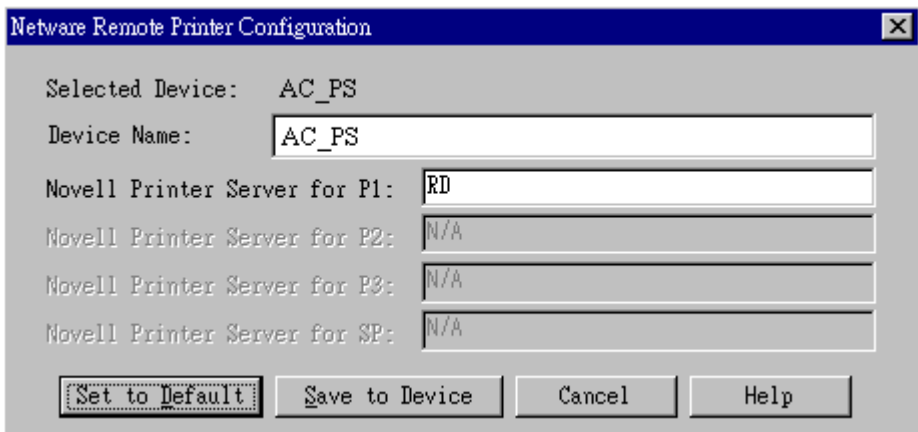


Figure 22: Remote Printer Mode

Data

Selected Device	The name of the current Print Server.
Print Server Name	For convenience, you can change the name of the Print Server on this screen, by entering a new name in this field.
Novell Printer Server for P1	NetWare print server to service the Print Server's parallel port 1.
Novell Printer Server for P2, P3 & SP (if exist)	NetWare print server to service the Print Server's parallel port 2 (P2), parallel port 3 (P3), or Serial port (SP), if fitted.

Buttons

Set to Default	Restore default values, clearing all NetWare server information.
-----------------------	--

Save to Device	Save any changes you have made to the Print Server.
Cancel	Cancel any changes not already saved, then close the screen.
Help	View the help file.